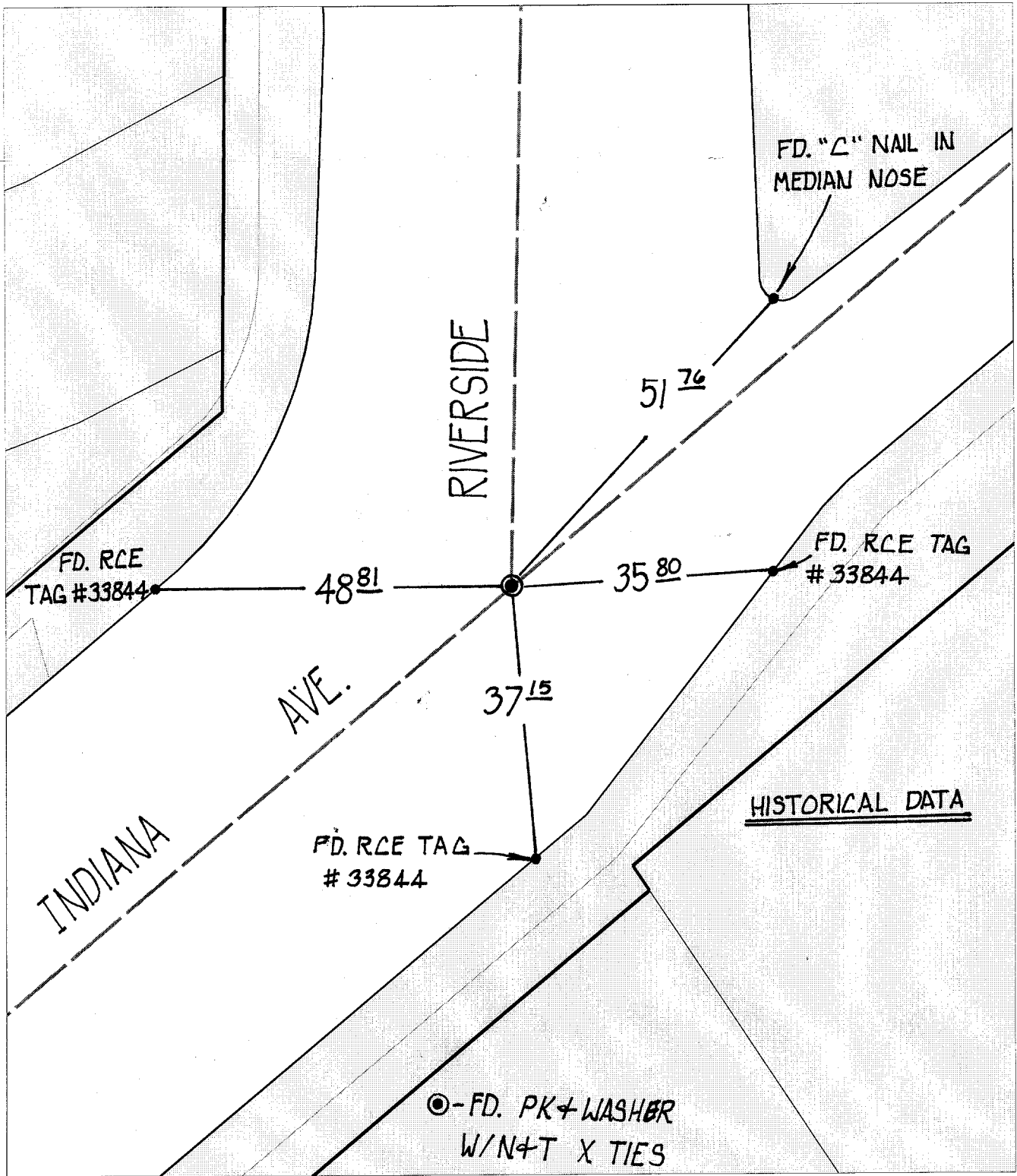


SWING TIES



Street:
9933

TIF

INDIANA AVE.

OFFICIAL USE ONLY

X-Street: SLY OF ARLINGTON AVE.

- ✕ FD. Ramset Nail on T/C
- FD. "C" Nail on T/C

- FD. LD. & TK. on T/C
- Set LD. & TK. on T/C

Scale: 1" = 20'
 Date: 08/05/99
 Drawn by: L. Harris
 W.O.:
 F.B.:

OFFICIAL TIE PLAT CITY OF RIVERSIDE



These ties are for the purpose of perpetuating the found monumentation. No claim is made as to the relationship of the points or lines shown hereon to true boundary locations.

Sheet 1 of 1
 File No.: