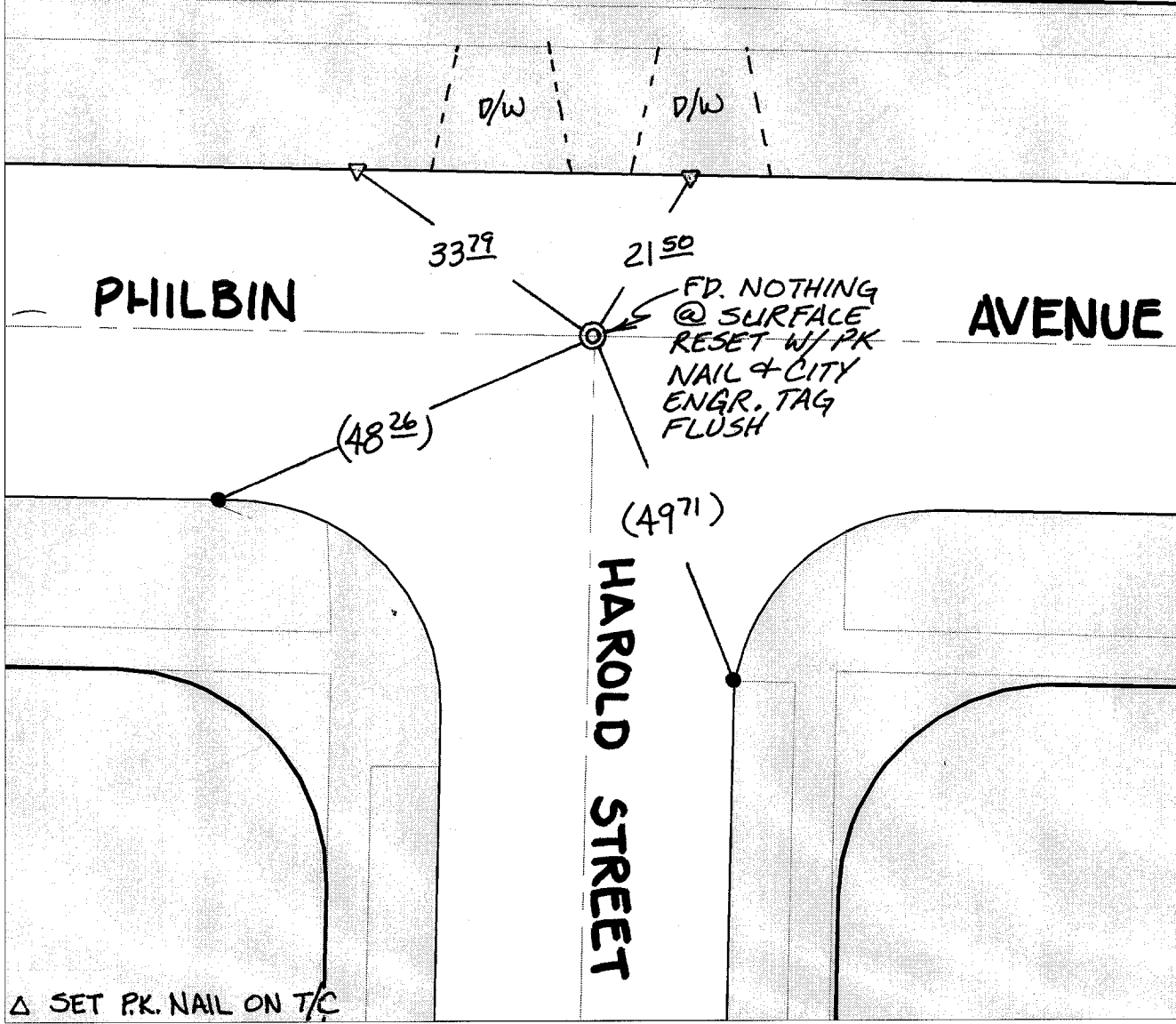


# SWING TIES

<b>HISTORICAL DATA</b> -CITY TIE SHT. DATED 6-7-96		(-) - REC. DIST. PER. CITY TIE SHT. DATED 6-7-96
---	--	---



△ SET P.K. NAIL ON T/C

- × FD. Ramset Nail on T/C      ● FD. LD. & TK. on T/C
- FD. "C" Nail on T/C      ○ Set LD. & TK. on T/C

P.K. and City Engineer tag to be set @ surface after street construction is complete. (If possible)

Street: **C 9943** PHILBIN AVENUE  
 TIF  
 X-Street: HAROLD STREET  
 OFFICIAL USE ONLY

Scale: 1" = 20'  
 Date: 10/22/01  
 Drawn by: survey  
 F.B.:  
 TR-Sec: T3SR6W-1

## OFFICIAL TIE PLAT

### CITY OF RIVERSIDE

*These ties are for the purpose of perpetuating the found monumentation. No claim is made as to the relationship of the points or lines shown hereon to true boundary locations.*

Sheet 1 of 1  
 Cadme MB: 50-8