

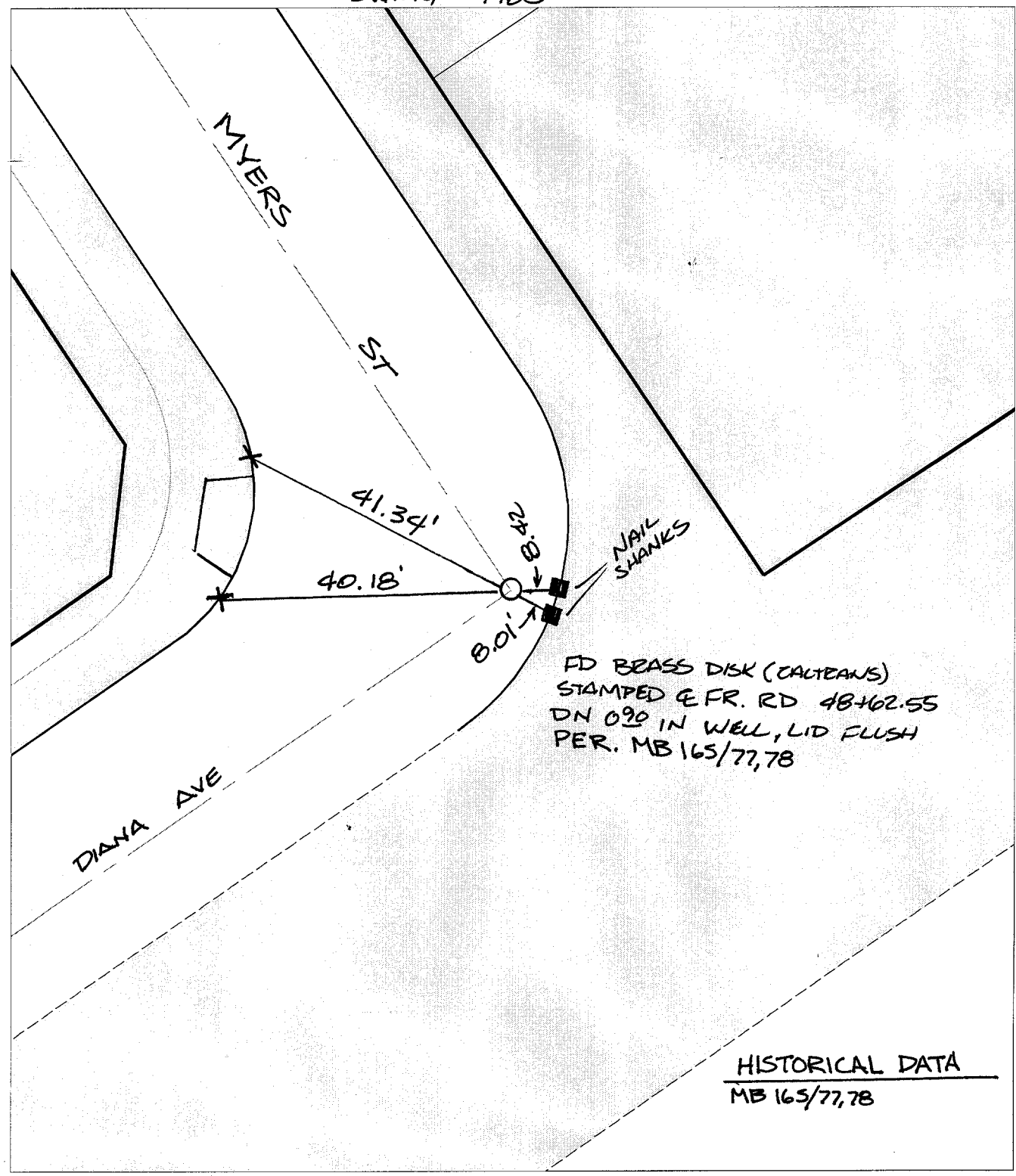
Street:
C 9957

MYERS STREET

OFFICIAL USE ONLY

X-Street:
DIANA AVENUE

SWING TIES



FD BRASS DISK (CALTRANS)
 STAMPED E.F.R. RD 48+62.55
 DN 090 IN WELL, LID FLUSH
 PER. MB 165/77,78

HISTORICAL DATA
 MB 165/77,78

- ✕ FD. Ramset Nail on T/C
- FD. LD. & TK. on T/C
- FD. "C" Nail on T/C
- Set LD. & TK. on T/C

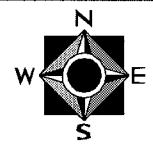
P.K. and City Engineer tag to be set @
 surface after street construction is
 complete. (If possible)

Scale: 1" = 20'
 Date: 10/19/01
 Drawn by: SURVEY
 F.B.:
 TR-Sec: T3SR5W-18

OFFICIAL TIE PLAT

CITY OF RIVERSIDE

*These ties are for the purpose of perpetuating the found
 monumentation. No claim is made as to the relationship of
 the points or lines shown hereon to true boundary locations.*



Sheet 1 of 1
 Cadme MB: 81-1