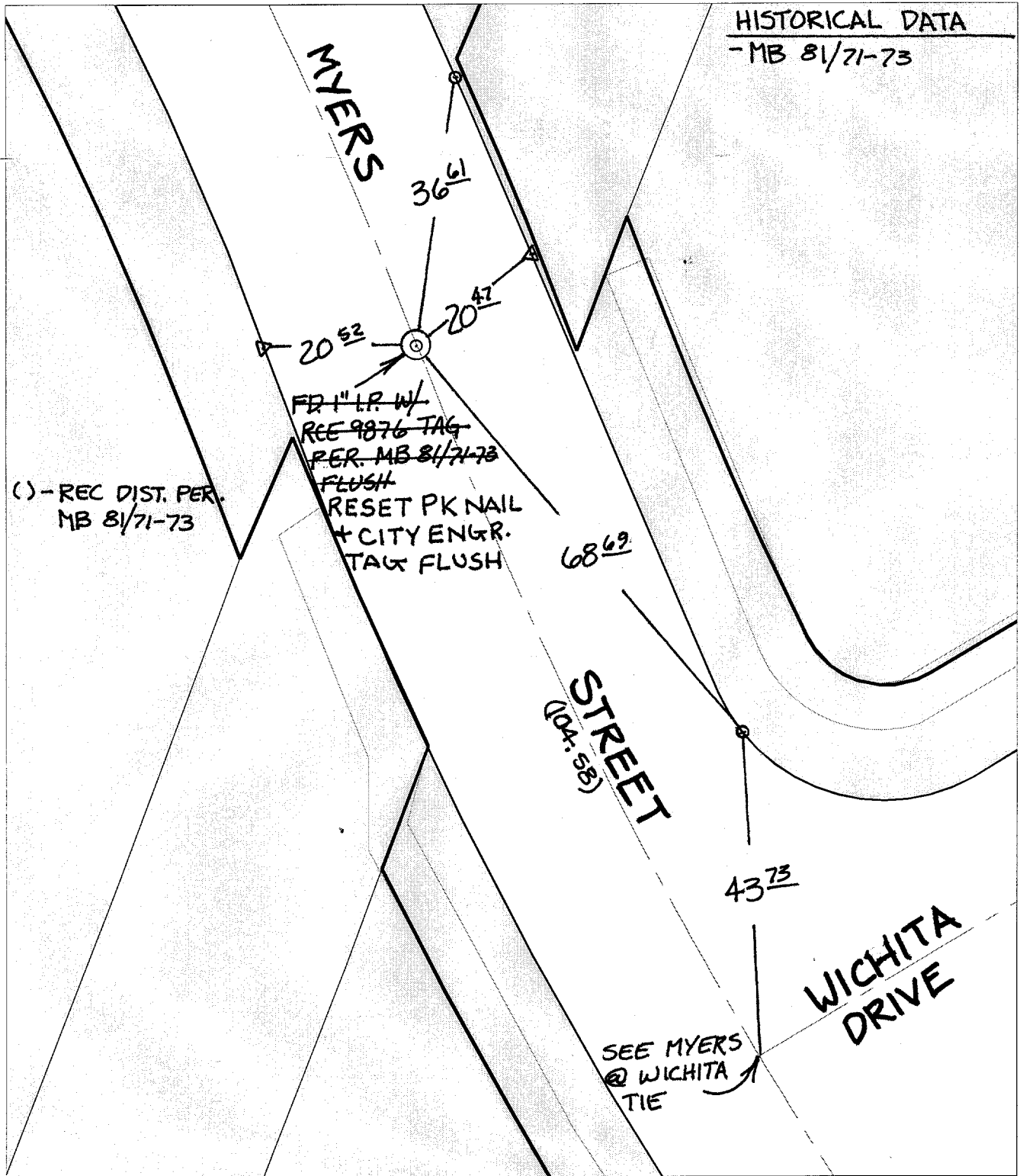


SWING TIES



HISTORICAL DATA
- MB 81/71-73

() - REC DIST. PER.
MB 81/71-73

FD 1" L.R. W/
RCE 9876 TAG
PER. MB 81/71-73
FLUSH
RESET PK NAIL
+ CITY ENGR.
TAG FLUSH

STREET
(104-58)

WICHITA
DRIVE

SEE MYERS
@ WICHITA
TIE

Street: C 9977 TIF MYERS STREET
X-Street: P.R.C. N. OF WICHITA DR.
OFFICIAL USE ONLY

- ✕ FD. Ramset Nail on T/C ● FD. LD. & TK. on T/C
- FD. "C" Nail on T/C ○ Set LD. & TK. on T/C

P.K. and City Engineer tag to be set @
surface after street construction is
complete. (If possible)

Scale: 1" = 20'
Date: 10/19/01
Drawn by: SURVEY
F.B.:
TR-Sec: T3SR5W-18

OFFICIAL TIE PLAT CITY OF RIVERSIDE

*These ties are for the purpose of perpetuating the found
monumentation. No claim is made as to the relationship of
the points or lines shown hereon to true boundary locations.*



Sheet 1 of 1
Cadme MB: 81-3