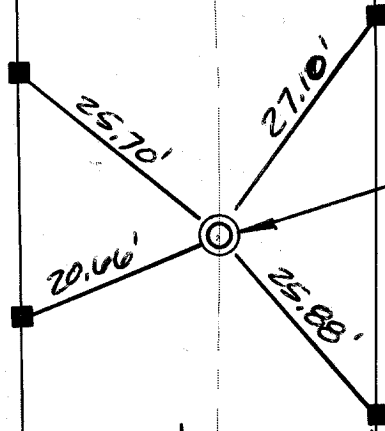


SWING TIES

HISTORICAL DATA
JF DAVIDSON TIES
FOR TR 3439

VIA SOTELO
R=500'



FD 3/4" I.P. NO TAG
FLUSH RESET w/P.K.
NAIL & CITY ENGR. TAG
FLUSH

TO COUNTRY CLUB

Street:
C10017

TIF

VIA SOTELO B.C.

OFFICIAL USE ONLY

X-Street: N'LY OF COUNTRY CLUB

- ✕ FD. Ramset Nail on T/C
- FD. LD. & TK. on T/C
- FD. "C" Nail on T/C
- Set LD. & TK. on T/C

P.K. and City Engineer tag to be set @
surface after street construction is
complete. (If possible)

Scale: 1" = 20'

Date: 02/13/02

Drawn by: survey

F.B.:

TR-Sec: T2SR4W-31

OFFICIAL TIE PLAT

CITY OF RIVERSIDE

*These ties are for the purpose of perpetuating the found
monumentation. No claim is made as to the relationship of
the points or lines shown hereon to true boundary locations.*



Sheet 1 of 1

Cadme MB: 56-4