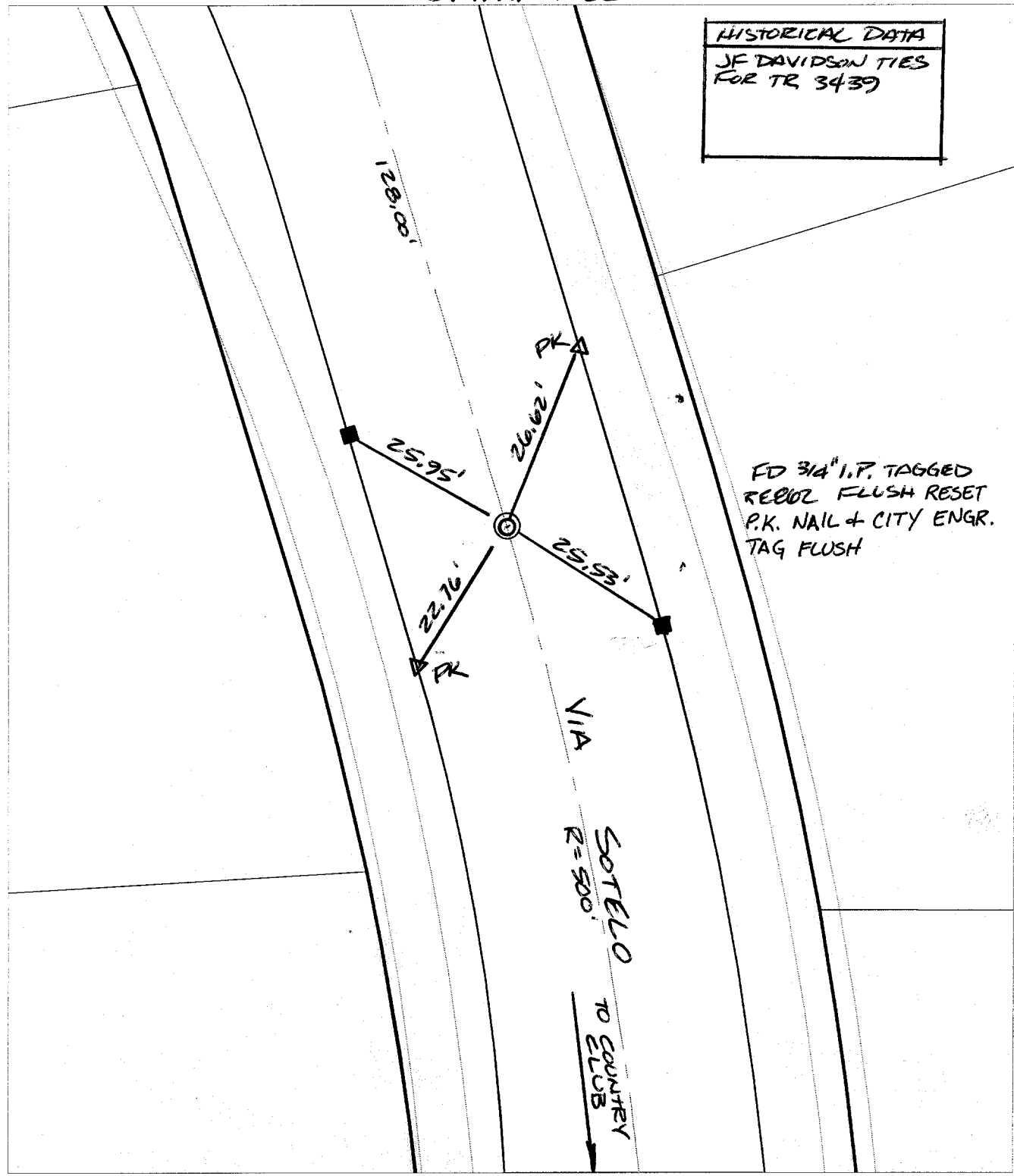


SWING TIES

HISTORICAL DATA  
JF DAVIDSON TIES  
FOR TR 3439



FD 3/4" I.P. TAGGED  
REBOL FLUSH RESET  
P.K. NAIL + CITY ENGR.  
TAG FLUSH

- ✕ FD. Ramset Nail on T/C
- FD. LD. & TK. on T/C
- FD. "C" Nail on T/C
- Set LD. & TK. on T/C

P.K. and City Engineer tag to be set @ surface after street construction is complete. (If possible)

Street:  
00019

VIA SOTELLO E.C.  
TIF

OFFICIAL USE ONLY

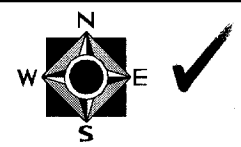
X-Street: N'LY OF COUNTRY CLUB

Scale: 1" = 20'  
 Date: 02/13/02  
 Drawn by: survey  
 F.B.:  
 TR-Sec: T2SR4W-31

## OFFICIAL TIE PLAT

### CITY OF RIVERSIDE

*These ties are for the purpose of perpetuating the found monumentation. No claim is made as to the relationship of the points or lines shown hereon to true boundary locations.*



Sheet 1 of 1  
 Cadme MB: 56-4