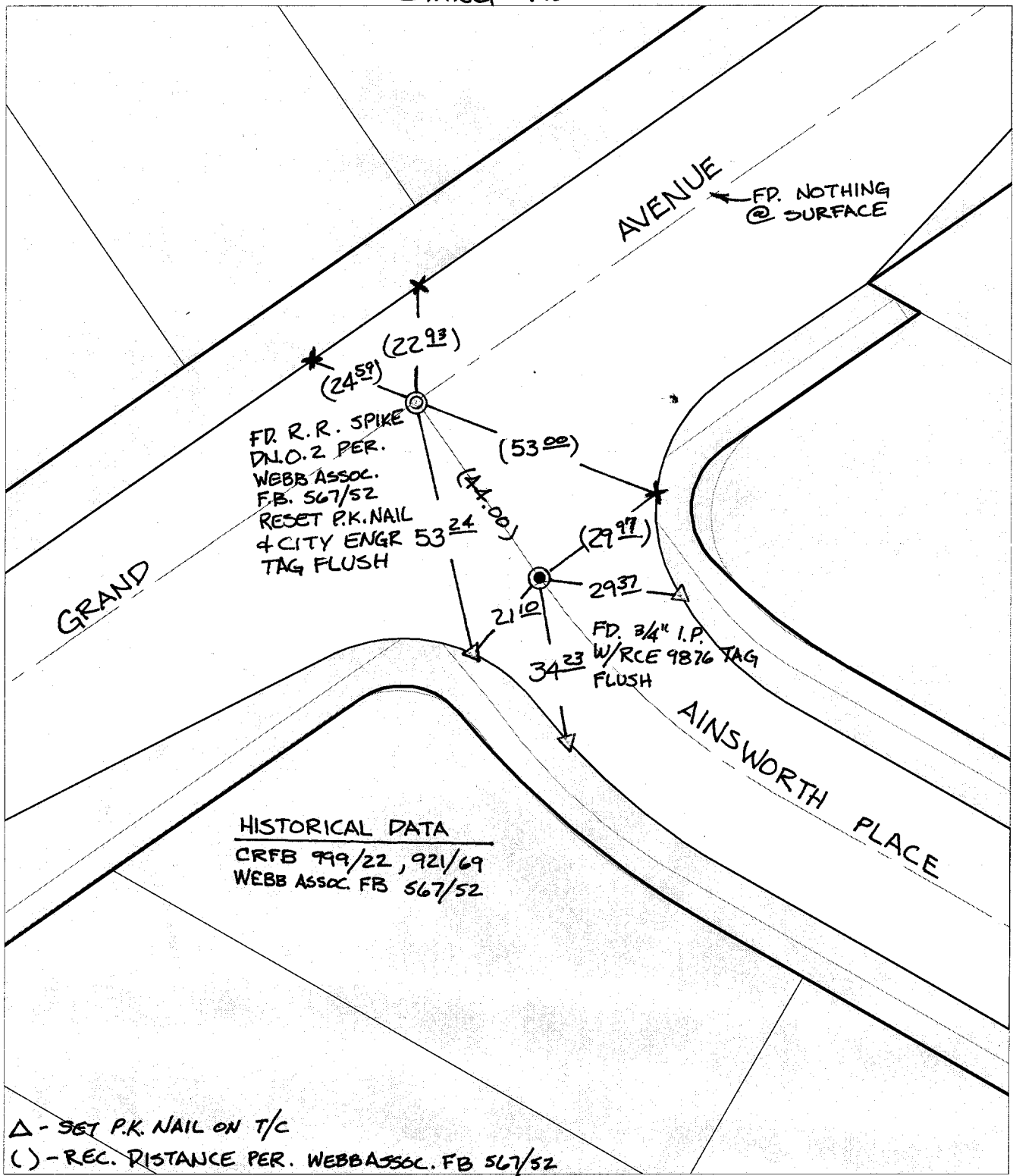


SWING TIES



△ - SET P.K. NAIL ON T/C  
 ( ) - REC. DISTANCE PER. WEBB ASSOC. FB 567/52

× FD. Ramset Nail on T/C    ● FD. LD. & TK. on T/C    P.K. and City Engineer tag to be set @ surface after street construction is complete. (If possible)  
 ■ FD. "C" Nail on T/C    ○ Set LD. & TK. on T/C

Scale: 1" = 30'  
 Date: 03/25/02  
 Drawn by: survey  
 F.B.:  
 TR-Sec: -

## OFFICIAL TIE PLAT

### CITY OF RIVERSIDE

*These ties are for the purpose of perpetuating the found monumentation. No claim is made as to the relationship of the points or lines shown hereon to true boundary locations.*



Sheet 1 of 1  
 Cadme MB: 38-3