

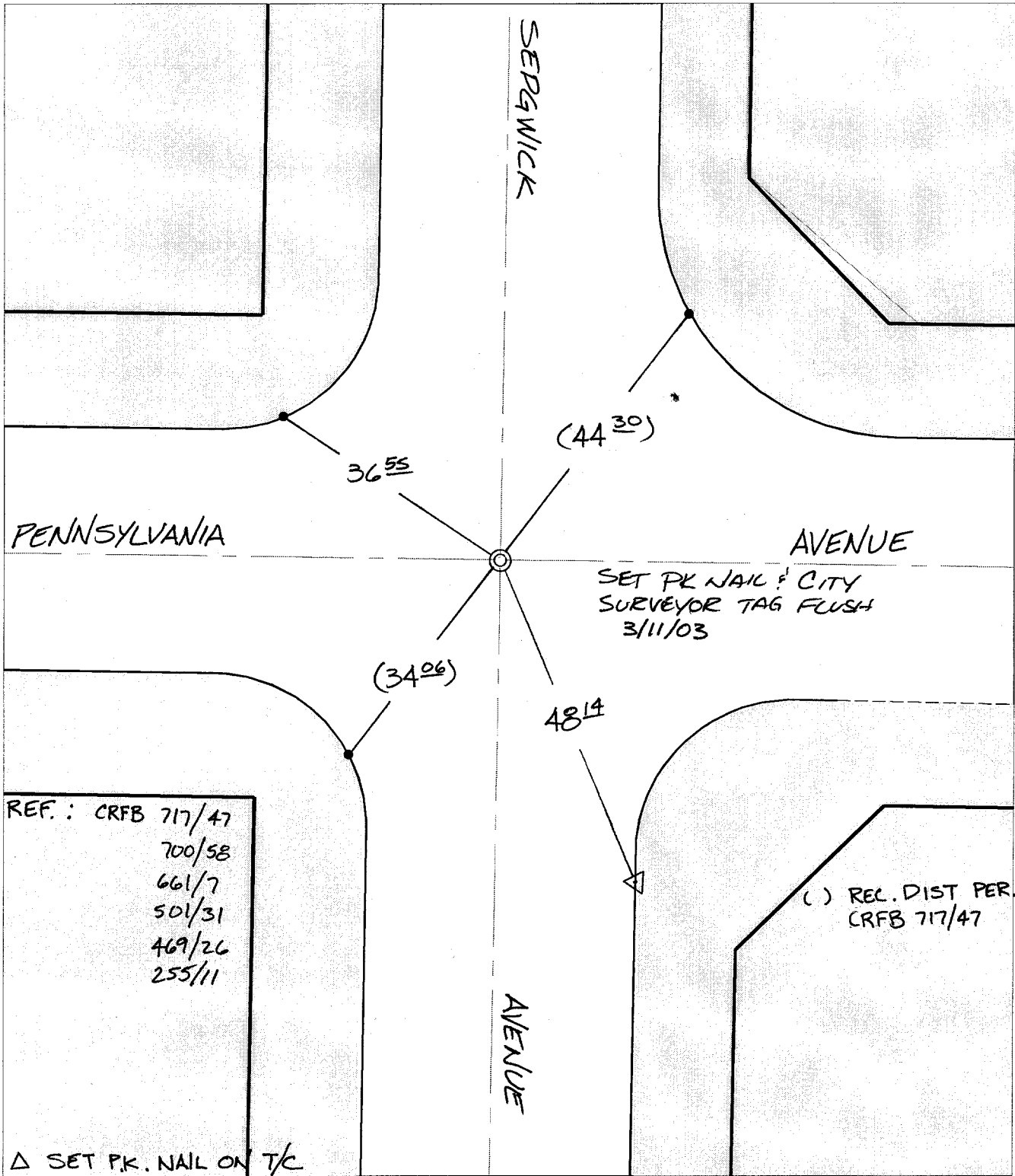
C10911.TIF

Street:

SEDGWICK AVENUE

OFFICIAL USE ONLY

X-Street: PENNSYLVANIA AVENUE



× FD. Ramset Nail on T/C    ● FD. LD. & TK. on T/C    P.K. and City Engineer tag to be set @ surface after street construction is complete. (If possible)  
 ■ FD. "C" Nail on T/C    ○ Set LD. & TK. on T/C

Scale: 1" = 20'

Date: 07/24/02

Drawn by: SURVEY

F.B.:

TR-Sec: T2SR5W-25

## OFFICIAL TIE PLAT

### CITY OF RIVERSIDE

*These ties are for the purpose of perpetuating the found monumentation. No claim is made as to the relationship of the points or lines shown hereon to true boundary locations.*



Sheet 1 of 1

Cadme MB: 40-5