

Street:

SEDGWICK AVENUE

OFFICIAL USE ONLY X-Street:

PROSPECT AVENUE

TRANSIT TIES

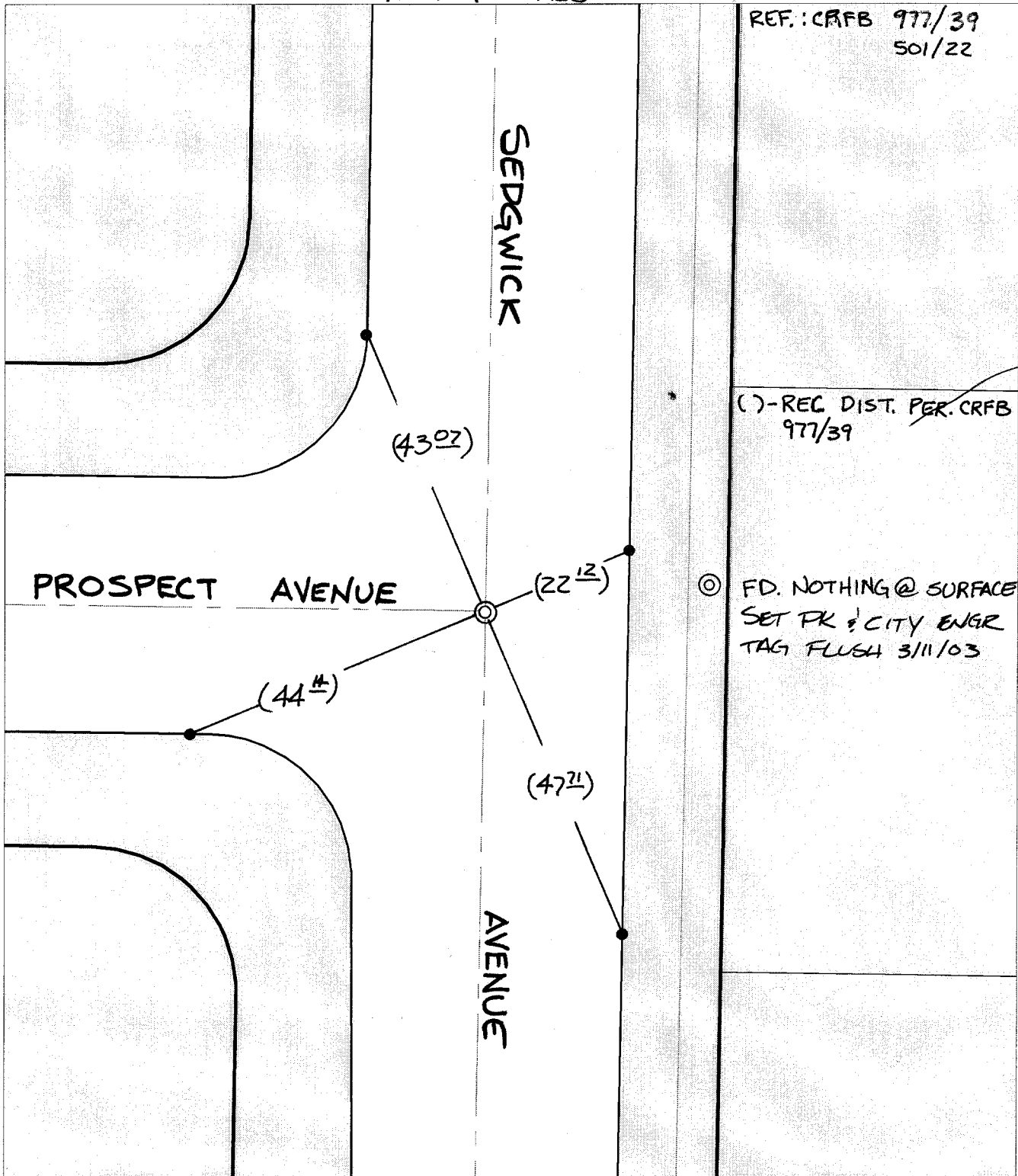
REF.: CRFB 977/39
501/22

SEDGWICK

() - REC. DIST. PER. CRFB
977/39

⊙ FD. NOTHING @ SURFACE
SET PK & CITY ENGR
TAG FLUSH 3/11/03

AVENUE



- ✕ FD. Ramset Nail on T/C ● FD. LD. & TK. on T/C
- FD. "C" Nail on T/C ○ Set LD. & TK. on T/C

P.K. and City Engineer tag to be set @ surface after street construction is complete. (If possible)

Scale: 1" = 20'

Date: 07/24/02

Drawn by: SURVEY

F.B.:

TR-Sec: T2SR5W-25

OFFICIAL TIE PLAT

CITY OF RIVERSIDE



These ties are for the purpose of perpetuating the found monumentation. No claim is made as to the relationship of the points or lines shown hereon to true boundary locations.

Sheet 1 of 1

Cadme MB: 40-5