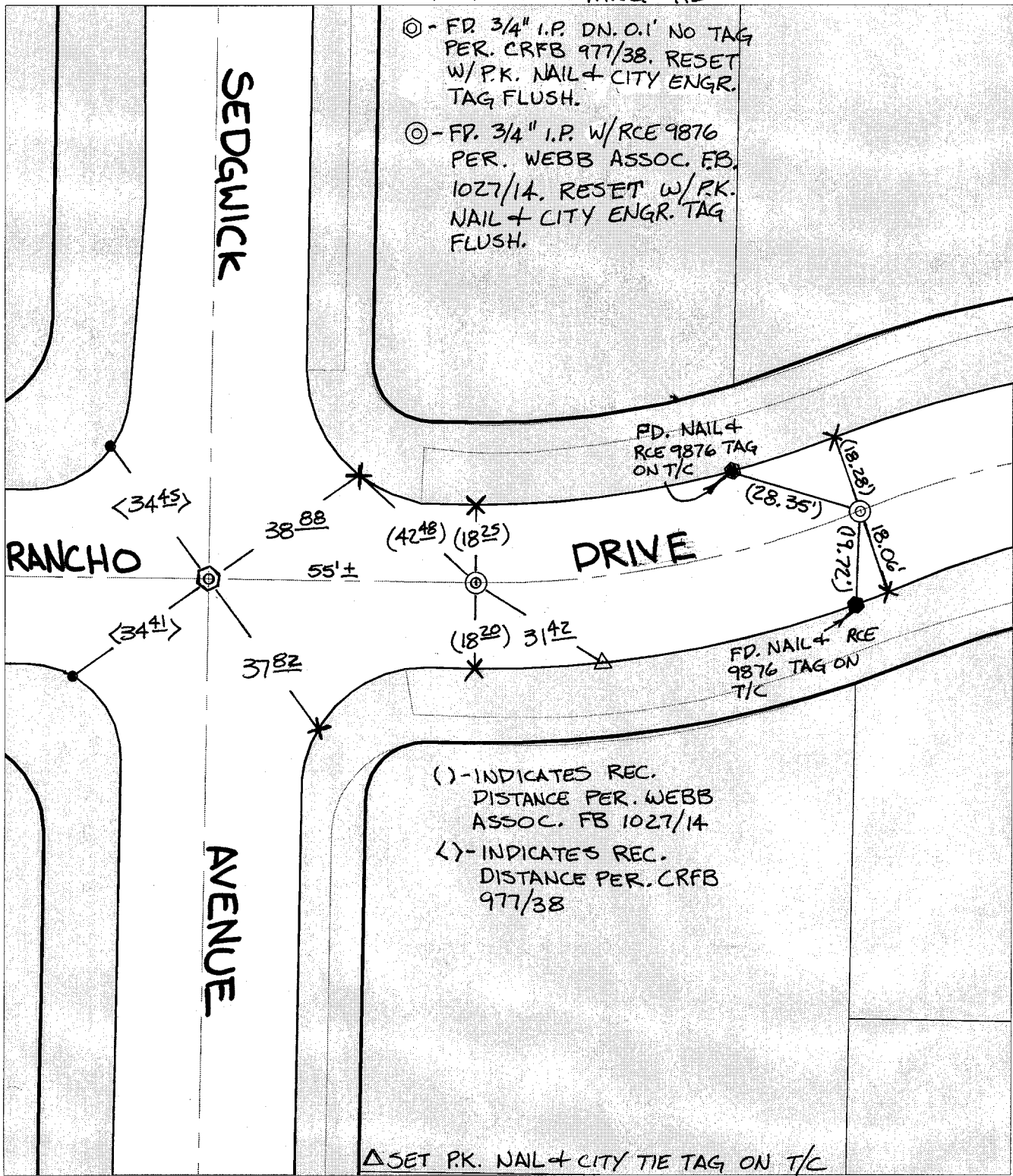


TRANSIT & SWING TIES

- ⊙ - FD. 3/4" I.P. DN. 0.1' NO TAG PER. CRFB 977/38. RESET W/P.K. NAIL & CITY ENGR. TAG FLUSH.
- ⊙ - FD. 3/4" I.P. W/RCE 9876 PER. WEBB ASSOC. FB. 1027/14. RESET W/P.K. NAIL & CITY ENGR. TAG FLUSH.



() - INDICATES REC. DISTANCE PER. WEBB ASSOC. FB 1027/14
 < > - INDICATES REC. DISTANCE PER. CRFB 977/38

Δ SET P.K. NAIL & CITY TIE TAG ON T/C

- × FD. Ramset Nail on T/C
- FD. LD. & TK. on T/C
- FD. "C" Nail on T/C
- Set LD. & TK. on T/C

P.K. and City Engineer tag to be set @ surface after street construction is complete. (If possible)

Scale: 1" = 30'
 Date: 03/06/03
 Drawn by: SURVEY
 F.B.:
 TR-Sec: T2SR5W-25

OFFICIAL TIE PLAT
CITY OF RIVERSIDE

These ties are for the purpose of perpetuating the found monumentation. No claim is made as to the relationship of the points or lines shown hereon to true boundary locations.



Sheet 1 of 1
 Cadme MB: 40-5