

C10920.TIF

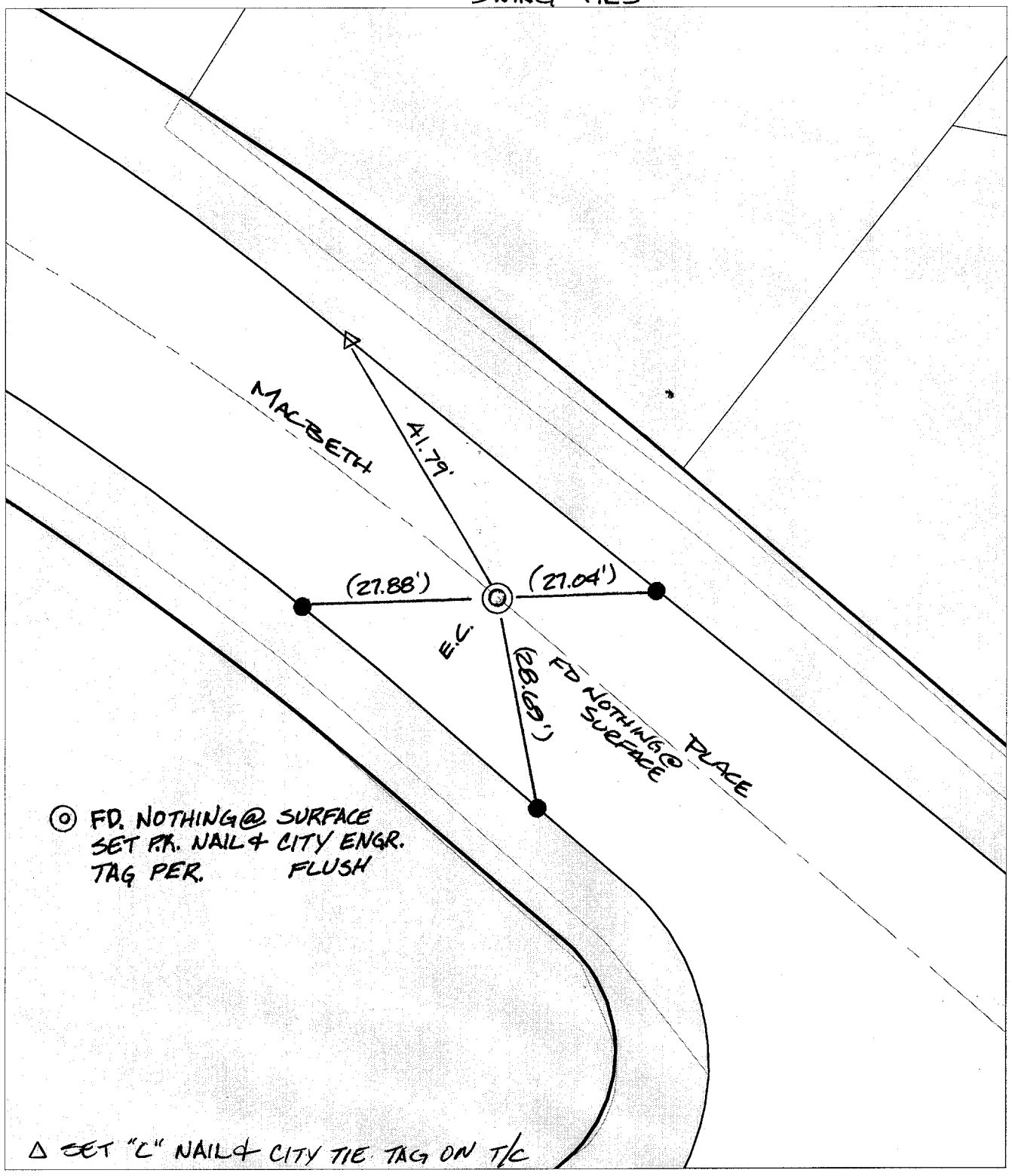
Street:

MAC BETH PLACE

OFFICIAL USE ONLY

X-Street EC NW OF PRINCE ALBERT

SWING TIES



⊙ FD. NOTHING @ SURFACE
 SET P.K. NAIL & CITY ENGR.
 TAG PER. FLUSH

△ SET "C" NAIL & CITY TIE TAG ON T/C

- ✕ FD. Ramset Nail on T/C ● FD. LD. & TK. on T/C
- FD. "C" Nail on T/C ○ Set LD. & TK. on T/C

P.K. and City Engineer tag to be set @
 surface after street construction is
 complete. (If possible)

Scale: 1" = 20'
 Date: 04/17/02
 Drawn by: scurtis
 F.B.:
 TR-Sec: T2SR5W-25

OFFICIAL TIE PLAT

CITY OF RIVERSIDE

*These ties are for the purpose of perpetuating the found
 monumentation. No claim is made as to the relationship of
 the points or lines shown hereon to true boundary locations.*



Sheet 1 of 1
 Cadme MB: 40-6