

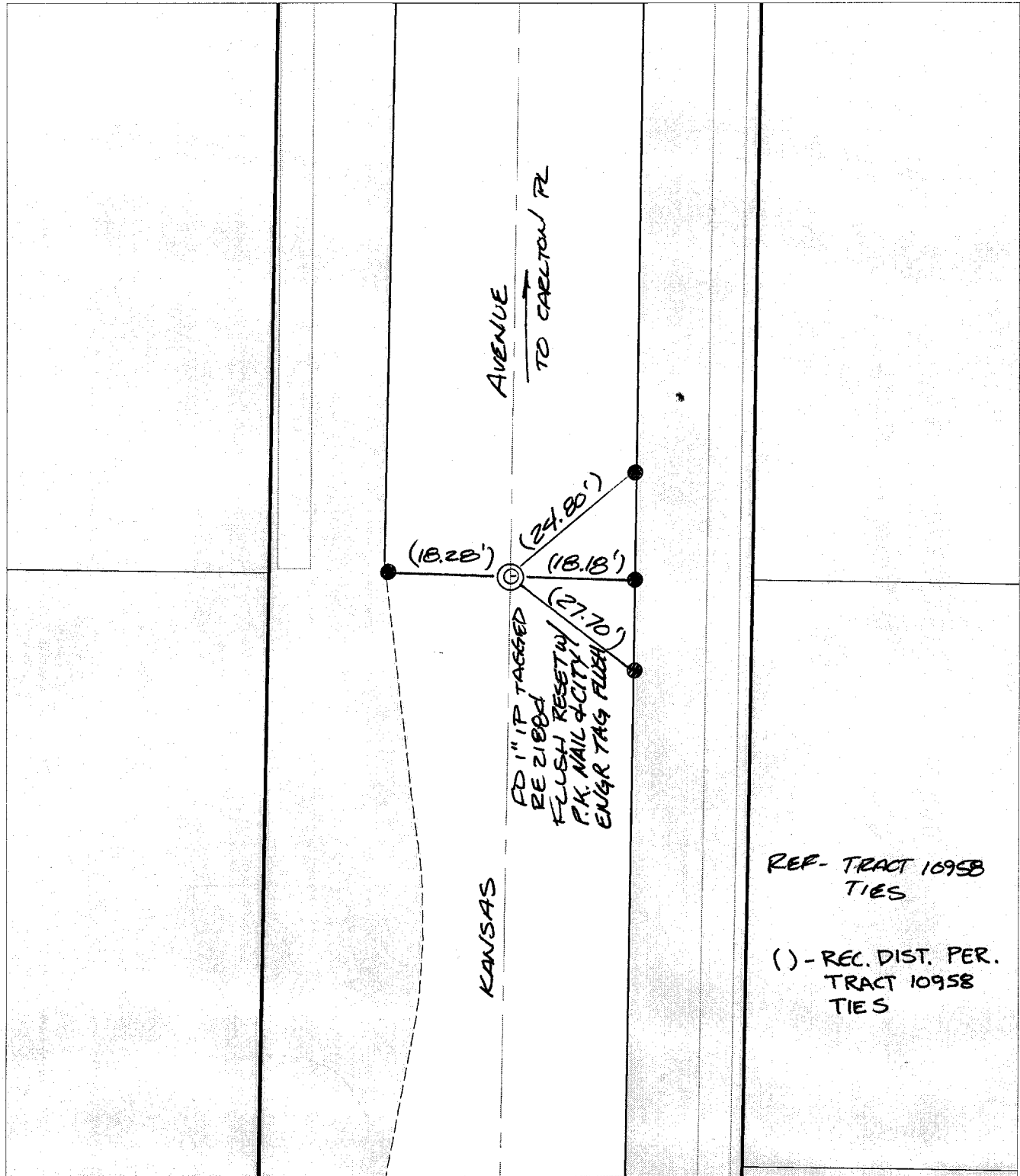
C10923.T1F

Street:

KANSAS AVE

X-Street: TR BDY S OF CARLTON  
OFFICIAL USE ONLY

SWING TIES



REF- TRACT 1095B  
TIES

( ) - REC. DIST. PER.  
TRACT 1095B  
TIES

- ✕ FD. Ramset Nail on T/C
- FD. LD. & TK. on T/C
- FD. "C" Nail on T/C
- Set LD. & TK. on T/C

P.K. and City Engineer tag to be set @  
surface after street construction is  
complete. (If possible)

Scale: 1" = 20'

Date: 05/16/02

Drawn by: survey

F.B.:

TR-Sec: T2SR5W-25

# OFFICIAL TIE PLAT

## CITY OF RIVERSIDE

*These ties are for the purpose of perpetuating the found  
monumentation. No claim is made as to the relationship of  
the points or lines shown hereon to true boundary locations.*



Sheet 1 of 1

Cadme MB: 40-6