

C10925.TIF

Street:

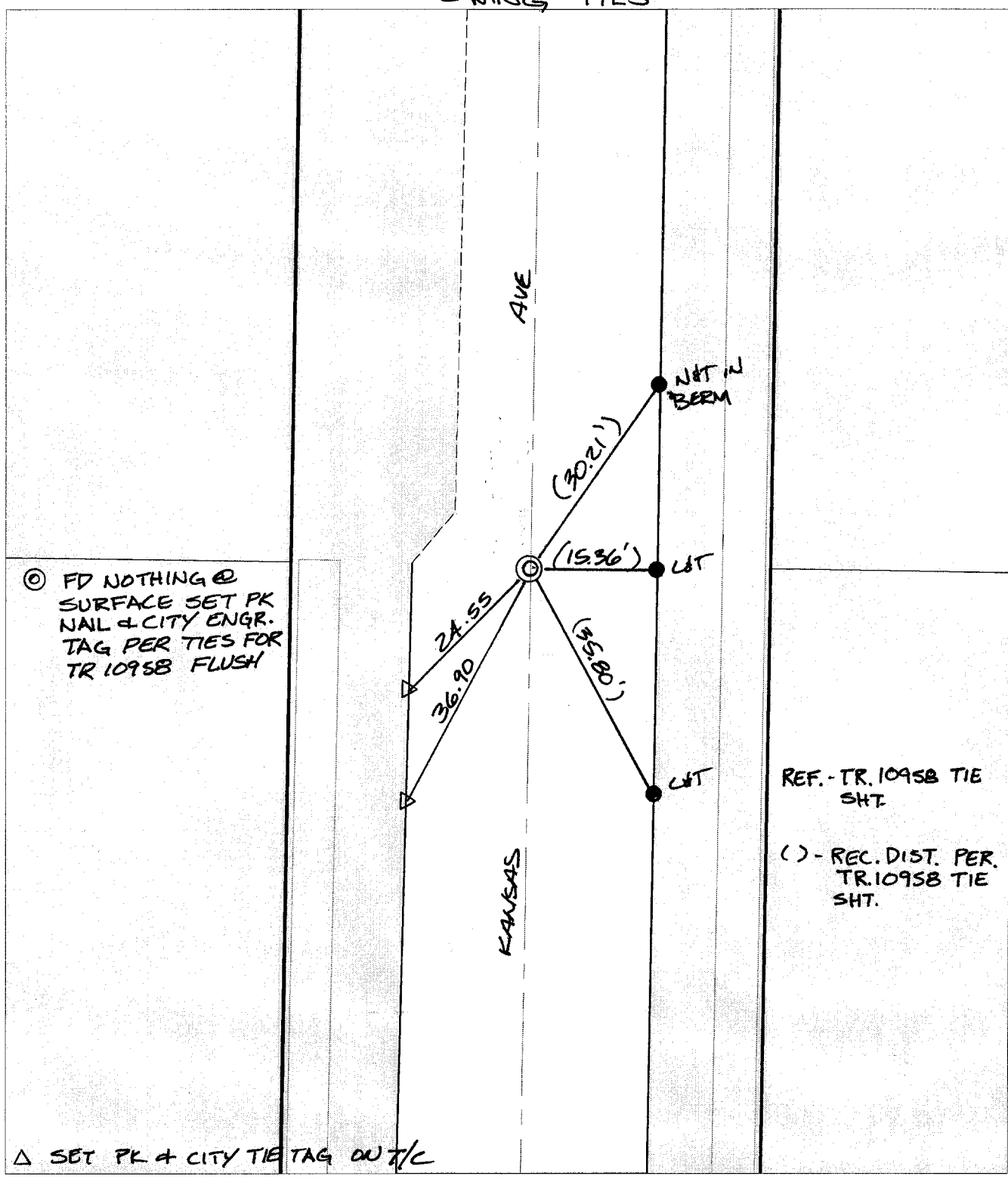
KANSAS AVE

OFFICIAL USE ONLY

X-Street:

TR BDY N OF RANCHO

SWING TIES



⊗ FD NOTHING @ SURFACE SET PK NAIL & CITY ENGR. TAG PER TIES FOR TR 10958 FLUSH

REF. - TR. 10958 TIE SH. T

( ) - REC. DIST. PER. TR. 10958 TIE SH. T

Δ SET PK & CITY TIE TAG ON T/C

- ⊗ FD. Ramset Nail on T/C
- FD. LD. & TK. on T/C
- FD. "C" Nail on T/C
- Set LD. & TK. on T/C

P.K. and City Engineer tag to be set @ surface after street construction is complete. (If possible)

Scale: 1" = 20'

Date: 05/16/02

Drawn by: survey

F.B.:

TR-Sec: T2SR5W-25

## OFFICIAL TIE PLAT

### CITY OF RIVERSIDE

*These ties are for the purpose of perpetuating the found monumentation. No claim is made as to the relationship of the points or lines shown hereon to true boundary locations.*



Sheet 1 of 1

Cadme MB: 40-6