

C10926.TIF

Street:

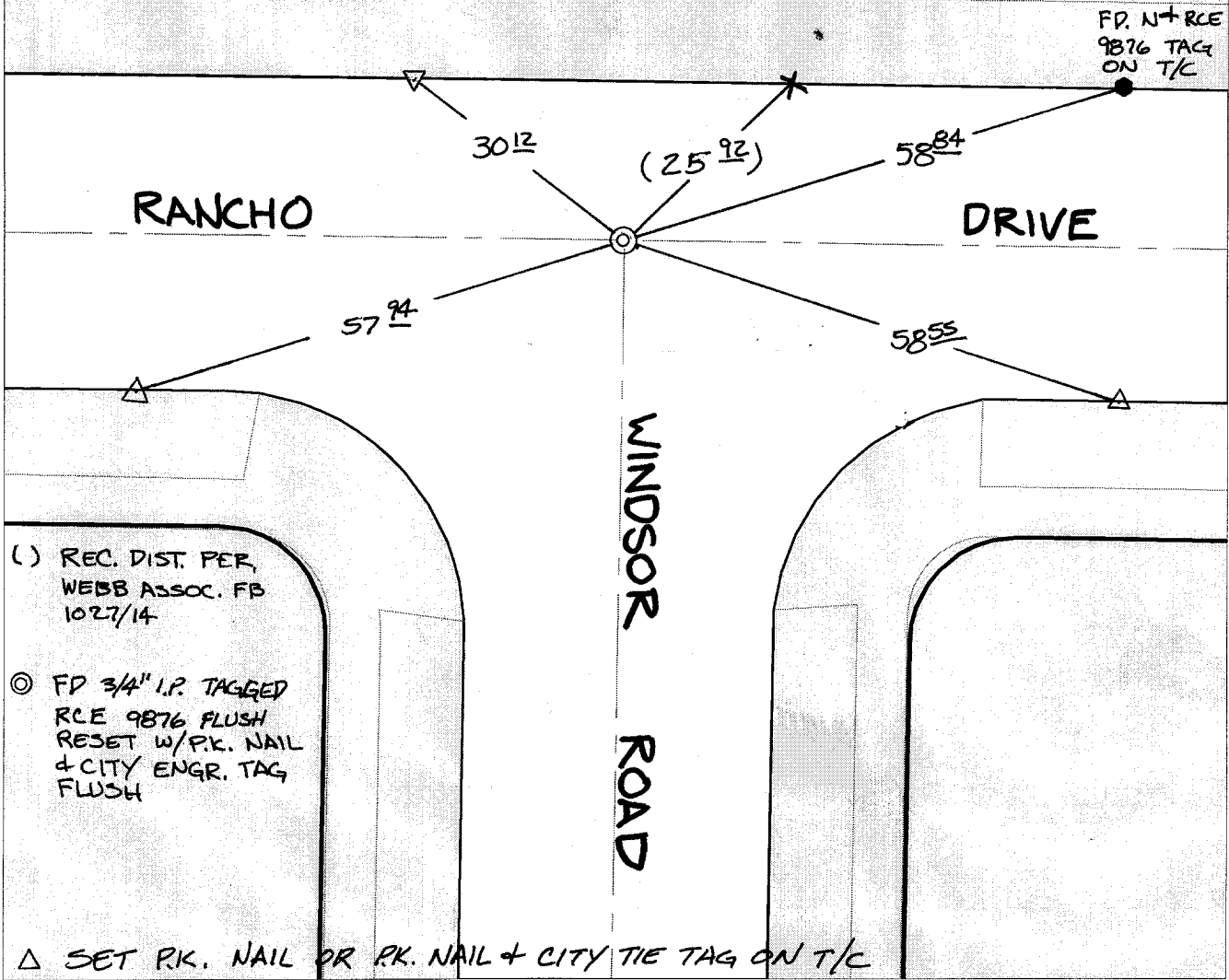
RANCHO DRIVE

X-Street:
OFFICIAL USE ONLY

WINDSOR ROAD

SWING TIES

REF.: WEBB ASSOC. FB 1027/14



() REC. DIST. PER. WEBB ASSOC. FB 1027/14

○ FD 3/4" I.P. TAGGED RCE 9876 FLUSH RESET W/PK. NAIL & CITY ENGR. TAG FLUSH

△ SET P.K. NAIL OR P.K. NAIL + CITY TIE TAG ON T/C

- × FD. Ramset Nail on T/C
- FD. LD. & TK. on T/C
- FD. "C" Nail on T/C
- Set LD. & TK. on T/C

P.K. and City Engineer tag to be set @ surface after street construction is complete. (If possible)

Scale: 1" = 20'

Date: 07/30/02

Drawn by: SURVEY

F.B.:

TR-Sec: T2SR5W-25

OFFICIAL TIE PLAT

CITY OF RIVERSIDE

These ties are for the purpose of perpetuating the found monumentation. No claim is made as to the relationship of the points or lines shown hereon to true boundary locations.



Sheet 1 of 1

Cadme MB: 40-6