

C10936.TIF

Street:

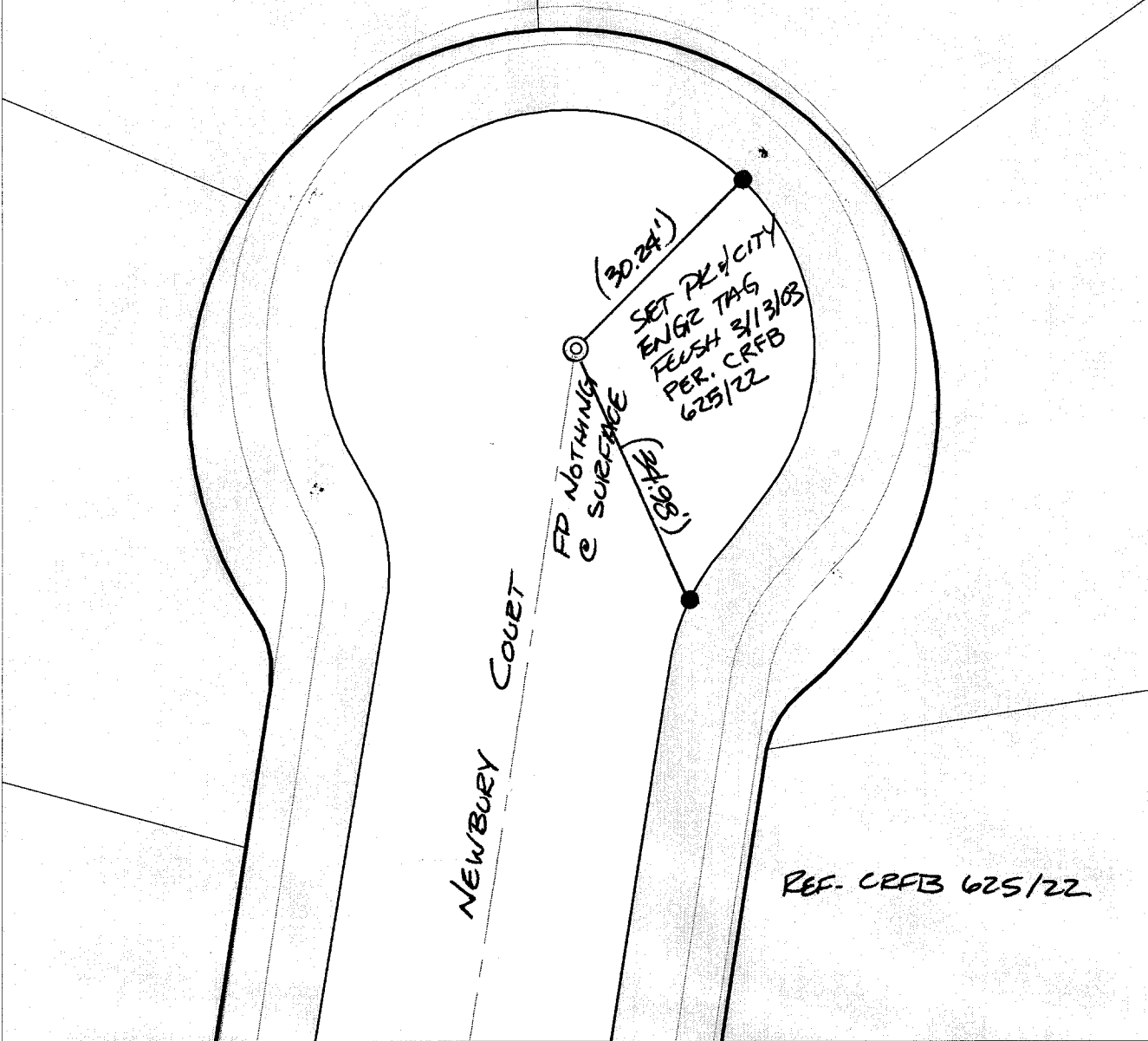
NEWBURY CT

X-Street:  
OFFICIAL USE ONLY

CUL-DE-SAC

SWING TIES

( ) REC. DIST. PER.  
CRFB 625/22



- ✕ FD. Ramset Nail on T/C    ● FD. LD. & TK. on T/C    P.K. and City Engineer tag to be set @ surface after street construction is complete. (If possible)
- FD. "C" Nail on T/C    ○ Set LD. & TK. on T/C

Scale: 1" = 20'  
 Date: 04/17/02  
 Drawn by: scurtis  
 F.B.:  
 TR-Sec: T2SR5W-25

## OFFICIAL TIE PLAT

### CITY OF RIVERSIDE



*These ties are for the purpose of perpetuating the found monumentation. No claim is made as to the relationship of the points or lines shown hereon to true boundary locations.*

Sheet 1 of 1  
 Cadme MB: 40-6