

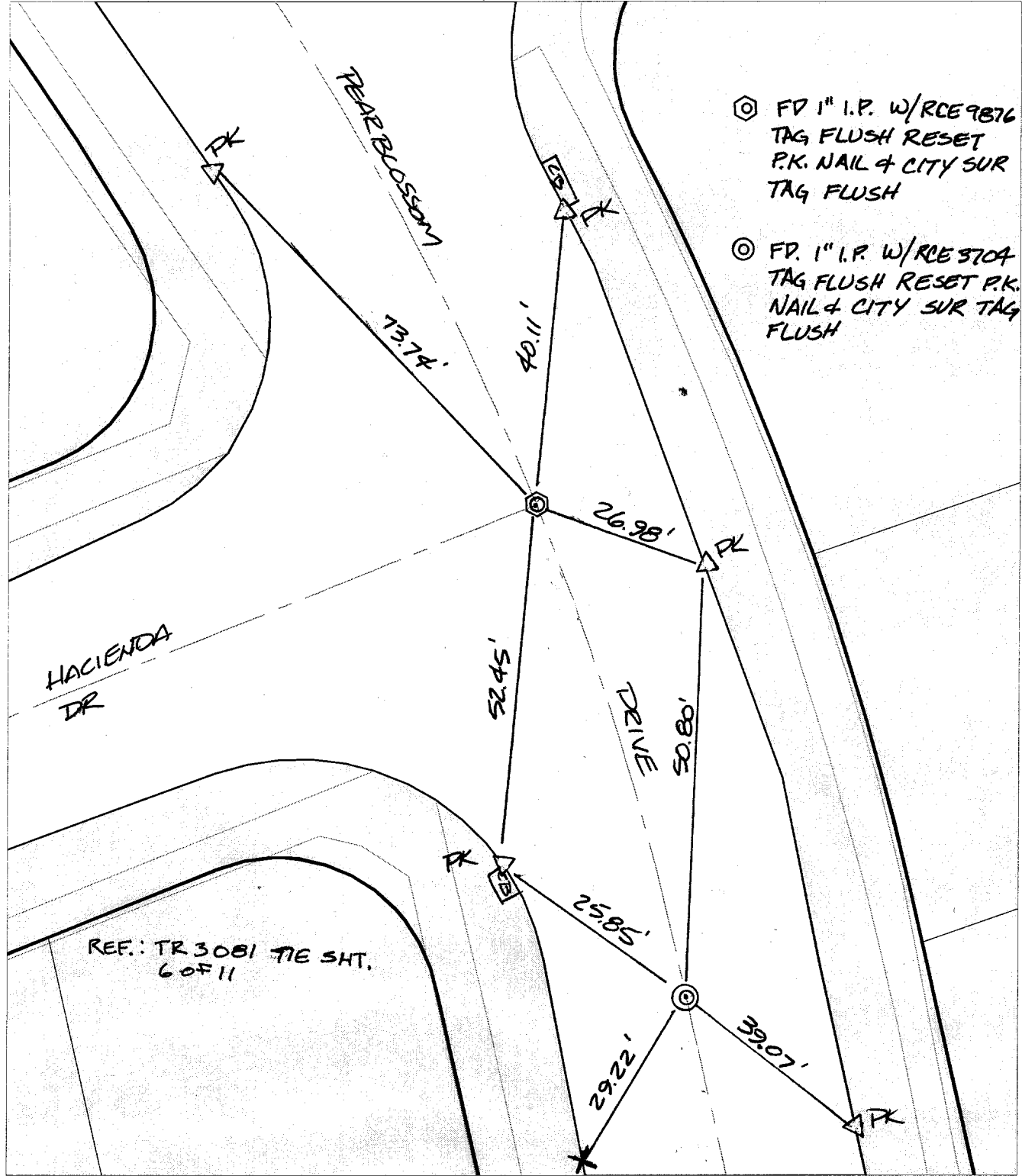
Street:

PEARLBLOSSOM DRIVE

X-StreetHACIENDA DR. CUL-DE-SAC

OFFICIAL USE ONLY

SWING TIES



- ⊗ FD 1" I.P. W/RCE 9876 TAG FLUSH RESET P.K. NAIL & CITY SUR TAG FLUSH
- ⊙ FD. 1" I.P. W/RCE 3704 TAG FLUSH RESET P.K. NAIL & CITY SUR TAG FLUSH

- ✕ FD. Ramset Nail on T/C
- FD. LD. & TK. on T/C
- FD. "C" Nail on T/C
- Set LD. & TK. on T/C

P.K. and City Engineer tag to be set @ surface after street construction is complete. (If possible)

Scale: 1" = 20'
 Date: 05/10/02
 Drawn by: survey
 F.B.:
 TR-Sec: T2SR4W-32

OFFICIAL TIE PLAT
 CITY OF RIVERSIDE

These ties are for the purpose of perpetuating the found monumentation. No claim is made as to the relationship of the points or lines shown hereon to true boundary locations.



Sheet 1 of 1
 Cadme MB: 42-7