

C10949.TIF

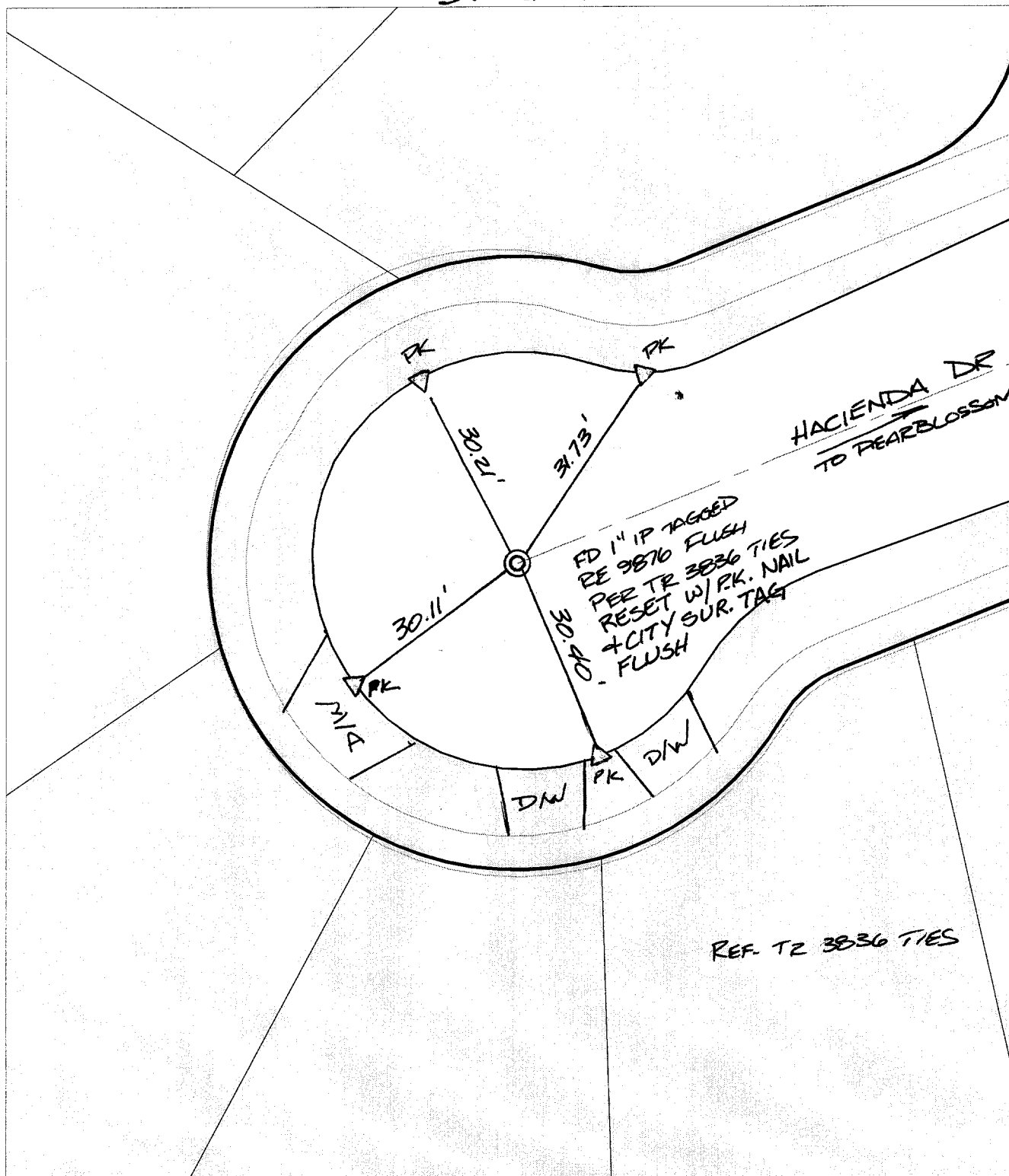
Street:

HACIENDA DRIVE

X-Street:  
OFFICIAL USE ONLY

CUL-DE-SAC

SWING TIES



REF. T2 3836 TIES

- ✕ FD. Ramset Nail on T/C
- FD. LD. & TK. on T/C
- FD. "C" Nail on T/C
- Set LD. & TK. on T/C

P.K. and City Engineer tag to be set @ surface after street construction is complete. (If possible)

Scale: 1" = 20'  
 Date: 05/08/02  
 Drawn by: survey  
 F.B.:  
 TR-Sec: T2SR4W-32

## OFFICIAL TIE PLAT

### CITY OF RIVERSIDE

*These ties are for the purpose of perpetuating the found monumentation. No claim is made as to the relationship of the points or lines shown hereon to true boundary locations.*



Sheet 1 of 1  
 Cadme MB: 42-7