

C10950.TIF

Street:

PEARLBLOSSOM DRIVE

OFFICIAL USE ONLY

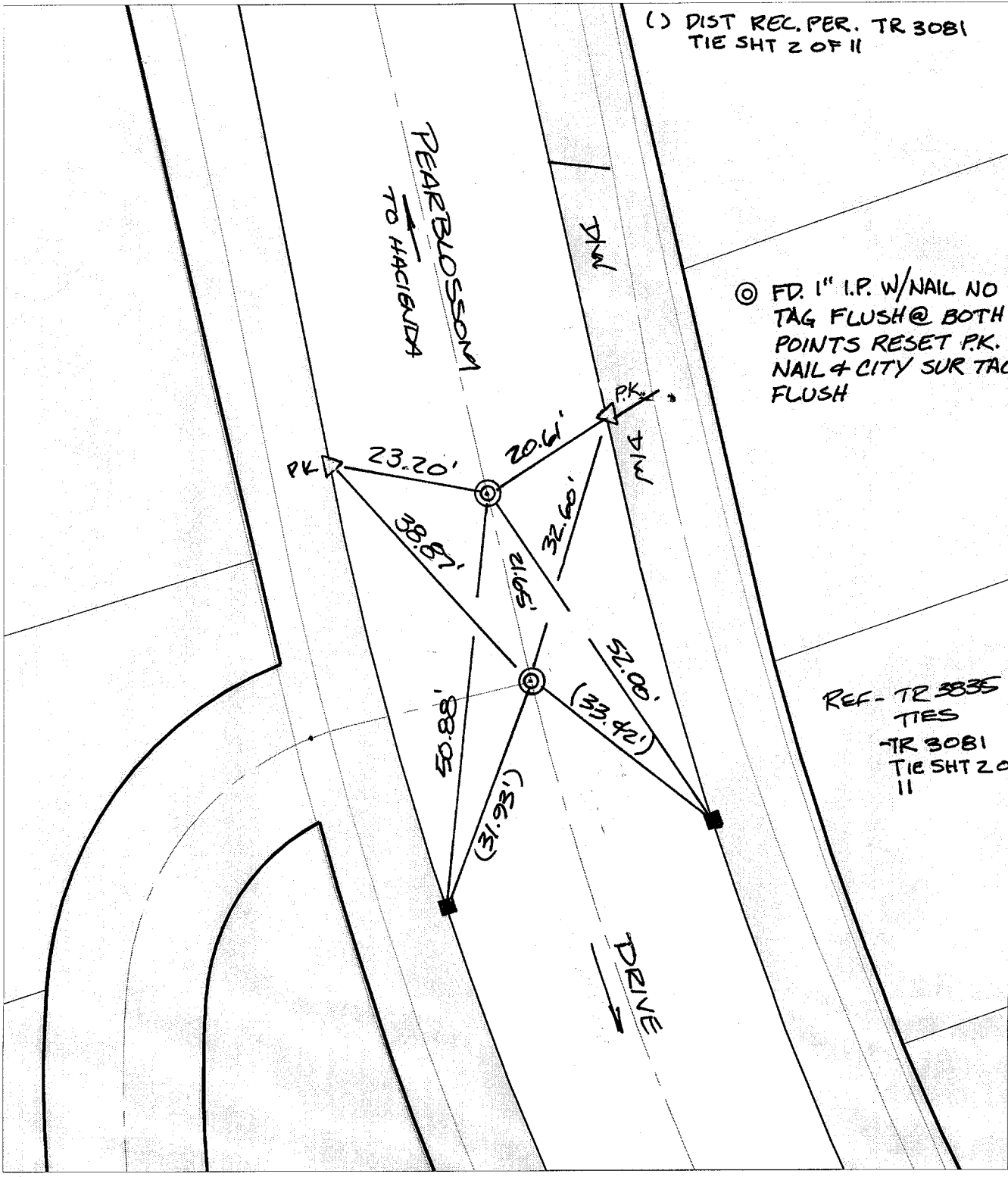
X-Street C NW OF EL CERRITO DR.

SWING TIES

() DIST REC. PER. TR 3081 TIE SHT 2 OF 11

⊙ FD. 1" I.P. W/NAIL NO TAG FLUSH @ BOTH POINTS RESET P.K. NAIL & CITY SUR TAG FLUSH

REF - TR 3835 TIES
TR 3081 TIE SHT 2 OF 11



- ✕ FD. Ramset Nail on T/C
- FD. LD. & TK. on T/C
- FD. "C" Nail on T/C
- Set LD. & TK. on T/C

P.K. and City Engineer tag to be set @ surface after street construction is complete. (If possible)

Scale: 1" = 20'
 Date: 05/13/02
 Drawn by: survey
 F.B.:
 TR-Sec: T2SR4W-32

OFFICIAL TIE PLAT
CITY OF RIVERSIDE

These ties are for the purpose of perpetuating the found monumentation. No claim is made as to the relationship of the points or lines shown hereon to true boundary locations.



Sheet 1 of 1
 Cadme MB: 42-7