

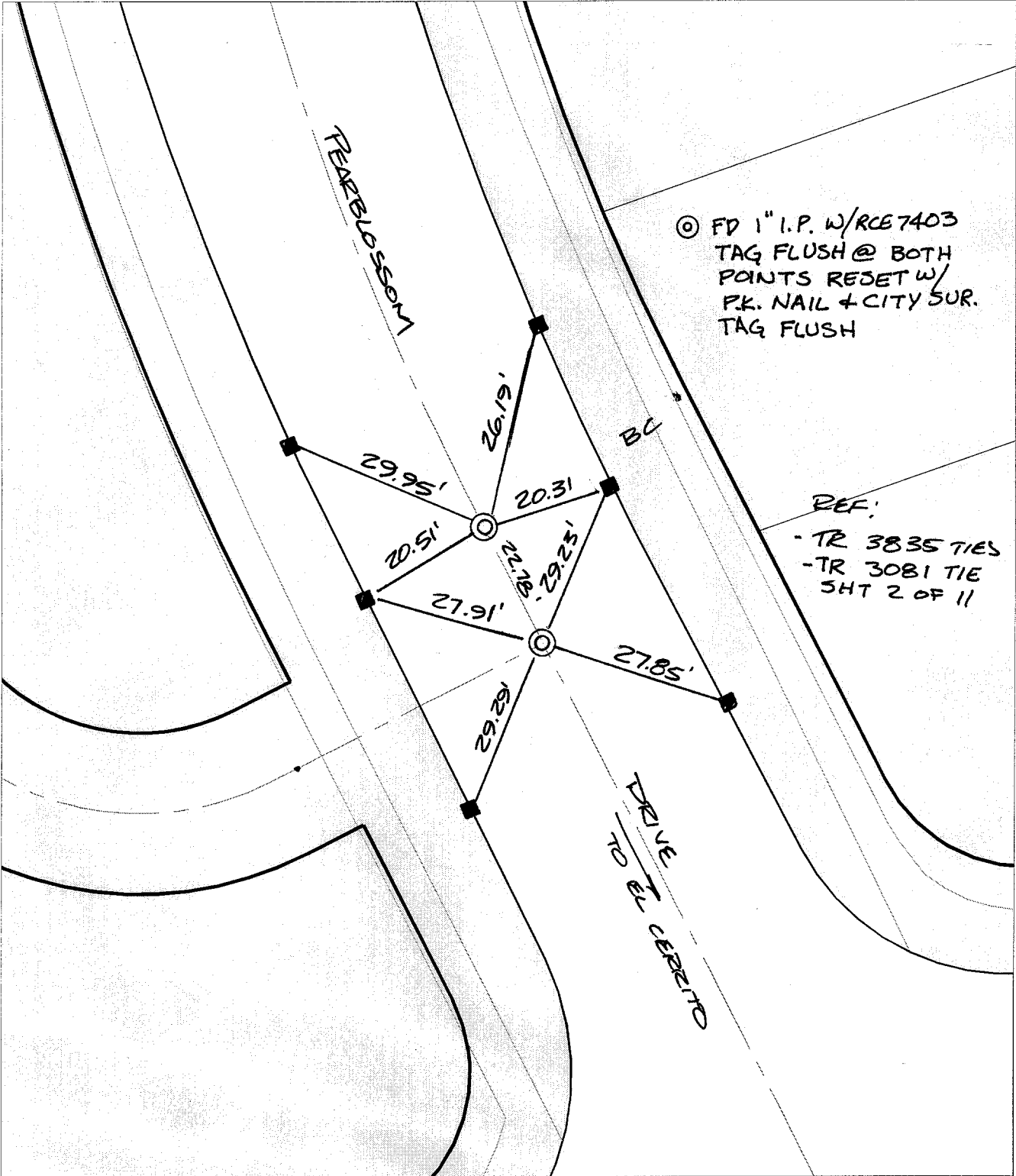
Street:

PEARLBLOSSOM DRIVE

X-Street/BC NW OF EL CERRITO DR.

OFFICIAL USE ONLY

SWING TIES



⊙ FD 1" I.P. W/RCE7403
TAG FLUSH @ BOTH
POINTS RESET W/
P.K. NAIL + CITY SUR.
TAG FLUSH

REF:
- TR 3835 TIES
- TR 3081 TIE
SHT 2 OF 11

- ✕ FD. Ramset Nail on T/C
- FD. LD. & TK. on T/C
- FD. "C" Nail on T/C
- Set LD. & TK. on T/C

P.K. and City Engineer tag to be set @
surface after street construction is
complete. (If possible)

Scale: 1" = 20'

Date: 05/13/02

Drawn by: survey

F.B.:

TR-Sec: T2SR4W-32

OFFICIAL TIE PLAT

CITY OF RIVERSIDE

*These ties are for the purpose of perpetuating the found
monumentation. No claim is made as to the relationship of
the points or lines shown hereon to true boundary locations.*



Sheet 1 of 1

Cadme MB: 42-7