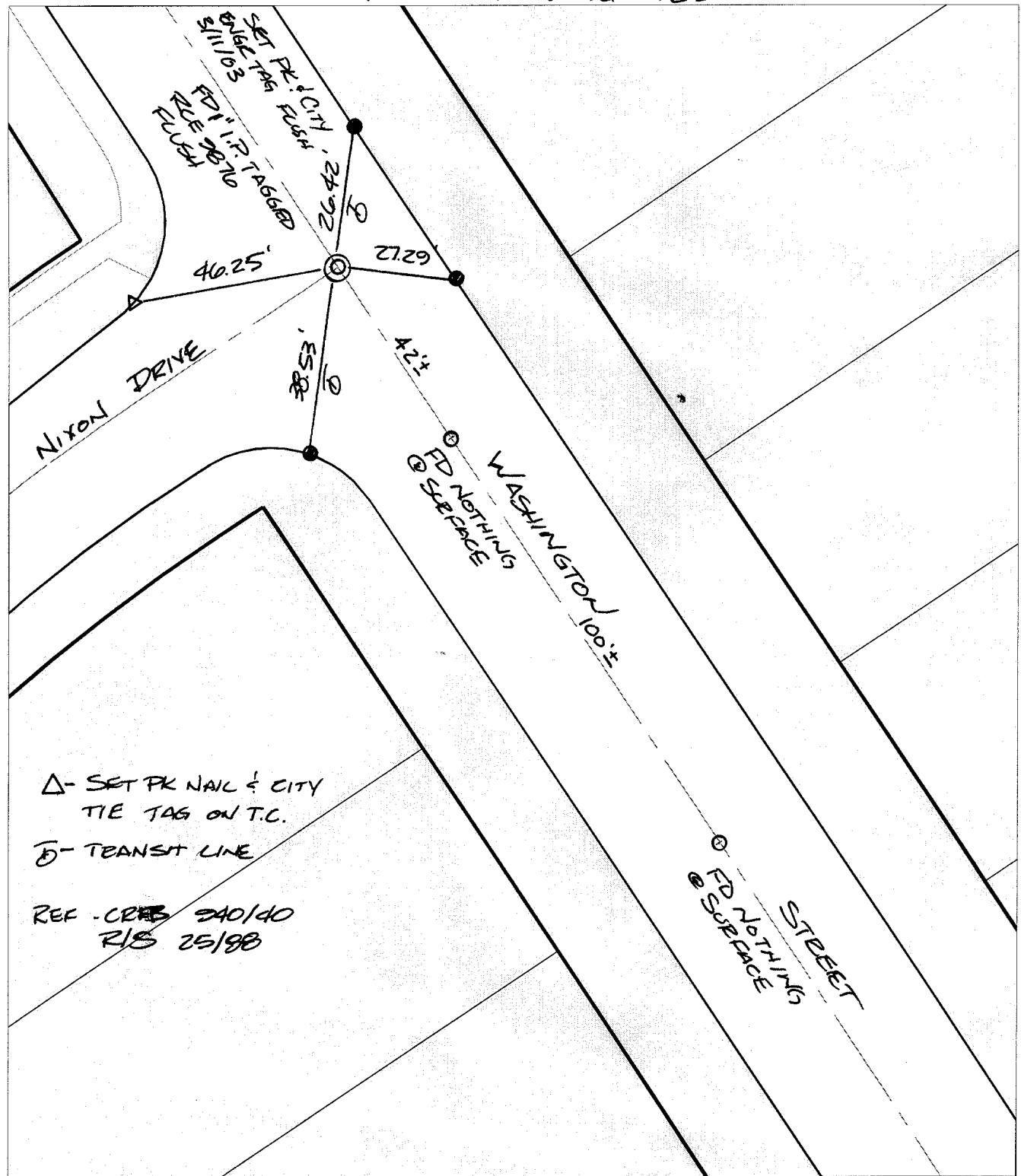


C 109465.TIF

Street: WASHINGTON STREET X-Street: NIXON DRIVE WEST  
OFFICIAL USE ONLY

TRANSIT & SWING TIES



△ - SET PK NAIL & CITY TIE TAG ON T.C.  
 ⊕ - TRANSIT LINE

REF - CRB 240/40  
 RIS 25/98

✕ FD. Ramset Nail on T/C    ● FD. LD. & TK. on T/C    P.K. and City Engineer tag to be set @ surface after street construction is complete. (If possible)  
 ■ FD. "C" Nail on T/C    ○ Set LD. & TK. on T/C

Scale: 1" = 30'  
 Date: 07/01/02  
 Drawn by: SURVEY  
 F.B.:  
 TR-Sec: T3SR5W-3

**OFFICIAL TIE PLAT**  
**CITY OF RIVERSIDE**

*These ties are for the purpose of perpetuating the found monumentation. No claim is made as to the relationship of the points or lines shown hereon to true boundary locations.*



Sheet 1 of 1  
 Cadme MB: 53-8