

C10973.TIF

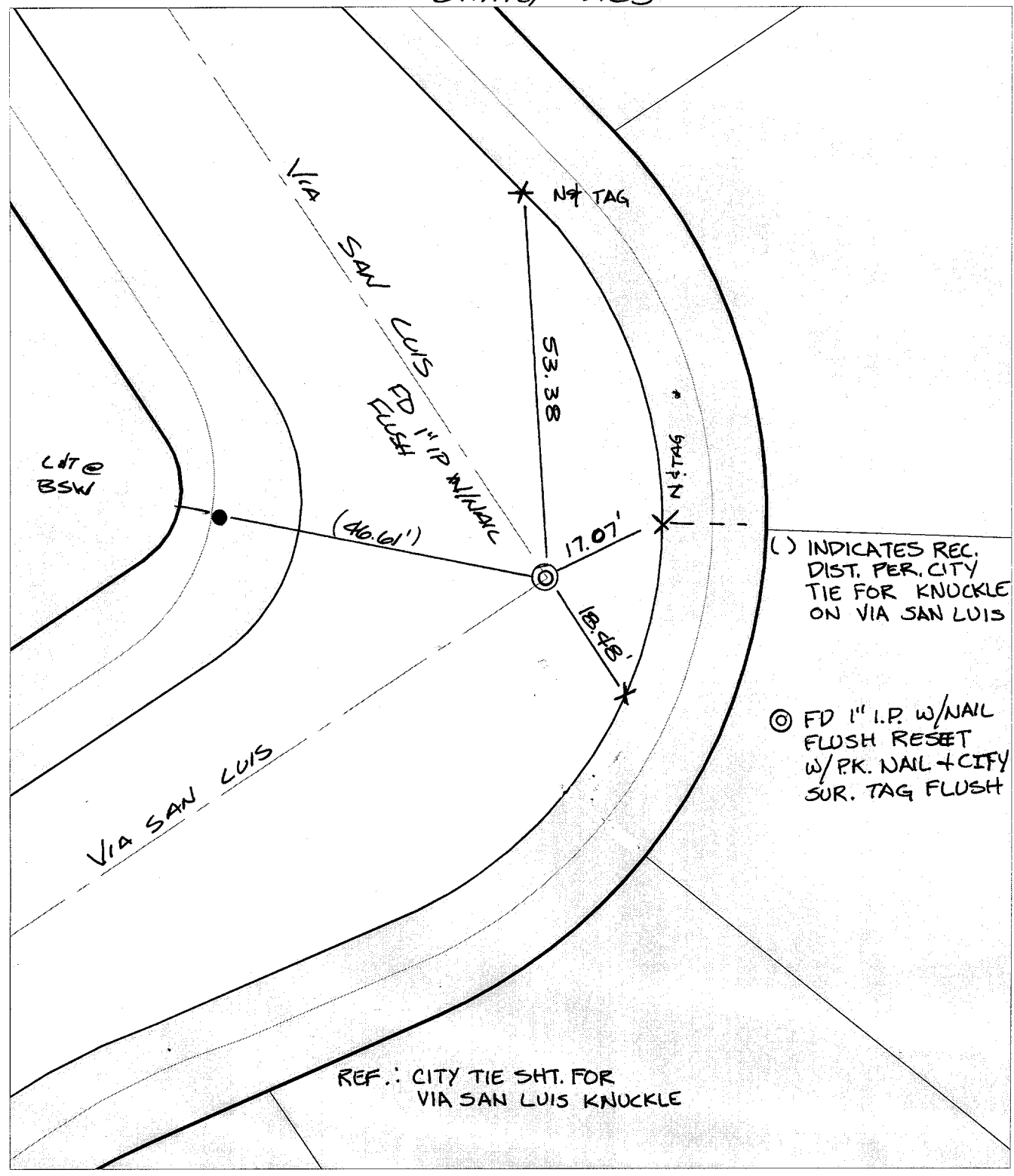
Street:

VIA SAN LUIS

X-Street:
OFFICIAL USE ONLY

KNUCKLE

SWING TIES



() INDICATES REC. DIST. PER. CITY TIE FOR KNUCKLE ON VIA SAN LUIS

⊙ FD 1" I.P. W/NAIL FLUSH RESET W/PK. NAIL + CITY SUR. TAG FLUSH

REF.: CITY TIE SHT. FOR VIA SAN LUIS KNUCKLE

- ✕ FD. Ramset Nail on T/C
- FD. LD. & TK. on T/C
- FD. "C" Nail on T/C
- Set LD. & TK. on T/C

P.K. and City Engineer tag to be set on surface after street construction is complete. (If possible)

Scale: 1" = 20'

Date: 05/20/02

Drawn by: SURVEY

F.B.:

TR-Sec: T3SR5W-5

OFFICIAL TIE PLAT

CITY OF RIVERSIDE

These ties are for the purpose of perpetuating the found monumentation. No claim is made as to the relationship of the points or lines shown hereon to true boundary locations.



Sheet 1 of 1

Cadme MB: 52-7