

Street:

VIA SAN LUIS

X-Street: OFFICIAL USE ONLY

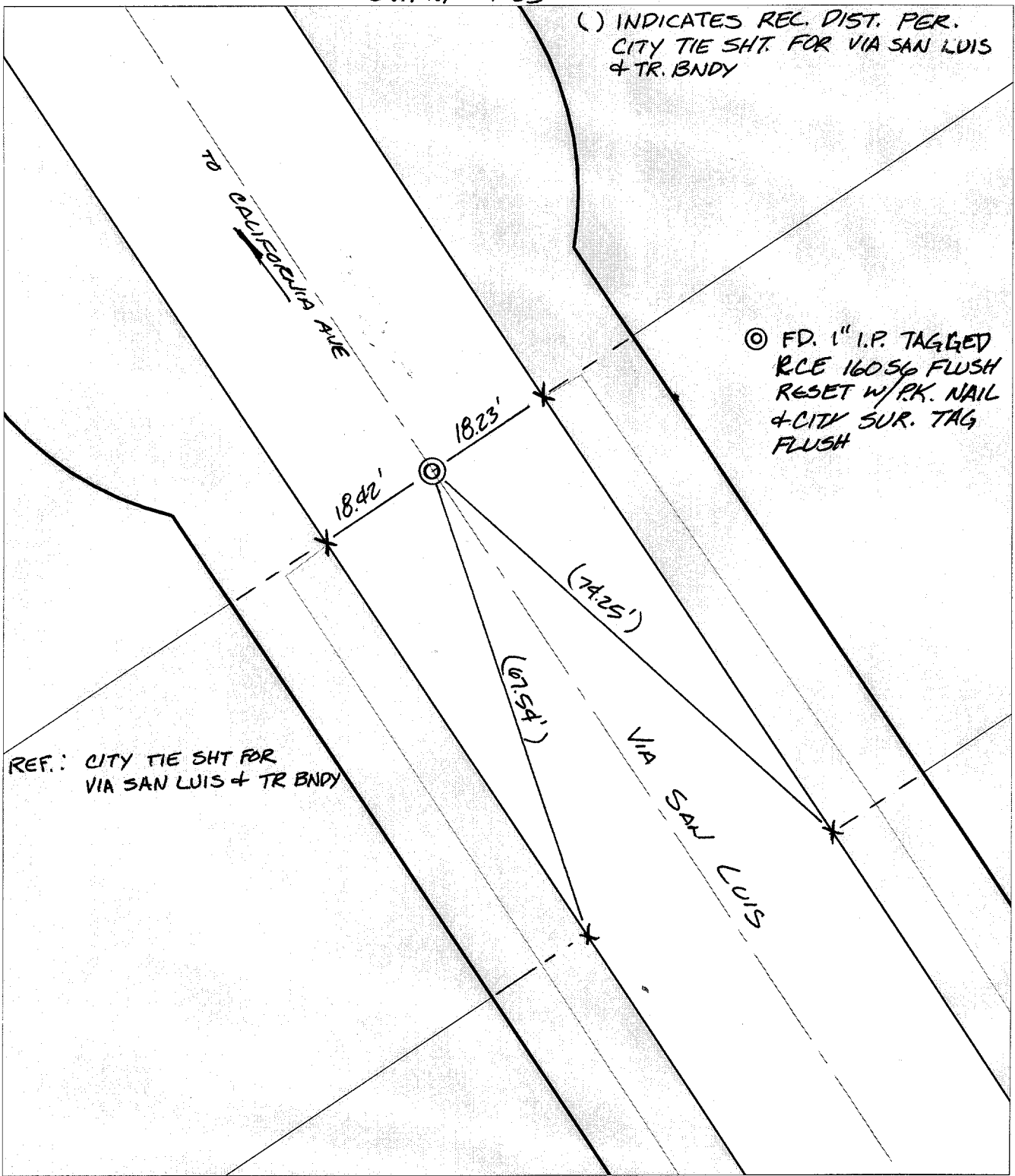
TRACT BOUNDARY

SWING TIES

( ) INDICATES REC. DIST. PER. CITY TIE SHT. FOR VIA SAN LUIS + TR. BNDY

⊙ FD. 1" I.P. TAGGED RCE 16056 FLUSH RESET W/P.K. NAIL + CITY SUR. TAG FLUSH

REF.: CITY TIE SHT FOR VIA SAN LUIS + TR BNDY



- ⊗ FD. Ramset Nail on T/C
- FD. LD. & TK. on T/C
- FD. "C" Nail on T/C
- Set LD. & TK. on T/C

P.K. and City Engineer tag to be set @ surface after street construction is complete. (If possible)

Scale: 1" = 20'  
 Date: 07/22/02  
 Drawn by: scurtis  
 F.B.:  
 TR-Sec: T3SR5W-5

## OFFICIAL TIE PLAT

### CITY OF RIVERSIDE

*These ties are for the purpose of perpetuating the found monumentation. No claim is made as to the relationship of the points or lines shown hereon to true boundary locations.*



Sheet 1 of 1  
 Cadme MB: 52-5