

C 10989.TIF

Street:

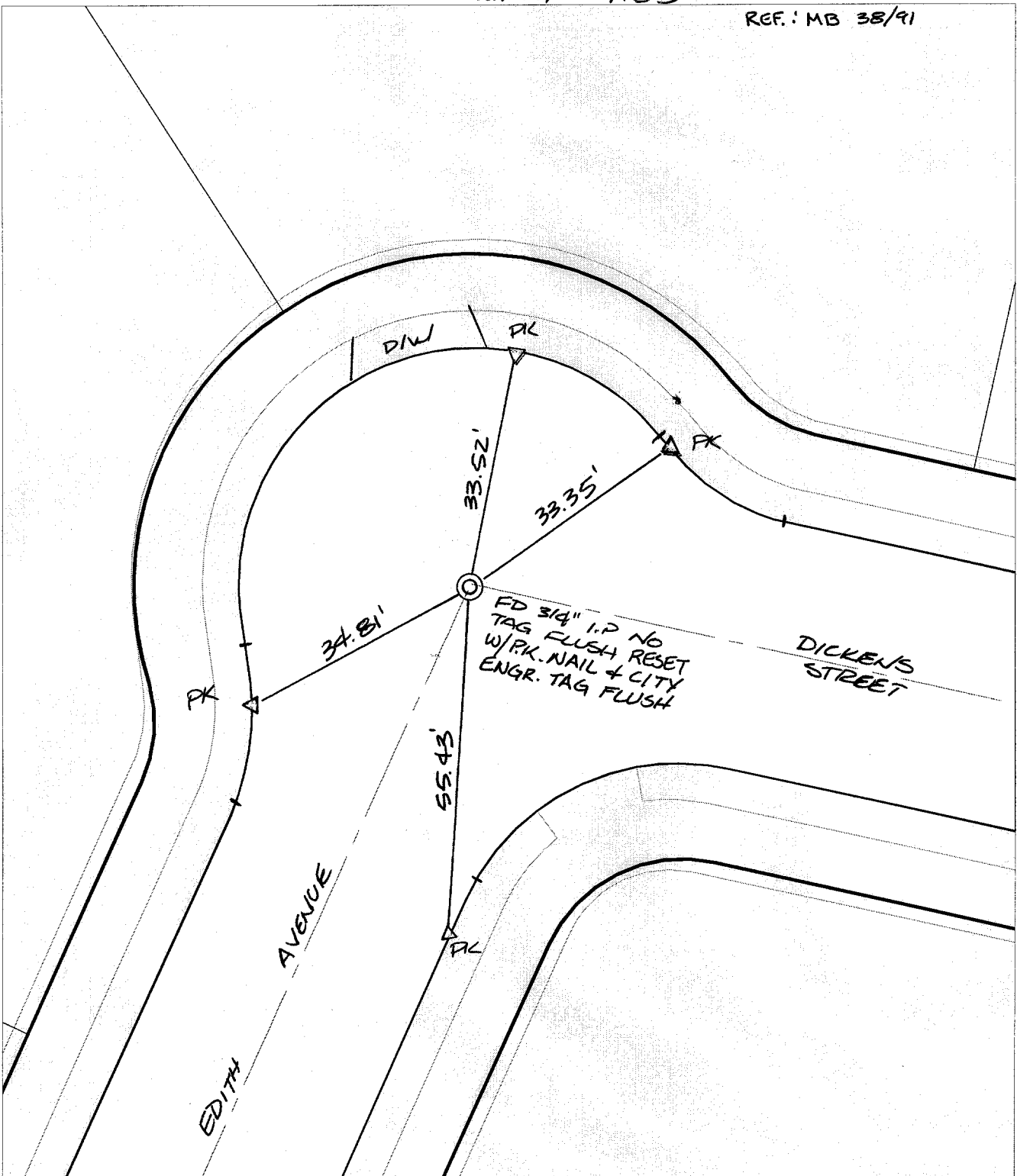
EDITH AVENUE

X-Street: OFFICIAL USE ONLY

DICKENS STREET

SWING TIES

REF.: MB 38/91



- ✕ FD. Ramset Nail on T/C    ● FD. LD. & TK. on T/C    P.K. and City Engineer tag to be set @ surface after street construction is complete. (If possible)
- FD. "C" Nail on T/C    ○ Set LD. & TK. on T/C

Scale: 1" = 20'  
 Date: 07/01/02  
 Drawn by: SURVEY  
 F.B.:  
 TR-Sec: T3SR5W-2

**OFFICIAL TIE PLAT**  
**CITY OF RIVERSIDE**

*These ties are for the purpose of perpetuating the found monumentation. No claim is made as to the relationship of the points or lines shown hereon to true boundary locations.*

Sheet 1 of 1  
 Cadme MB: 55-5