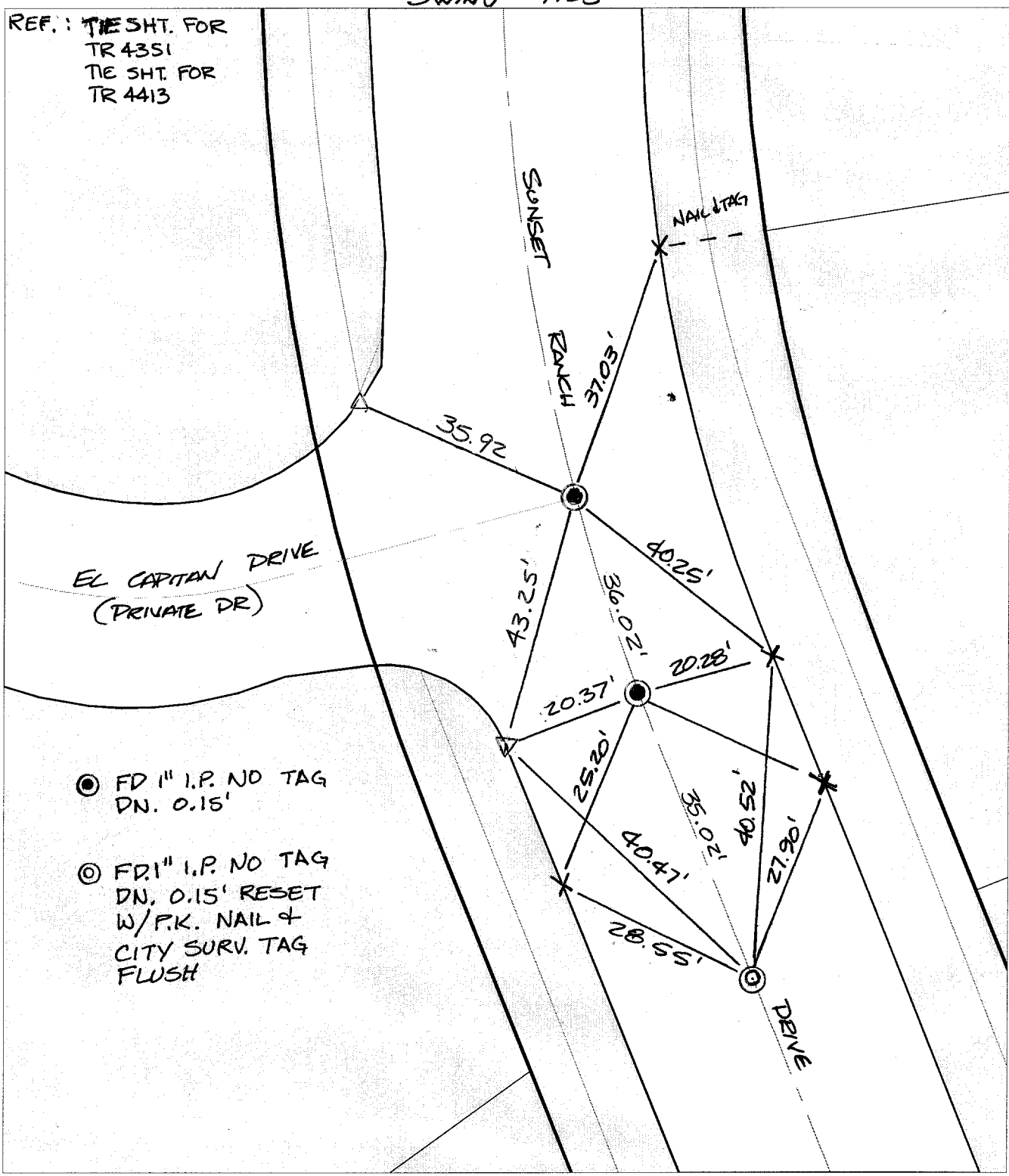


C109995.TIF

Street: SUNSET RANCH DRIVE
X-Street: EL CAPITAN DRIVE
OFFICIAL USE ONLY

SWING TIES

REF.: THE SHT. FOR
TR 4351
TIE SHT. FOR
TR 4413



- FD 1" I.P. NO TAG
DN. 0.15'
- FD 1" I.P. NO TAG
DN. 0.15' RESET
W/P.K. NAIL &
CITY SURV. TAG
FLUSH

✕ FD. Ramset Nail on T/C ● FD. LD. & TK. on T/C P.K. and City Engineer tag to be set @
 ■ FD. "C" Nail on T/C ○ Set LD. & TK. on T/C surface after street construction is
 complete. (If possible)

Scale: 1" = 20'
 Date: 07/01/02
 Drawn by: SURVEY
 F.B.:
 TR-Sec: T3SR5W-1

OFFICIAL TIE PLAT
CITY OF RIVERSIDE

These ties are for the purpose of perpetuating the found monumentation. No claim is made as to the relationship of the points or lines shown hereon to true boundary locations.



Sheet 1 of 1
 Cadme MB: 55-6