

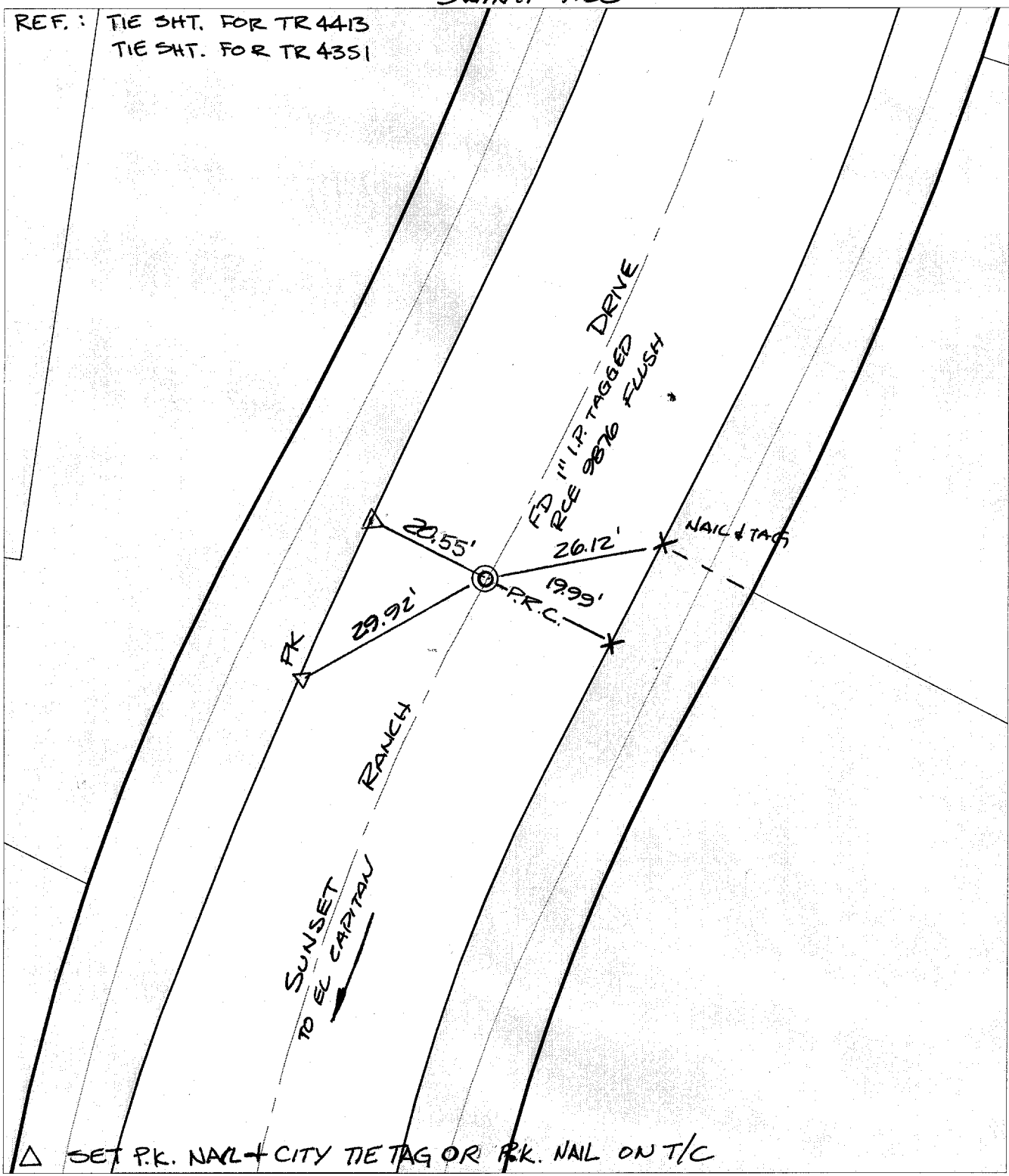
C109916.TIF

Street: SUNSET RANCH DRIVE X-Street: EC N / EL CAPITAN DRIVE

OFFICIAL USE ONLY

SWING TIES

REF.: TIE SHT. FOR TR 4413
TIE SHT. FOR TR 4351



△ SET P.K. NAIL + CITY TIE TAG OR P.K. NAIL ON T/C

- × FD. Ramset Nail on T/C
 - FD. LD. & TK. on T/C
 - FD. "C" Nail on T/C
 - Set LD. & TK. on T/C
- P.K. and City Engineer tag to be set @ surface after street construction is complete. (If possible)

Scale: 1" = 20'

Date: 07/01/02

Drawn by: SURVEY

F.B.:

TR-Sec: T3SR5W-1

OFFICIAL TIE PLAT

CITY OF RIVERSIDE

These ties are for the purpose of perpetuating the found monumentation. No claim is made as to the relationship of the points or lines shown hereon to true boundary locations.



Sheet 1 of 1

Cadme MB: 55-6