

C11004.TIF

Street:

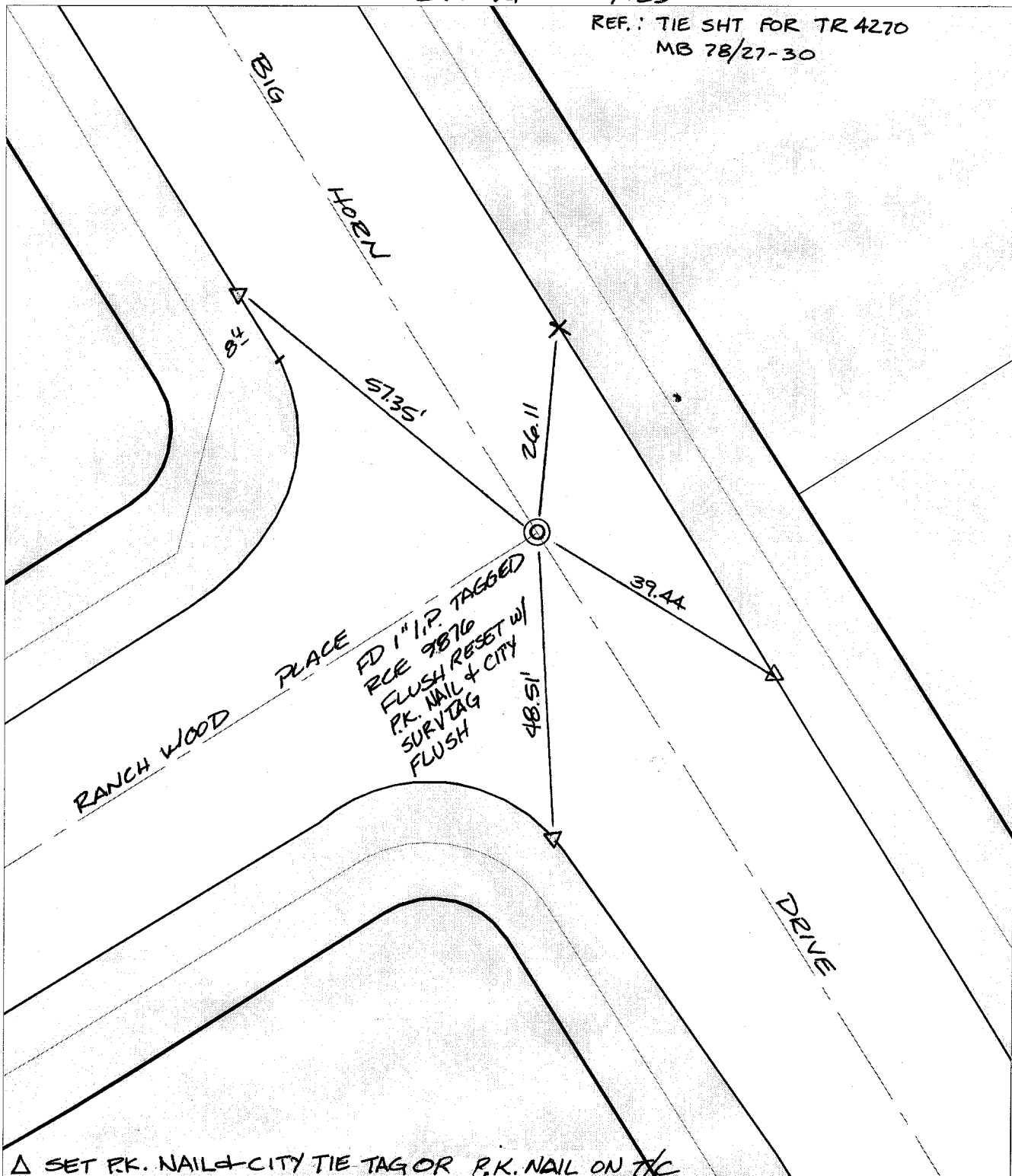
BIG HORN DRIVE

X-Street:
OFFICIAL USE ONLY

RANCHWOOD PLACE

SWING TIES

REF.: TIE SHT FOR TR 4270
MB 78/27-30



△ SET P.K. NAIL + CITY TIE TAG OR P.K. NAIL ON T/C

- × FD. Ramset Nail on T/C ● FD. LD. & TK. on T/C
- FD. "C" Nail on T/C ○ Set LD. & TK. on T/C

P.K. and City Engineer tag to be set @ surface after street construction is complete. (If possible)

Scale: 1" = 20'

Date: 07/01/02

Drawn by: scurtis

F.B.:

TR-Sec: T3SR5W-1

OFFICIAL TIE PLAT

CITY OF RIVERSIDE

These ties are for the purpose of perpetuating the found monumentation. No claim is made as to the relationship of the points or lines shown hereon to true boundary locations.



Sheet 1 of 1

Cadme MB: 55-6