

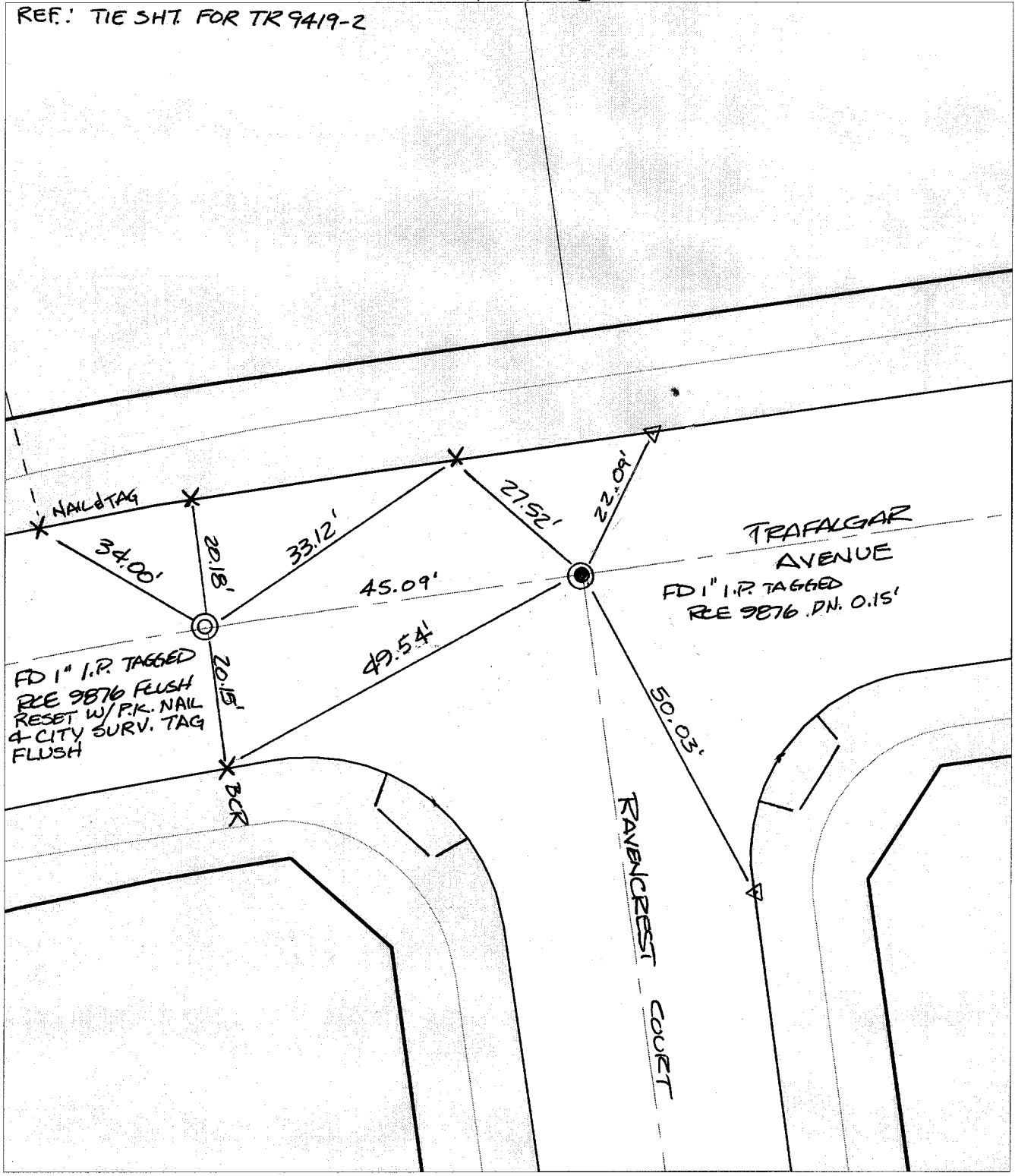
C11008.TIF

Street: TRAFALGAR AVENUE

X-Street: RAVENCREST COURT  
OFFICIAL USE ONLY

SWING TIES

REF.: TIE SH1 FOR TR 9419-2



✕ FD. Ramset Nail on T/C    ● FD. LD. & TK. on T/C    P.K. and City Engineer tag to be set @ surface after street construction is complete. (If possible)  
 ■ FD. "C" Nail on T/C    ○ Set LD. & TK. on T/C

Scale: 1" = 20'  
 Date: 07/01/02  
 Drawn by: SURVEY  
 F.B.:  
 TR-Sec: T3SR5W-1

**OFFICIAL TIE PLAT**  
CITY OF RIVERSIDE

*These ties are for the purpose of perpetuating the found monumentation. No claim is made as to the relationship of the points or lines shown hereon to true boundary locations.*



Sheet 1 of 1  
 Cadme MB: 55-8