

Street:

FALLING OAK DRIVE

X-Street:

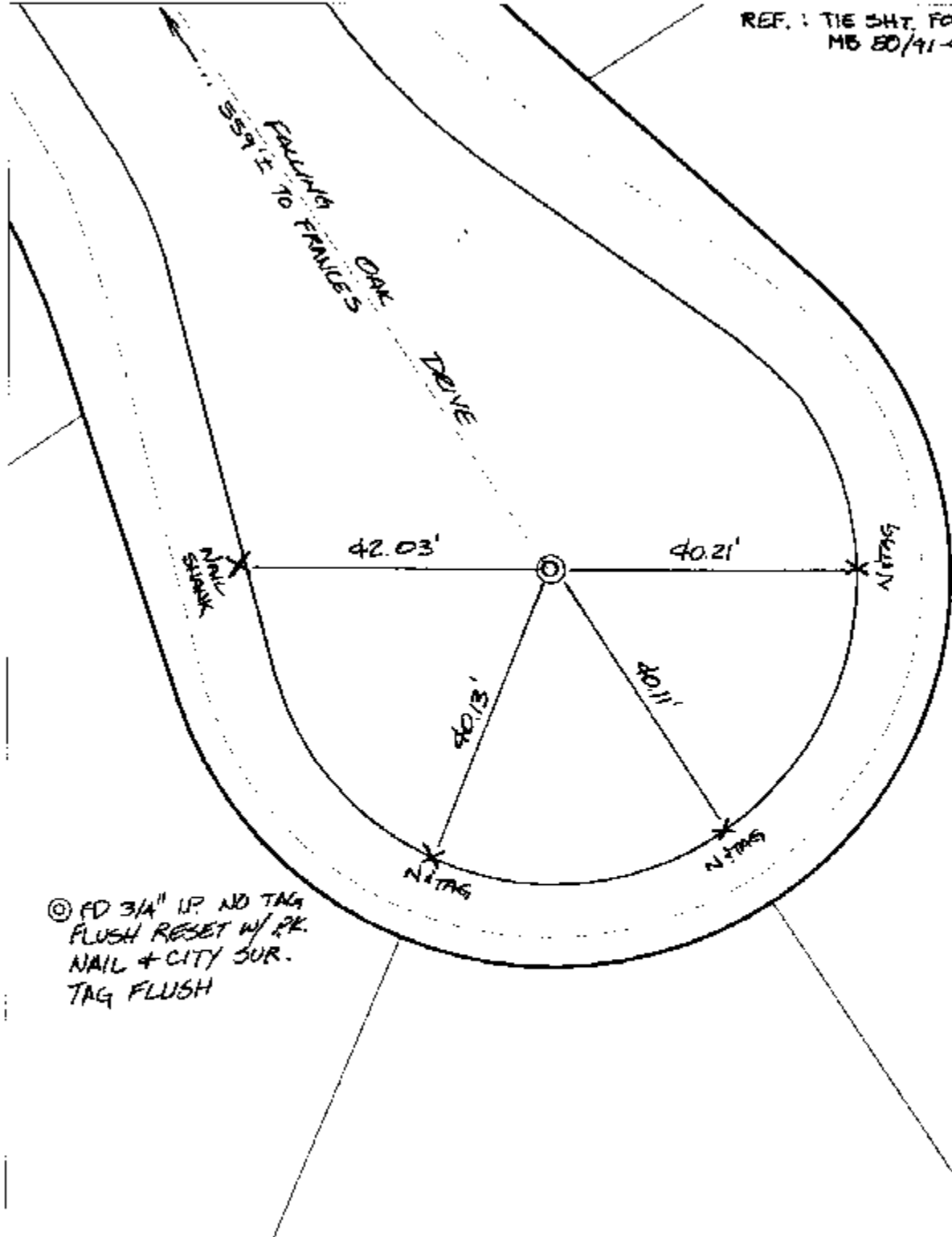
CUL-DE-SAC

OFFICIAL USE ONLY

REF.: TIE SH. FOR TR5913  
MB 80/41-44

SWING TIES

FALLING OAK DRIVE  
FRANCIS DRIVE



© FD 3/4" IP NO TAG  
FLUSH RESET W/ PK.  
NAIL + CITY SUR.  
TAG FLUSH

- ✕ FD. Ramset Nail on T/C
- FD. LD. & TK. on T/C
- FD. "C" Nail on T/C
- Set LD. & TK. on T/C

P.K. and City Engineer tag to be set @  
surface after street construction is  
complete. (If possible)

Scale: 1" = 20'

Date: 07/01/02

Drawn by: SURVEY

F.B.:

TR-Sec: T3SR5W-11

## OFFICIAL TIE PLAT

### CITY OF RIVERSIDE

*These ties are for the purpose of perpetuating the found  
monumentation. No claim is made as to the relationship of  
the points or lines shown hereon to true boundary locations.*



Sheet 1 of 1  
Cadme MB: 69-3