

11390.TIF

Street:

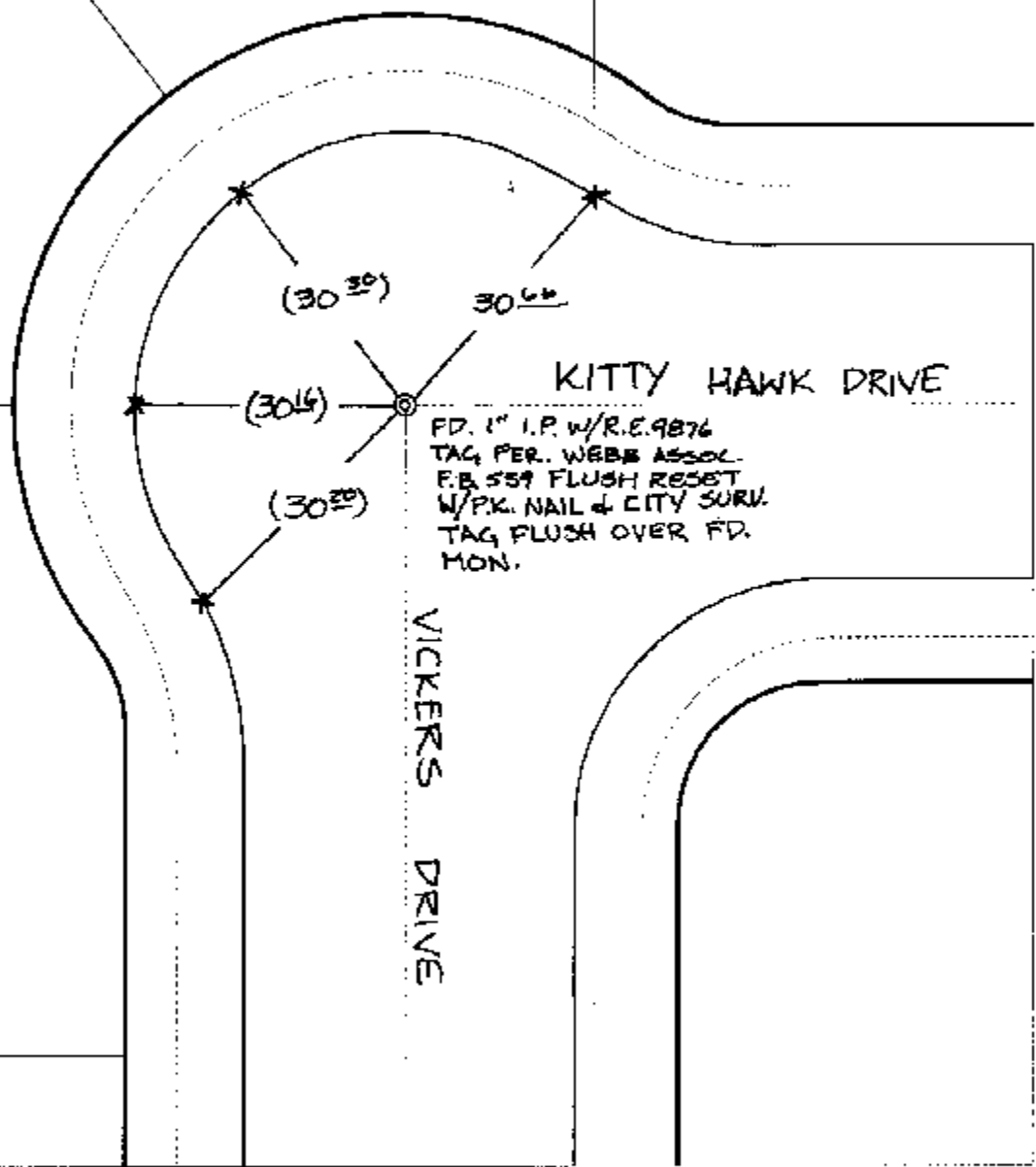
KITTY HAWK DRIVE

X-Street:
OFFICIAL USE ONLY

VICKERS DRIVE

REF. WEBB ASSOC. FB 559 SWING TIES

(1) - REC. DIST. PER. WEBB ASSOC. FB. 559



FD. 1" I.P. W/R.E. 9876
TAG PER. WEBB ASSOC.
F.B. 559 FLUSH RESET
W/PK. NAIL & CITY SURV.
TAG FLUSH OVER FD.
MON.

- ✕ FD. Ramset Nail on T/C
- FD. LD. & TK. on T/C
- FD. "C" Nail on T/C
- Set LD. & TK. on T/C

P.K. and City Engineer tag to be set @ surface after street construction is complete. (if possible)

Scale: 1" = 20'
 Date: 05/09/02
 Drawn by: L.HARRIS
 F.B.:
 TR-Sec: T2SR5W-32

OFFICIAL TIE PLAT

CITY OF RIVERSIDE

These ties are for the purpose of perpetuating the found monumentation. No claim is made as to the relationship of the points or lines shown hereon to true boundary locations.



Sheet 1 of 1
 Cadme MB: 51-2