

Street:

RANCHO DRIVE

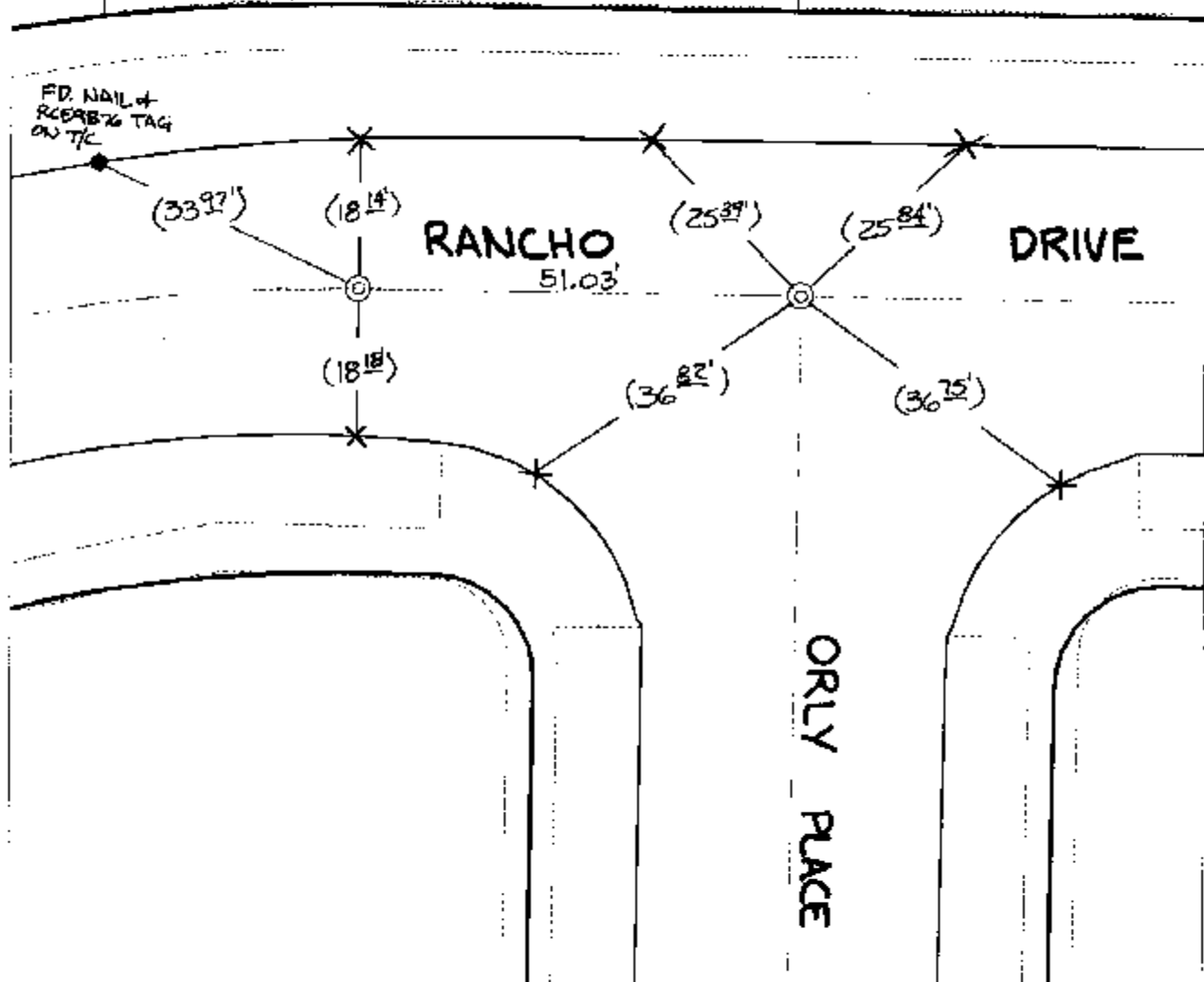
X-Street:
OFFICIAL USE ONLY

ORLY PLACE

TRANSIT + SWING TIES

⊙ - FD 3/4" I.P. W/RCE 9876
TAG FLUSH PER. WEBB
ASSOC. FB 1027/15.
RESET W/PK. NAIL +
CITY ENGR. TAG FLUSH
OVER FD. MON.

REF.: WEBB ASSOC. FB1027/15



- ✕ FD. Ramset Nail on T/C
 - FD. LD. & TK. on T/C
 - Set LD. & TK. on T/C
 - FD. "C" Nail on T/C
- P.K. and City Engineer tag to be set @ surface after street construction is complete. (if possible)*

Scale: 1" = 20'

Date: 03/06/03

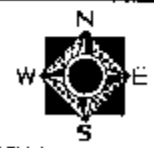
Drawn by: SURVEY

F.B.:

TR-Sec: T2SR5W-25

OFFICIAL TIE PLAT
CITY OF RIVERSIDE

These ties are for the purpose of perpetuating the found monumentation. No claim is made as to the relationship of the points or lines shown hereon to true boundary locations.



Sheet 1 of 1
Cadme MB: 40-5