

11394.TIF

Street: MAC BETH PLACE

X-Street: PRINCE ALBERT DRIVE
OFFICIAL USE ONLY

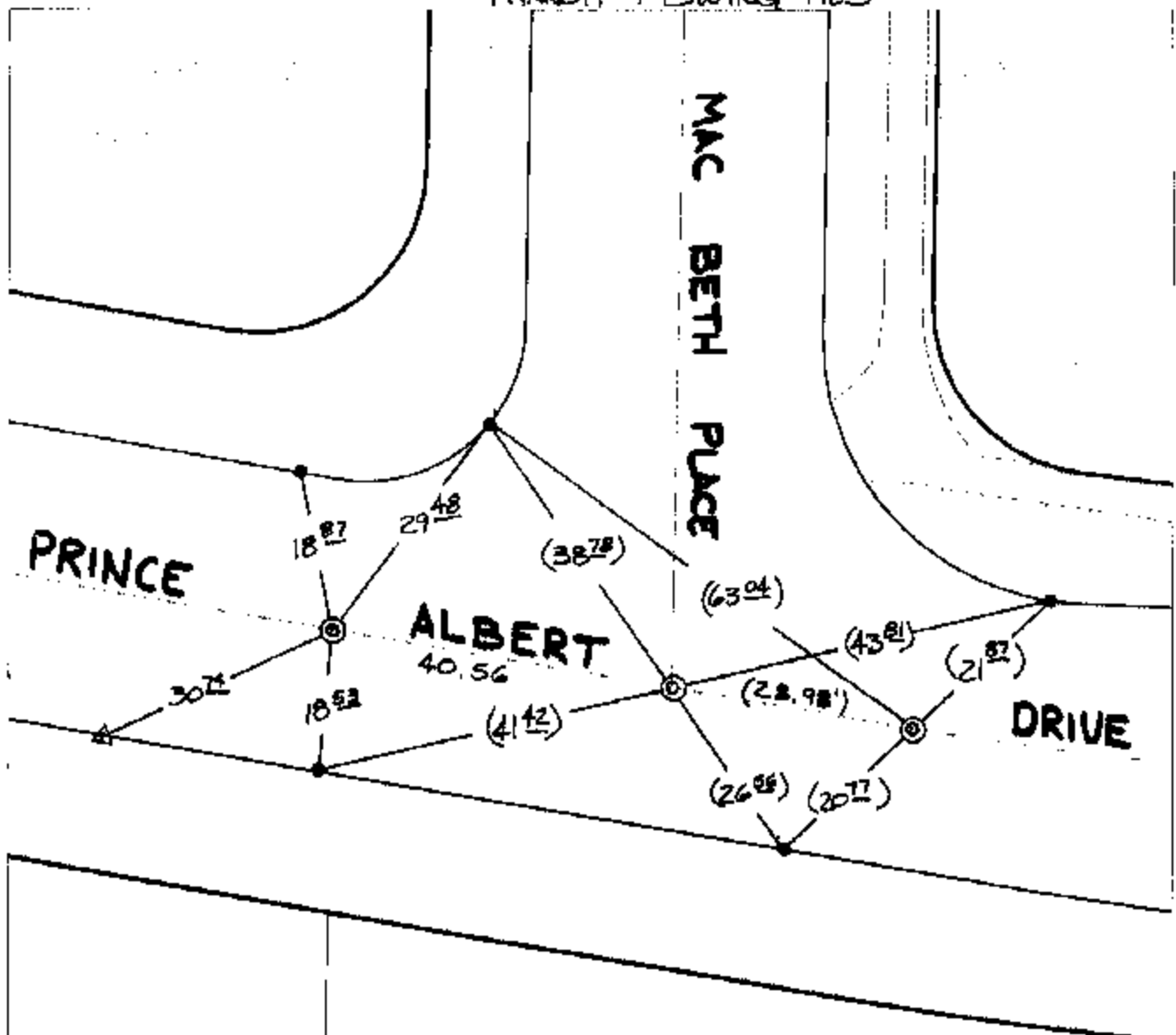
TRANSIT & SWING TIES

MAC BETH PLACE

PRINCE

ALBERT

DRIVE



⊗ FD 3/4" LP. NO TAG
 RESET W/PK. NAIL
 & CITY ENGR. TAG
 FLUSH OVER FD.
 MON.

REF.: CITY TIE SH. T.
 FOR THE INT.
 OF PRINCE ALBERT
 DRIVE & MAC BETH
 PLACE

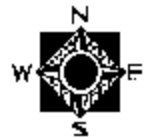
- ⊗ FD. Ramset Nail on T/C
- FD. LD. & TK. on T/C
- FD. "C" Nail on T/C
- Set LD. & TK. on T/C

P.K. and City Engineer tag to be set @
 surface after street construction is
 complete. (if possible)

Scale: 1" = 20'
 Date: 03/06/03
 Drawn by: SURVEY
 F.B.:
 TR-Sec: T2SR5W-25

OFFICIAL TIE PLAT
 CITY OF RIVERSIDE

*These ties are for the purpose of perpetuating the found
 monumentation. No claim is made as to the relationship of
 the points or lines shown hereon to true boundary locations.*



Sheet 1 of 1
 Cadme MB: 40-6