

1901.TIF

Street:

ALDRICH COURT

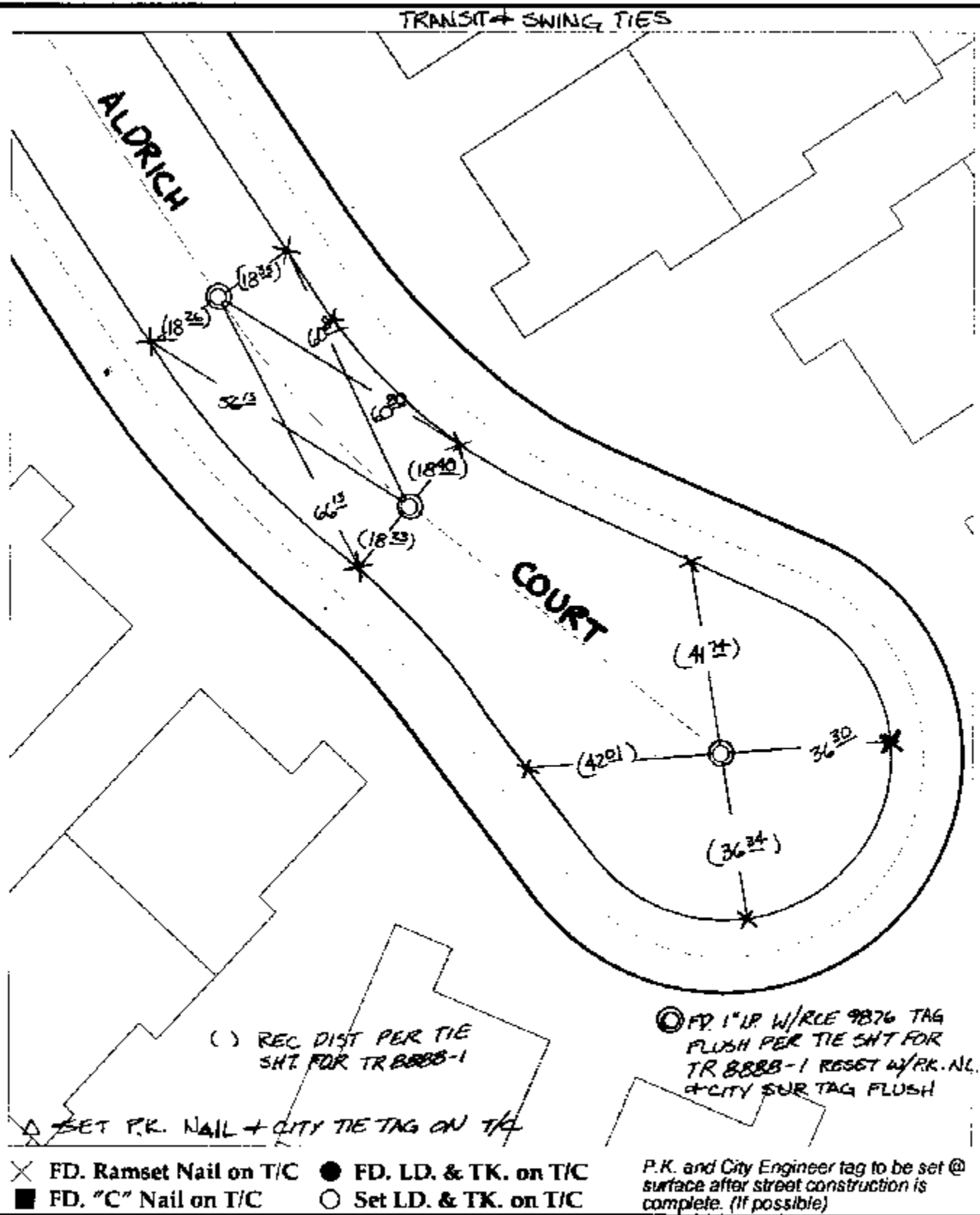
X-Street:
OFFICIAL USE ONLY

CUL-DE-SAC

TRANSIT + SWING TIES

ALDRICH

COURT



() REC DIST PER TIE SHI FOR TR 8888-1

◎ FD. 1" IP W/RLE 9876 TAG FLUSH PER TIE SHI FOR TR 8888-1 RESET W/PK.NL. CITY SUR TAG FLUSH

△ SET P.K. NAIL + CITY TIE TAG ON T/C

- ✕ FD. Ramset Nail on T/C
- FD. LD. & TK. on T/C
- FD. "C" Nail on T/C
- Set LD. & TK. on T/C

P.K. and City Engineer tag to be set @ surface after street construction is complete. (if possible)

Scale: 1" = 30'

Date: 09/27/02

Drawn by: SURVEY

F.B.:

TR-Sec: T3SR5W-6

OFFICIAL TIE PLAT

CITY OF RIVERSIDE



These ties are for the purpose of perpetuating the found monumentation. No claim is made as to the relationship of the points or lines shown hereon to true boundary locations.

Sheet 1 of 1
Cadme MB: 65-2