

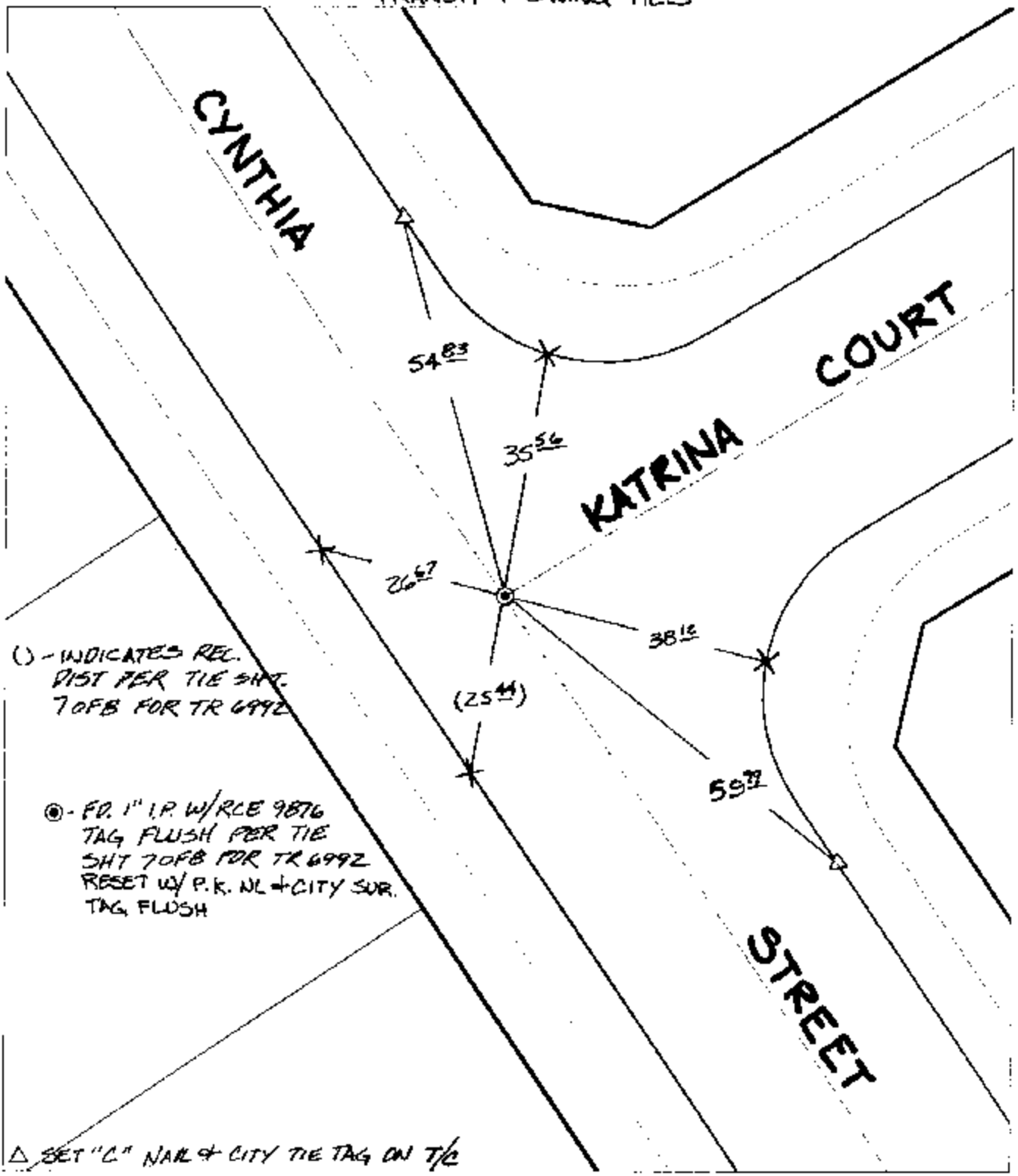
Street:

CYNTHIA STREET

X-Street:  
OFFICIAL USE ONLY

KATRINA COURT

TRANSIT + SWING TIES



△ - INDICATES REL. DIST PER TIE SH. 7 OF B FOR TR 6992

● - FD. 1" I.P. W/RCE 9876 TAG FLUSH PER TIE SH. 7 OF B FOR TR 6992 RESET W/ P.K. NL + CITY SUR. TAG FLUSH

△ SET "C" NAIL & CITY TIE TAG ON T/C

- × FD. Ramset Nail on T/C
- FD. LD. & TK. on T/C
- FD. "C" Nail on T/C
- Set LD. & TK. on T/C

P.K. and City Engineer tag to be set @ surface after street construction is complete. (if possible)

Scale: 1" = 20'  
 Date: 09/30/02  
 Drawn by: SURVEY  
 F.B.:  
 TR-Sec: T3SR6W-14

**OFFICIAL TIE PLAT**  
**CITY OF RIVERSIDE**

*These ties are for the purpose of perpetuating the found monumentation. No claim is made as to the relationship of the points or lines shown hereon to true boundary locations.*



Sheet 1 of 1  
 Cadme MB: 64-8