

11404-TIE

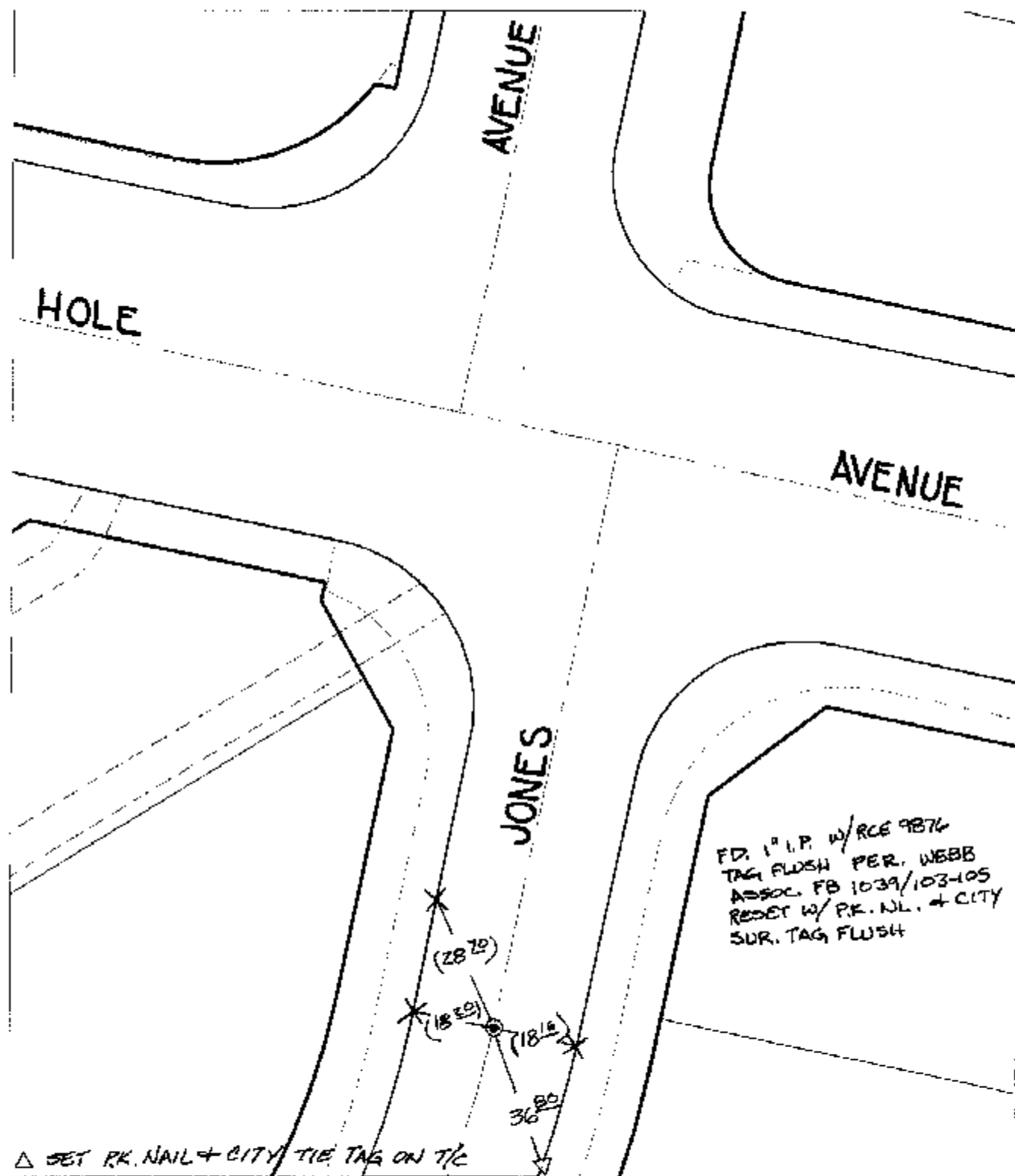
Street:

HOLE AVENUE

OFFICIAL USE ONLY

X-Street:

JONES AVENUE



△ SET PK. NAIL + CITY TIE TAG ON T/C

- × FD. Ramset Nail on T/C    ● FD. LD. & TK. on T/C
- FD. "C" Nail on T/C      ○ Set LD. & TK. on T/C

P.K. and City Engineer tag to be set @ surface after street construction is complete. (if possible)

Scale: 1" = 30'

Date: 09/30/02

Drawn by: SURVEY

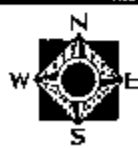
F.B.:

TR-Sec: T3SR6W-11

## OFFICIAL TIE PLAT

### CITY OF RIVERSIDE

*These ties are for the purpose of perpetuating the found monumentation. No claim is made as to the relationship of the points or lines shown hereon to true boundary locations.*



Sheet 1 of 1

Cadme MB: 64-8