

11405.T1E

Street:

JONES AVENUE

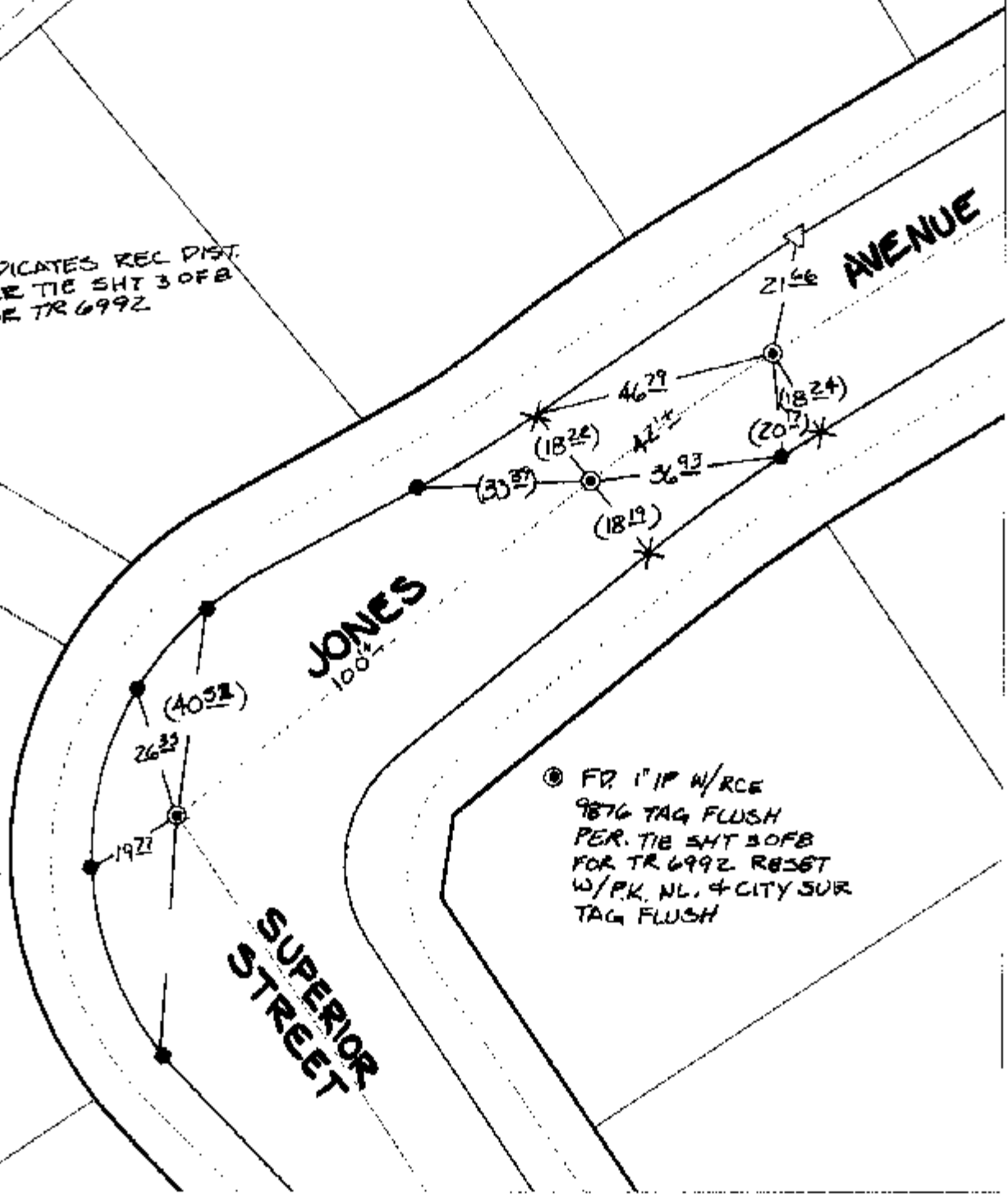
X-Street:
OFFICIAL USE ONLY

SUPERIOR STREET

SWING TIES

REF: TR 6992 TIE SHT 3 OF 8

(L) INDICATES REC DIST.
PER TIE SHT 3 OF 8
FOR TR 6992



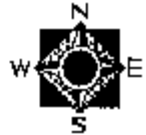
- ✕ FD. Ramset Nail on T/C ● FD. LD. & TK. on T/C P.K. and City Engineer tag to be set @ surface after street construction is complete. (if possible)
- FD. "C" Nail on T/C ○ Set LD. & TK. on T/C

Scale: 1" = 30'
 Date: 09/30/02
 Drawn by: SURVEY
 F.B.:
 TR-Sec: T3SR6W-11

OFFICIAL TIE PLAT

CITY OF RIVERSIDE

These ties are for the purpose of perpetuating the found monumentation. No claim is made as to the relationship of the points or lines shown hereon to true boundary locations.



Sheet 1 of 1
 Cadme MB: 64-7