

11906.TIF

Street:

ROSE AVENUE

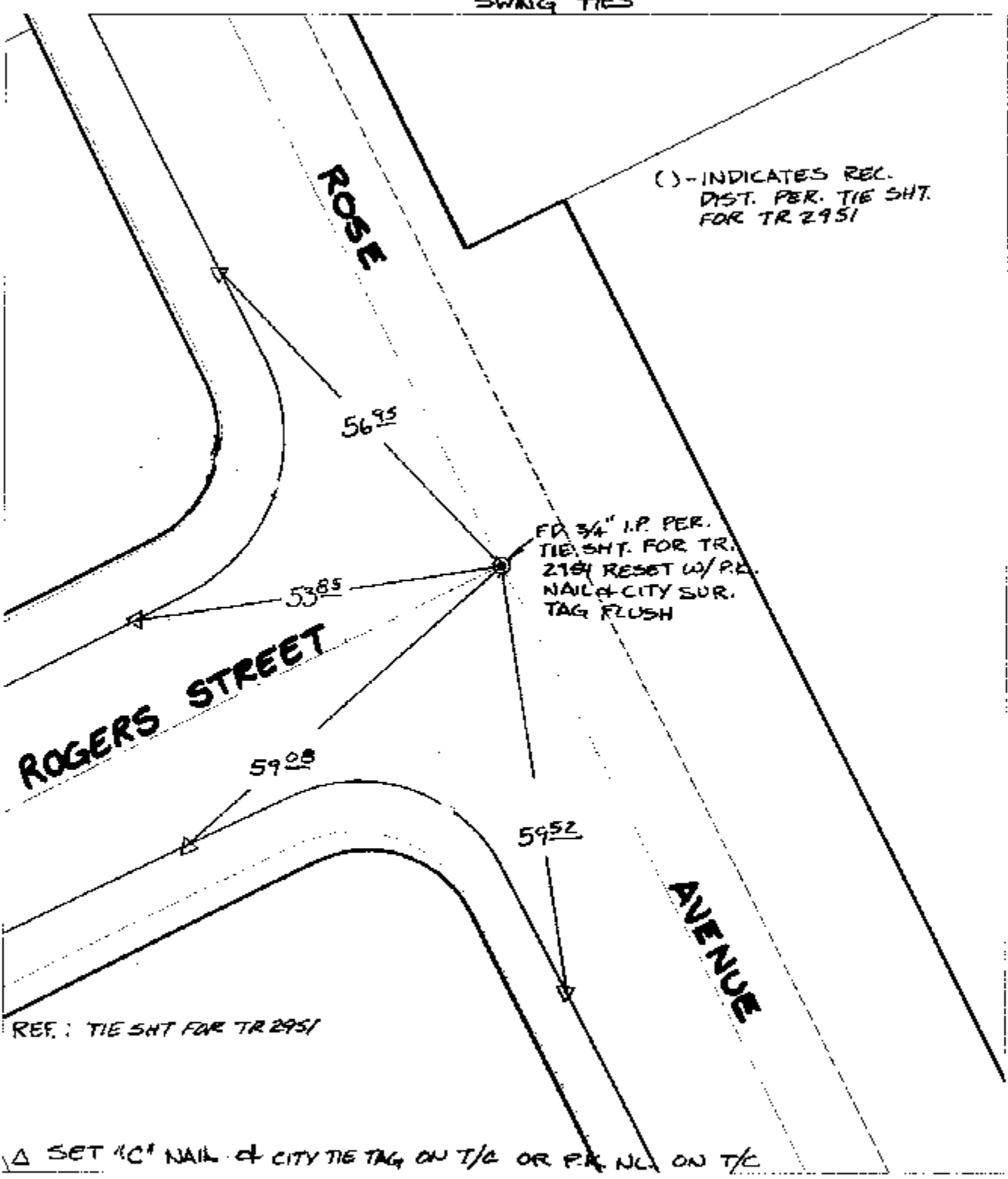
X-Street:
OFFICIAL USE ONLY

ROGERS STREET

SWING TIES

() - INDICATES REC.
DIST. PER. TIE SHT.
FOR TR 2951

FD 3/4" I.P. PER.
TIE SHT. FOR TR.
2164 RESET W/ P.K.
NAIL & CITY SUR.
TAG FLUSH



REF.: TIE SHT FOR TR 2951

△ SET "C" NAIL & CITY TIE TAG ON T/C OR P.K. NAIL ON T/C

- × FD. Ramset Nail on T/C ● FD. LD. & TK. on T/C P.K. and City Engineer tag to be set @ surface after street construction is complete. (if possible)
- FD. "C" Nail on T/C ○ Set LD. & TK. on T/C

Scale: 1" = 20'

Date: 09/30/02

Drawn by: SURVEY

F.B.:

TR-Sec: T3SR6W-10

OFFICIAL TIE PLAT

CITY OF RIVERSIDE

These ties are for the purpose of perpetuating the found monumentation. No claim is made as to the relationship of the points or lines shown hereon to true boundary locations.



Sheet 1 of 1

Cadme MB: 63-6