

11409.TIF

Street: HARRISON STREET X-Street: BELLA VISTA AVENUE  
OFFICIAL USE ONLY

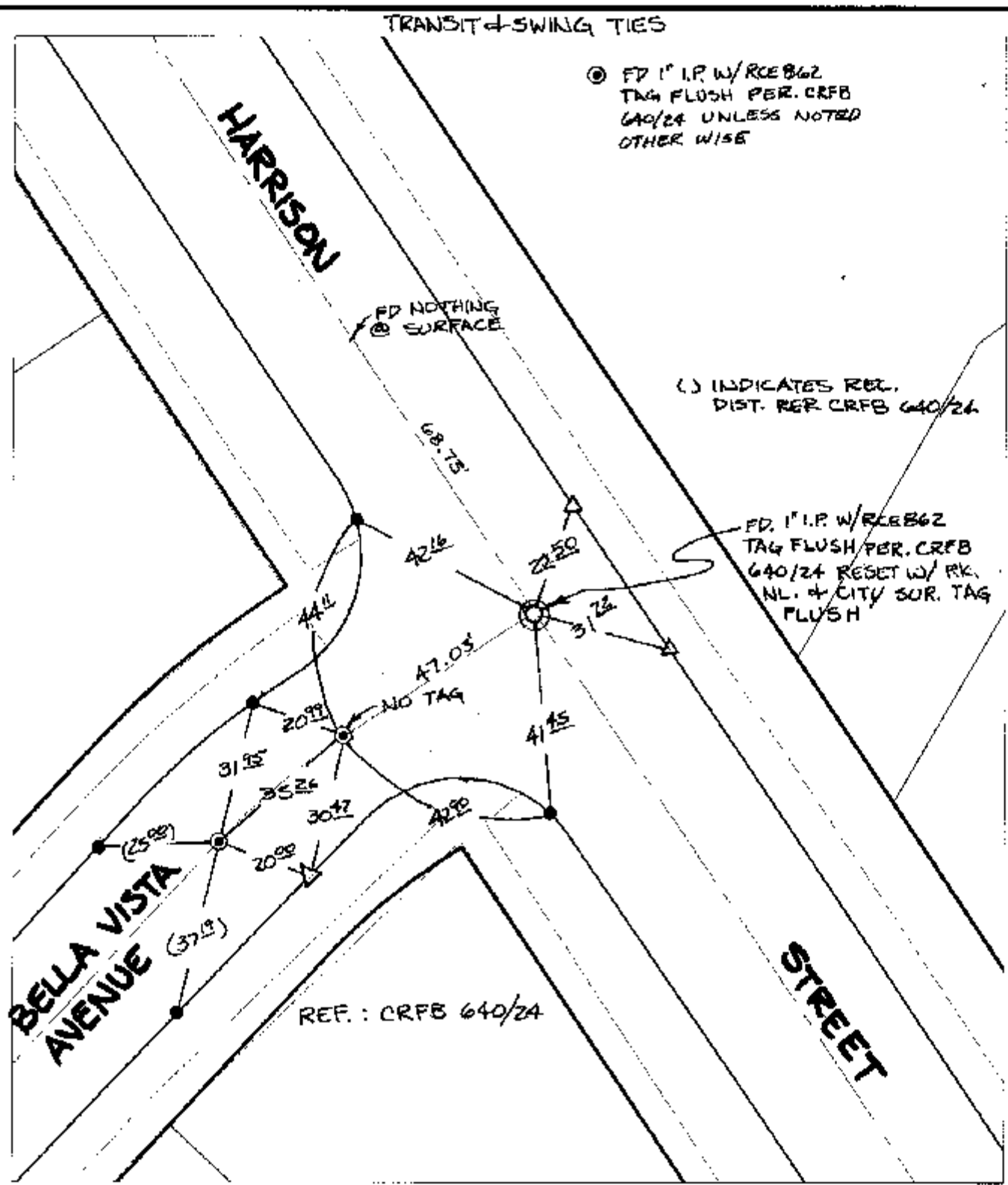
TRANSIT & SWING TIES

⊙ FD 1" I.P. W/ RCEB62 TAG FLUSH PER. CRFB 640/24 UNLESS NOTED OTHERWISE

FD NOTHING @ SURFACE

( ) INDICATES REG. DIST. REF. CRFB 640/24

FD 1" I.P. W/ RCEB62 TAG FLUSH PER. CRFB 640/24 RESET W/ PK. NL. + CITY SUR. TAG FLUSH

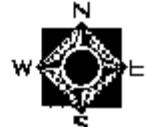


- ✕ FD. Ramset Nail on T/C      ● FD. LD. & TK. on T/C      P.K. and City Engineer tag to be set @ surface after street construction is complete. (if possible)
- FD. "C" Nail on T/C      ○ Set LD. & TK. on T/C

Scale: 1" = 30'  
 Date: 09/30/02  
 Drawn by: SURVEY  
 F.B.:  
 TR-Sec: T3SR5W-18

**OFFICIAL TIE PLAT**  
 CITY OF RIVERSIDE

*These ties are for the purpose of perpetuating the found monumentation. No claim is made as to the relationship of the points or lines shown hereon to true boundary locations.*



Sheet 1 of 1  
 Cadme MB: 81-3