

11448.TIF

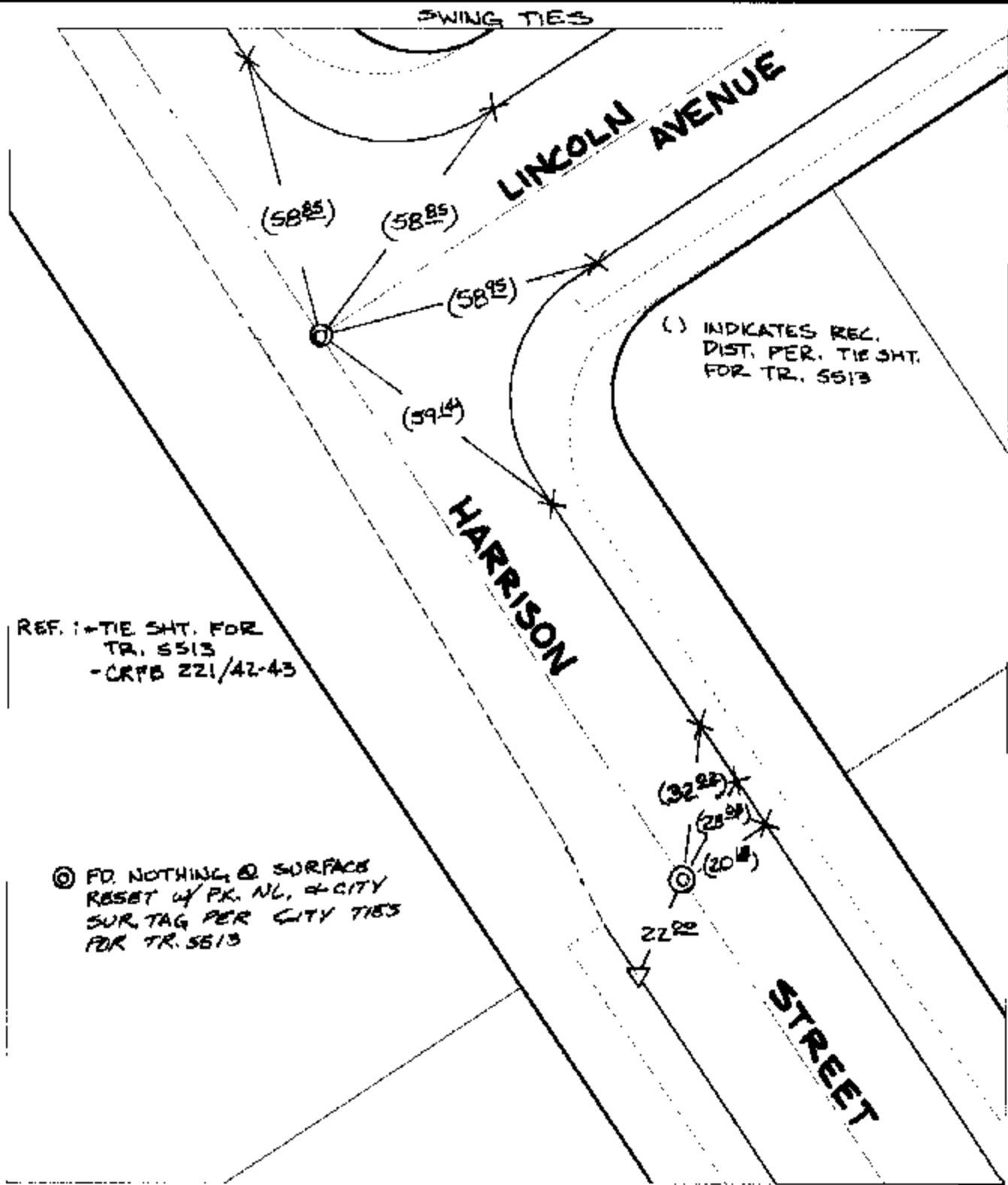
Street:

HARRISON STREET

X-Street:

LINCOLN AVENUE

OFFICIAL USE ONLY



() INDICATES REQ. DIST. PER. TIE SHOT FOR TR. 5513

REF. I-TIE SHOT FOR TR. 5513 - CRFB 221/42-43

⊙ FD. NOTHING @ SURFACE RESET w/ PK. NL. & CITY SUR. TAG PER CITY TIES FOR TR. 5513

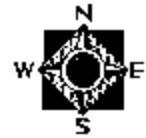
- ✕ FD. Ramset Nail on T/C
- FD. LD. & TK. on T/C
- FD. "C" Nail on T/C
- Set LD. & TK. on T/C

P.K. and City Engineer tag to be set @ surface after street construction is complete. (if possible)

Scale: 1" = 30'
 Date: 09/30/02
 Drawn by: SURVEY
 F.B.:
 TR-Sec: T3SR5W-18

OFFICIAL TIE PLAT

CITY OF RIVERSIDE



These ties are for the purpose of perpetuating the found monumentation. No claim is made as to the relationship of the points or lines shown hereon to true boundary locations.

Sheet 1 of 1
 Cadme MB: 81-3