

11449.TIF

Street:

HARRISON ST.

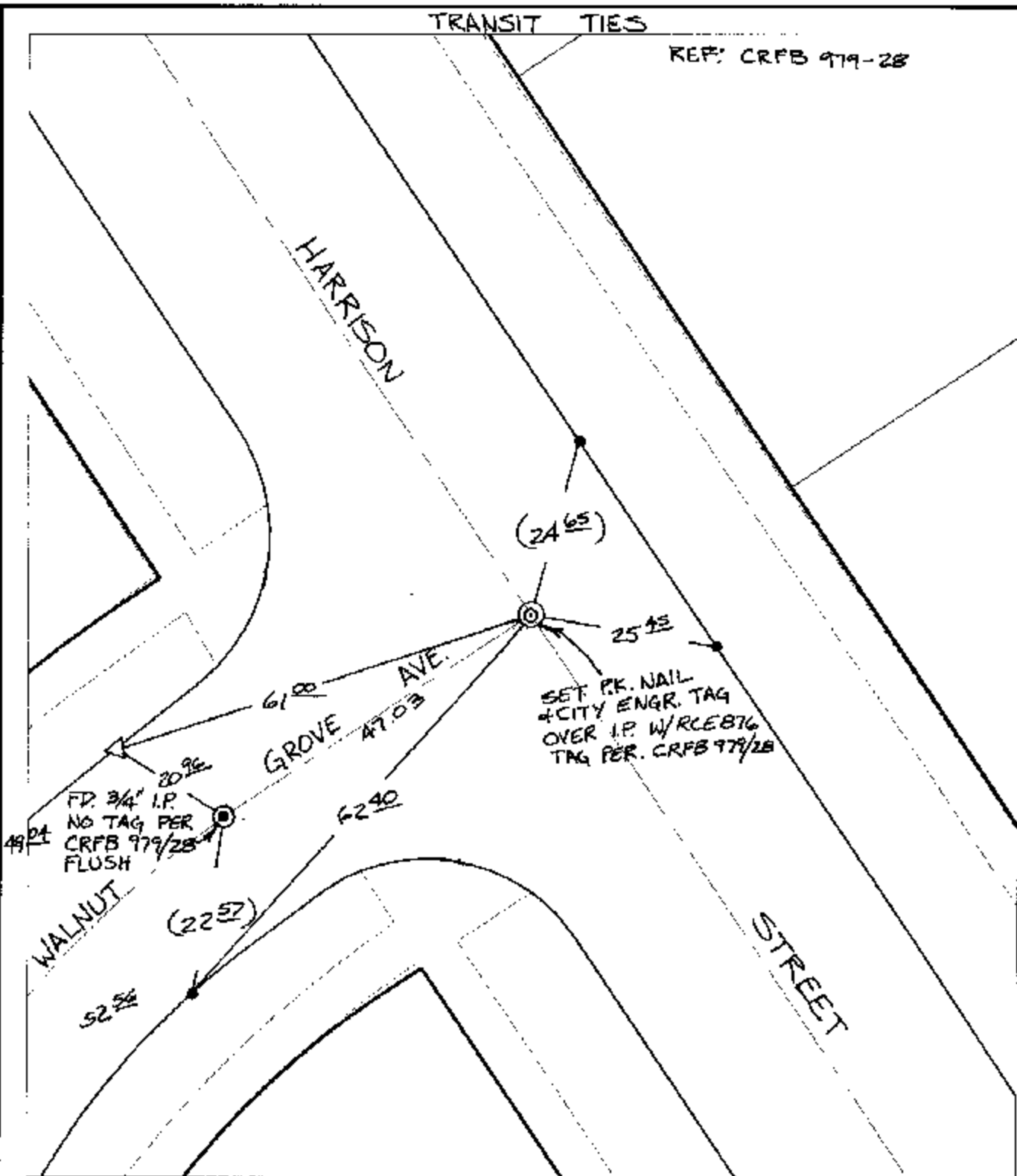
X-Street:

WALNUT GROVE AVE.

OFFICIAL USE ONLY

TRANSIT TIES

REF: CRFB 979-28



- ✕ FD. Ramset Nail on T/C      ● FD. LD. & TK. on T/C      P.K. and City Engineer tag to be set @ surface after street construction is complete. (If possible)
- FD. "C" Nail on T/C      ○ Set LD. & TK. on T/C

Scale: 1" = 20'

Date: 06/21/02

Drawn by: scurtis

F.B.:

TR-Sec: T3SR5W-18

## OFFICIAL TIE PLAT

### CITY OF RIVERSIDE

*These ties are for the purpose of perpetuating the found monumentation. No claim is made as to the relationship of the points or lines shown hereon to true boundary locations.*



Sheet 1 of 1

Cadme MB: 81-3