

11450.TIF

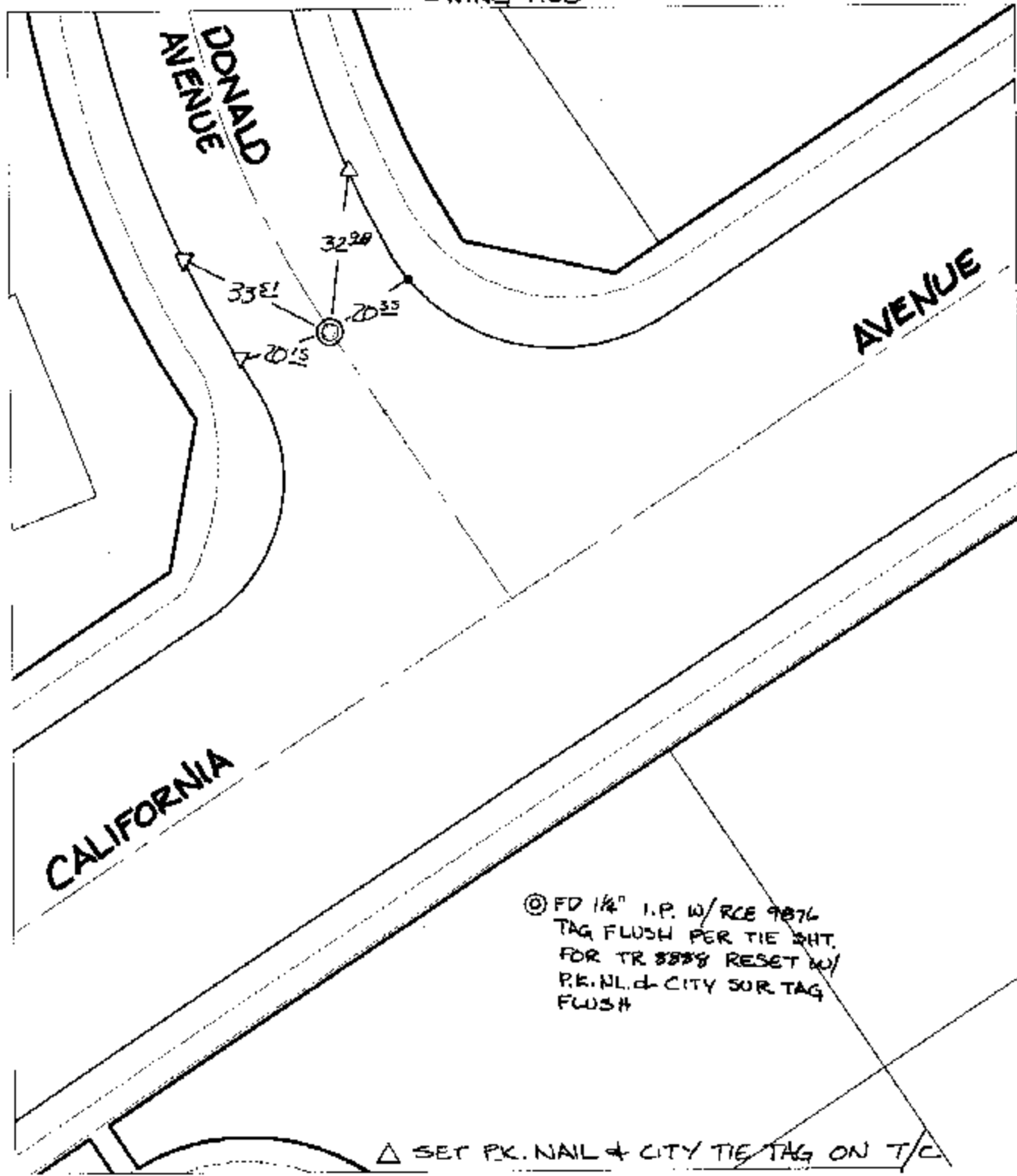
Street:

CALIFORNIA AVENUE

X-Street: OFFICIAL USE ONLY

DONALD AVENUE

SWING TIES



© FD 1/4" I.P. W/RCE 9876
TAG FLUSH PER TIE SH.
FOR TR 8888 RESET W/
P.K. NL. & CITY SUR TAG
FLUSH

△ SET P.K. NAIL & CITY TIE TAG ON T/C

- ✕ FD. Ramset Nail on T/C
- FD. LD. & TK. on T/C
- FD. "C" Nail on T/C
- Set LD. & TK. on T/C
- P.K. and City Engineer tag to be set @ surface after street construction is complete. (if possible)

Scale: 1" = 30'
Date: 08/20/02
Drawn by: SURVEY
F.B.:
TR-Sec: T3SR5W-7

OFFICIAL TIE PLAT

CITY OF RIVERSIDE

These ties are for the purpose of perpetuating the found monumentation. No claim is made as to the relationship of the points or lines shown hereon to true boundary locations.



Sheet 1 of 1
Cadme MB: 66-3