

11459.TIF

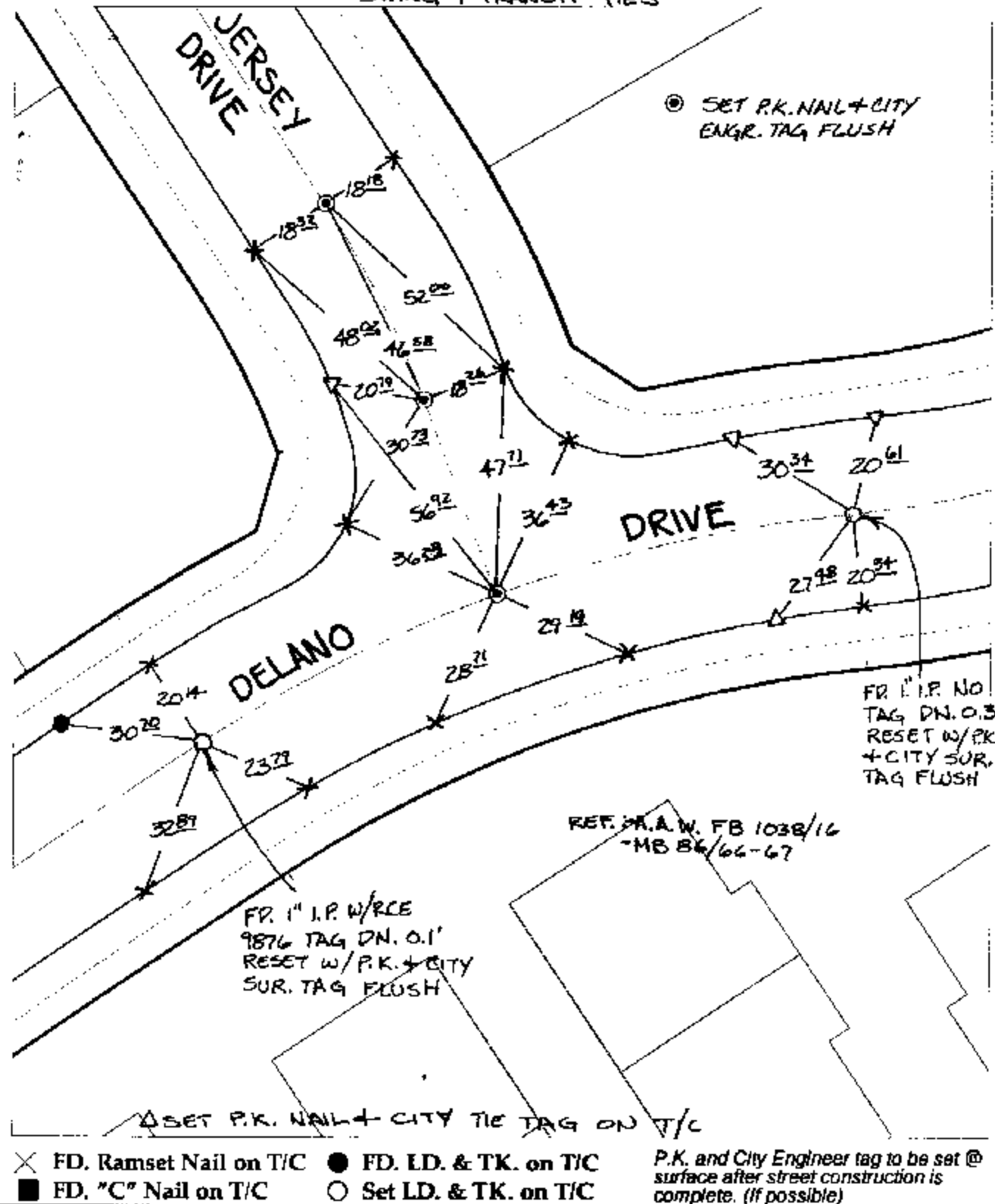
Street:

DELANO DRIVE

OFFICIAL USE ONLY X-Street:

JERSEY DRIVE

SWING + TRANSIT TIES



- ✕ FD. Ramset Nail on T/C
- FD. LD. & TK. on T/C
- FD. "C" Nail on T/C
- Set LD. & TK. on T/C

P.K. and City Engineer tag to be set @ surface after street construction is complete. (if possible)

Scale: 1" = 30'  
 Date: 09/27/02  
 Drawn by: SURVEY  
 F.B.:  
 TR-Sec: T3SR5W-6

## OFFICIAL TIE PLAT

### CITY OF RIVERSIDE

*These ties are for the purpose of perpetuating the found monumentation. No claim is made as to the relationship of the points or lines shown hereon to true boundary locations.*



Sheet 1 of 1  
 Cadme MB: 66-1