

11462.TIF

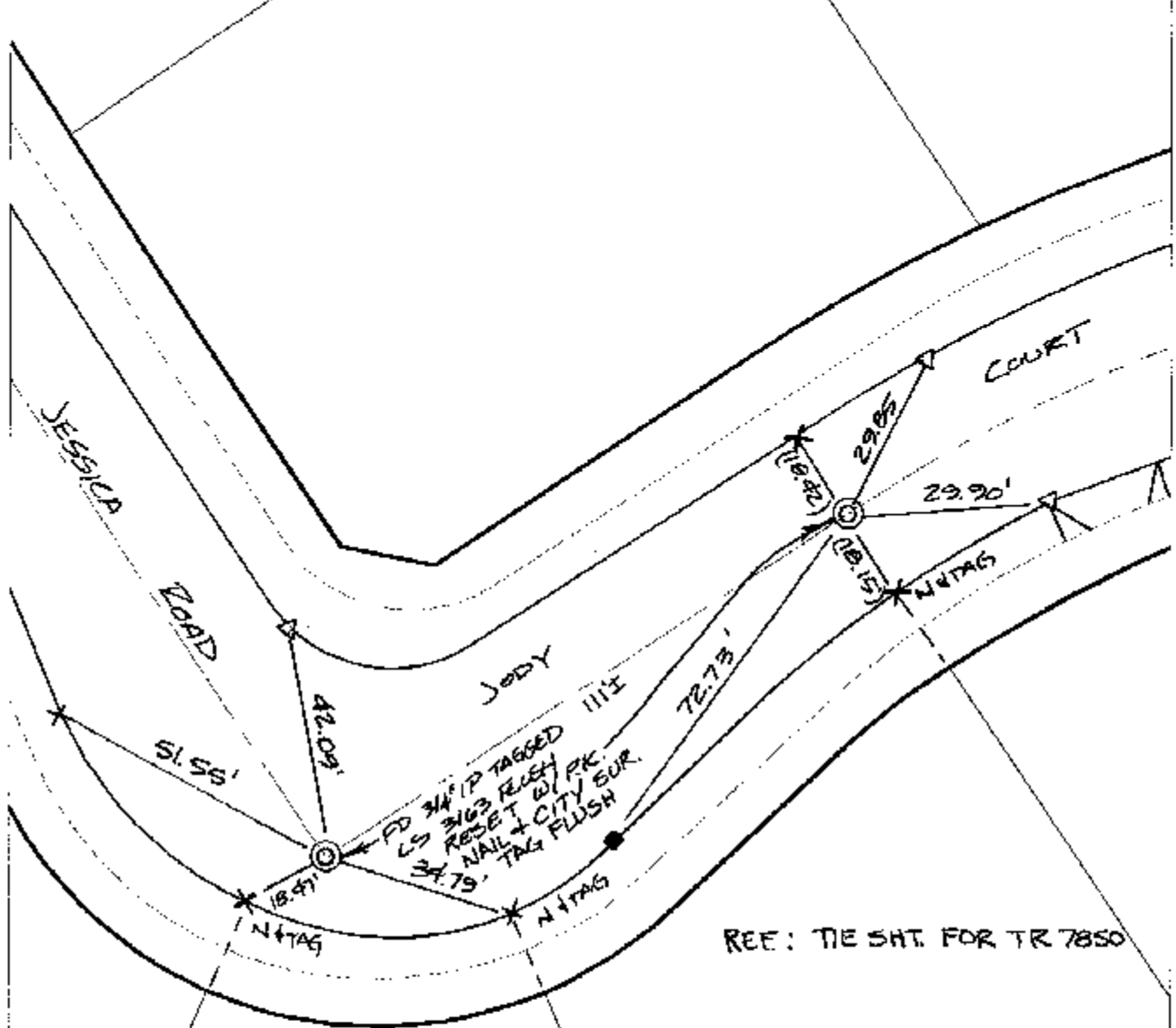
Street:

JESSICA ROAD

X-Street:  
OFFICIAL USE ONLY

JODY COURT

SWING TIES



REF: TIE SH. FOR TR 7850

( ) INDICATES REC. DIST PER. TIE SH. FOR TR 7850

△ DET P.K. NAIL + CITY TIE TAG ON T/C

- × FD. Ramset Nail on T/C
- FD. LD. & TK. on T/C
- FD. "C" Nail on T/C
- Set LD. & TK. on T/C

P.K. and City Engineer tag to be set @ surface after street construction is complete. (if possible)

Scale: 1" = 30'

Date: 07/01/02

Drawn by: SURVEY

F.B.:

TR-Sec: T3SR5W-10

## OFFICIAL TIE PLAT

### CITY OF RIVERSIDE



*These ties are for the purpose of perpetuating the found monumentation. No claim is made as to the relationship of the points or lines shown hereon to true boundary locations.*

Sheet 1 of 1  
Cadme MB: 69-3