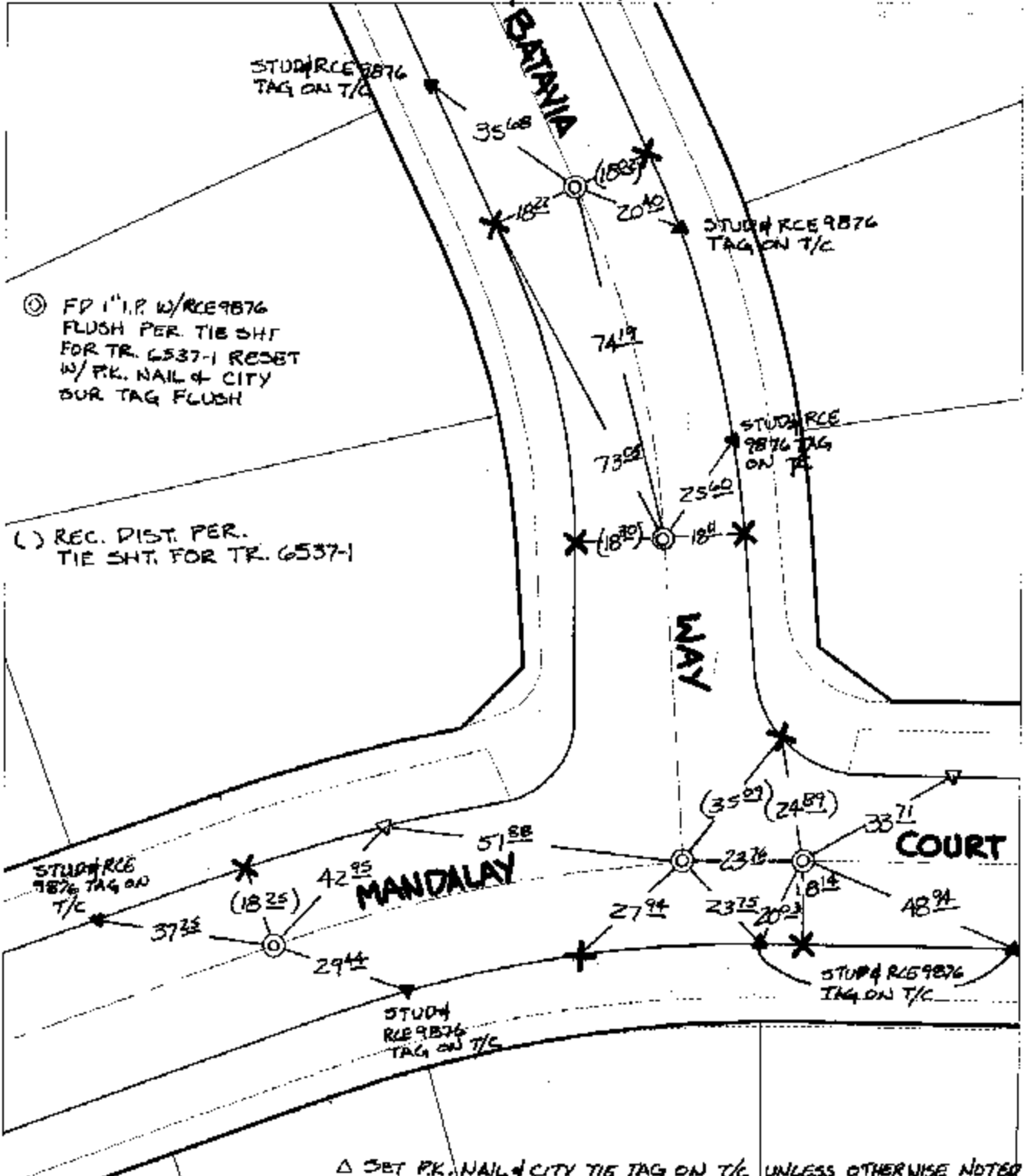


11974.TIF

Street: MANDALAY COURT X-Street: BATAVIA WAY
OFFICIAL USE ONLY

TRANSIT & SWING TIES



① FD 1" I.P. W/RCE 9876
FLUSH PER TIE SHI
FOR TR. 6537-1 RESET
W/PK. NAIL & CITY
SUR TAG FLUSH

() REC. DIST. PER.
TIE SHI. FOR TR. 6537-1

△ SET PK. NAIL & CITY TIE TAG ON T/C UNLESS OTHERWISE NOTED

- × FD. Ramset Nail on T/C
- FD. LD. & TK. on T/C
- Set LD. & TK. on T/C
- FD. "C" Nail on T/C
- P.K. and City Engineer tag to be set @ surface after street construction is complete. (if possible)

Scale: 1" = 30'
 Date: 08/20/02
 Drawn by: SURVEY
 F.B.:
 TR-Sec: T2SR6W-35

OFFICIAL TIE PLAT

CITY OF RIVERSIDE



These ties are for the purpose of perpetuating the found monumentation. No claim is made as to the relationship of the points or lines shown hereon to true boundary locations.

Sheet 1 of 1
 Cadme MB: 49-2