

11475.TIF

Street:

MANDALAY COURT

X-Street: OFFICIAL USE ONLY

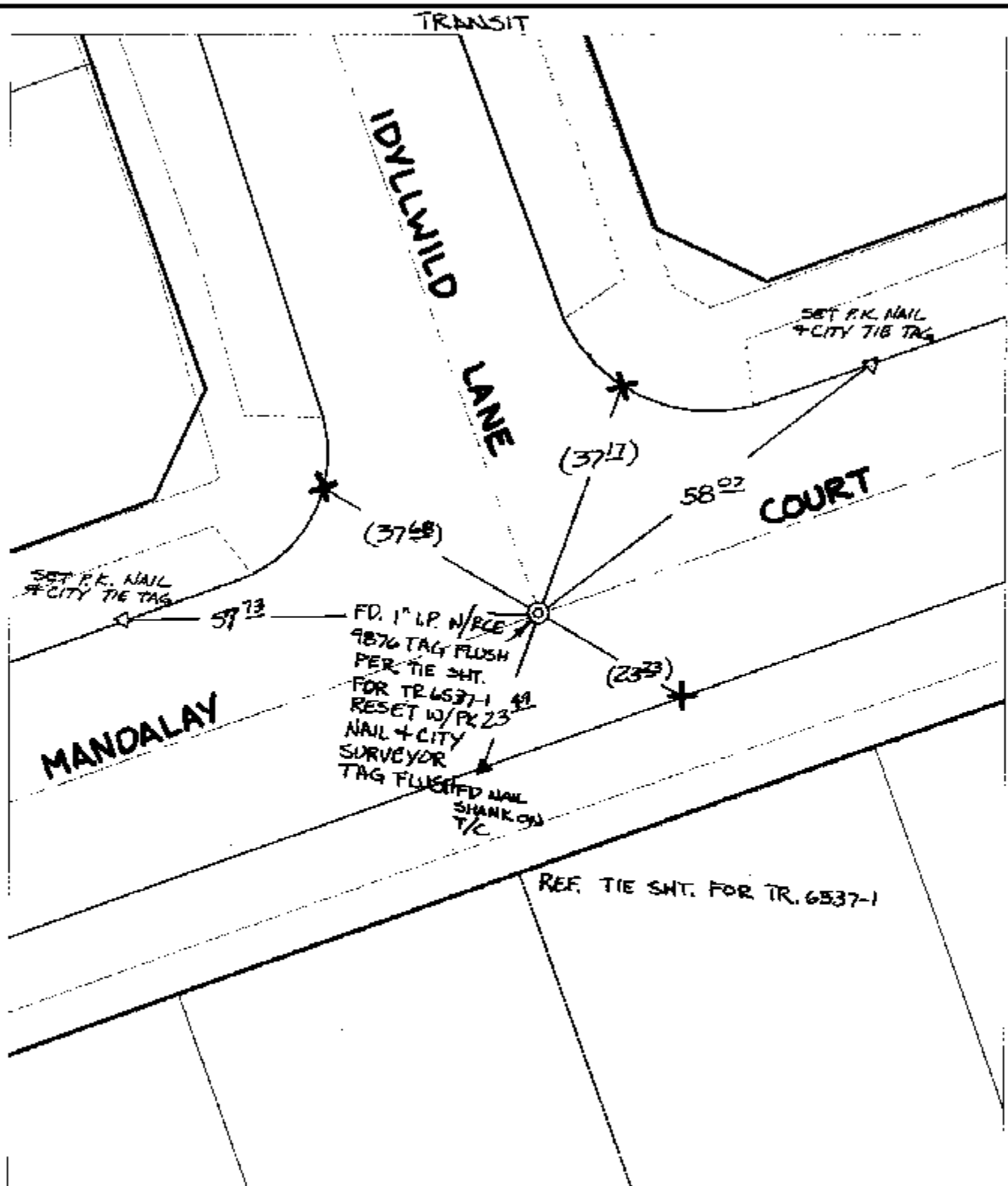
IDYLLWILD LANE

TRANSIT

IDYLLWILD LANE

COURT

MANDALAY



FD. 1" LP. N/PCE  
 98% TAG FLUSH  
 PER TIE SHT.  
 FOR TR. 6537-1  
 RESET W/PK 23  
 NAIL + CITY  
 SURVEYOR  
 TAG FLUSH  
 FD NAIL  
 SHANK ON  
 T/C

REF. TIE SHT. FOR TR. 6537-1

- ✕ FD. Ramset Nail on T/C      ● FD. LD. & TK. on T/C      P.K. and City Engineer tag to be set @ surface after street construction is complete. (if possible)
- FD. "C" Nail on T/C      ○ Set LD. & TK. on T/C

Scale: 1" = 20'  
 Date: 08/20/02  
 Drawn by: SURVEY  
 F.B.:  
 TR-Sec: T2SR6W-35

## OFFICIAL TIE PLAT

### CITY OF RIVERSIDE

*These ties are for the purpose of perpetuating the found monumentation. No claim is made as to the relationship of the points or lines shown hereon to true boundary locations.*



Sheet 1 of 1  
 Cadme MB: 49-2