

11476.TIF

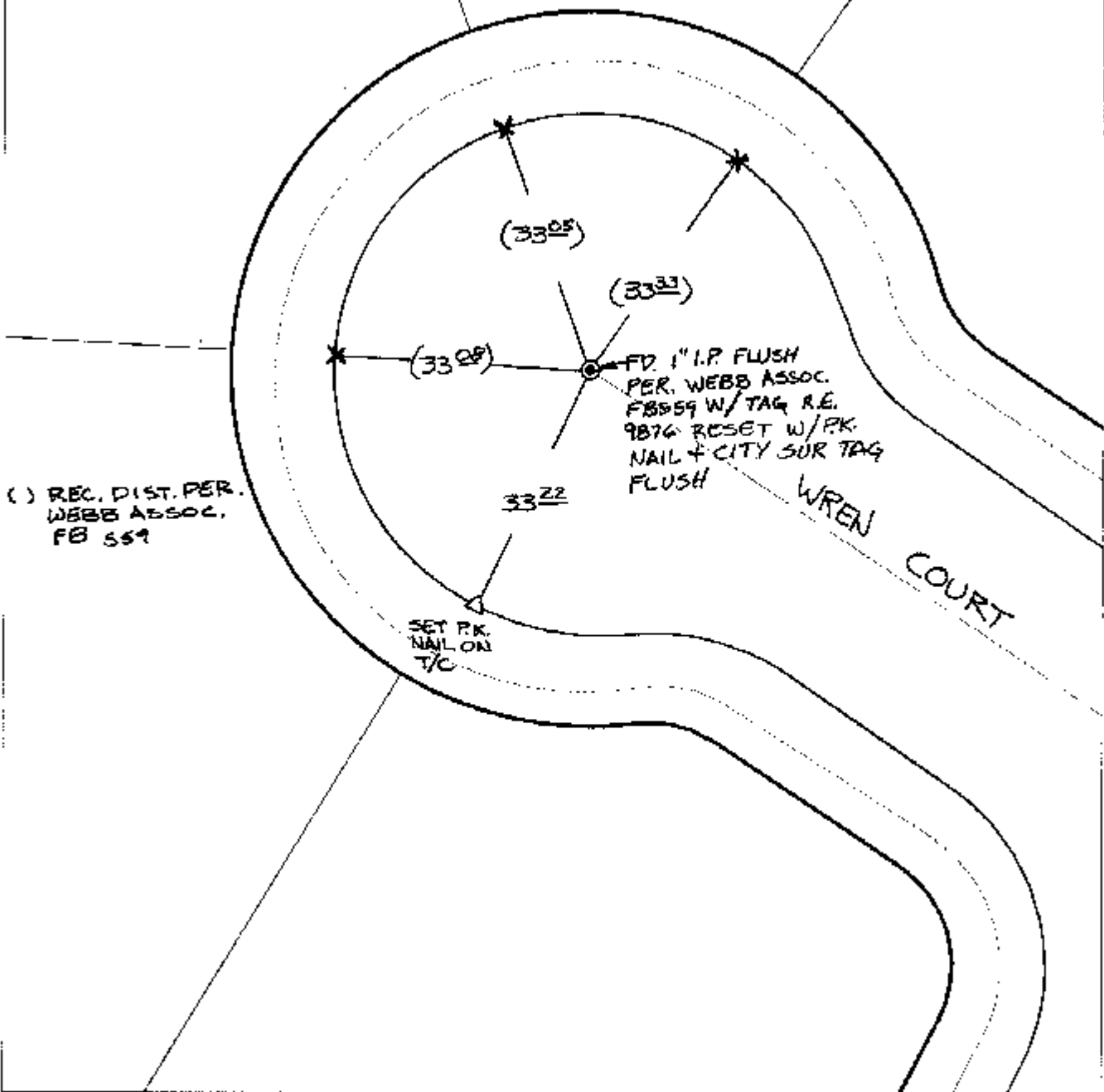
Street:

WREN COURT

X-Street:  
OFFICIAL USE ONLY

CUL-DE-SAC

HISTORICAL DATA  
WEBB ASSOC. FB 559



- ✕ FD. Ramset Nail on T/C
  - FD. LD. & TK. on T/C
  - FD. "C" Nail on T/C
  - Set LD. & TK. on T/C
- P.K. and City Engineer tag to be set @ surface after street construction is complete. (if possible)

Scale: 1" = 20'  
 Date: 06/28/02  
 Drawn by: SURVEY  
 F.B.:  
 TR-Sec: T2SR5W-32

## OFFICIAL TIE PLAT

### CITY OF RIVERSIDE

*These ties are for the purpose of perpetuating the found monumentation. No claim is made as to the relationship of the points or lines shown hereon to true boundary locations.*



Sheet 1 of 1  
 Cadme MB: 51-2