

Street:

GLEN VIEW AVENUE

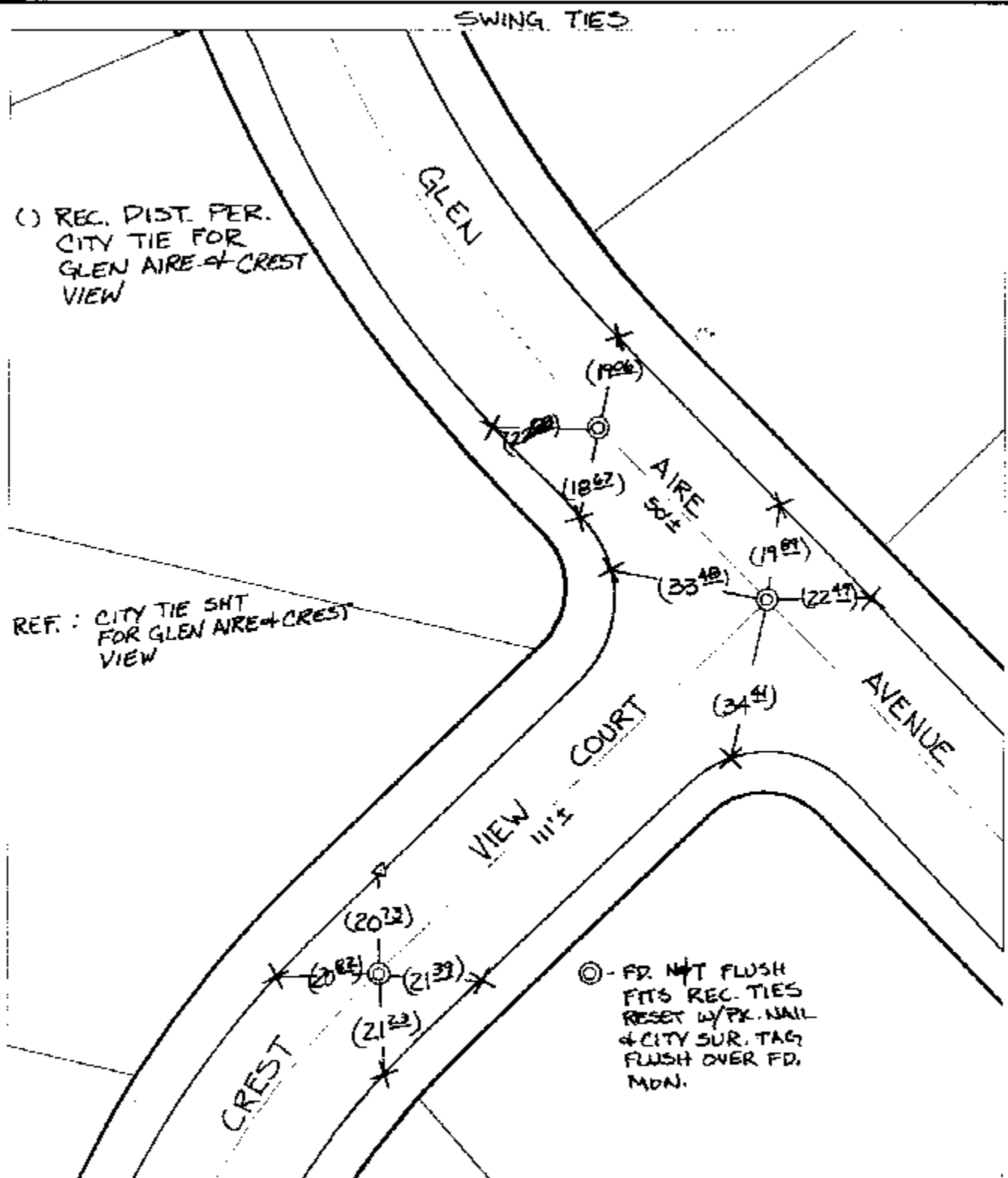
X-Street: OFFICIAL USE ONLY

CREST VIEW COURT

SWING TIES

() REC. DIST. PER. CITY TIE FOR GLEN AIRE + CREST VIEW

REF.: CITY TIE SHOT FOR GLEN AIRE + CREST VIEW



○ - FD. NOT FLUSH FITS REC. TIES RESET W/PK. NAIL + CITY SUR. TAG FLUSH OVER FD. MON.

- ✕ FD. Ramset Nail on T/C
- FD. LD. & TK. on T/C
- FD. "C" Nail on T/C
- Set LD. & TK. on T/C
- P.K. and City Engineer tag to be set @ surface after street construction is complete. (If possible)

Scale: 1" = 30'

Date: 07/10/02

Drawn by: Survey

F.B.:

TR-Sec: T3SR4W-6

OFFICIAL TIE PLAT

CITY OF RIVERSIDE



These ties are for the purpose of perpetuating the found monumentation. No claim is made as to the relationship of the points or lines shown hereon to true boundary locations.

Sheet 1 of 1
Cadme MB: 71-1