

Street:

WEST VIEW DRIVE

X-Street: OFFICIAL USE ONLY

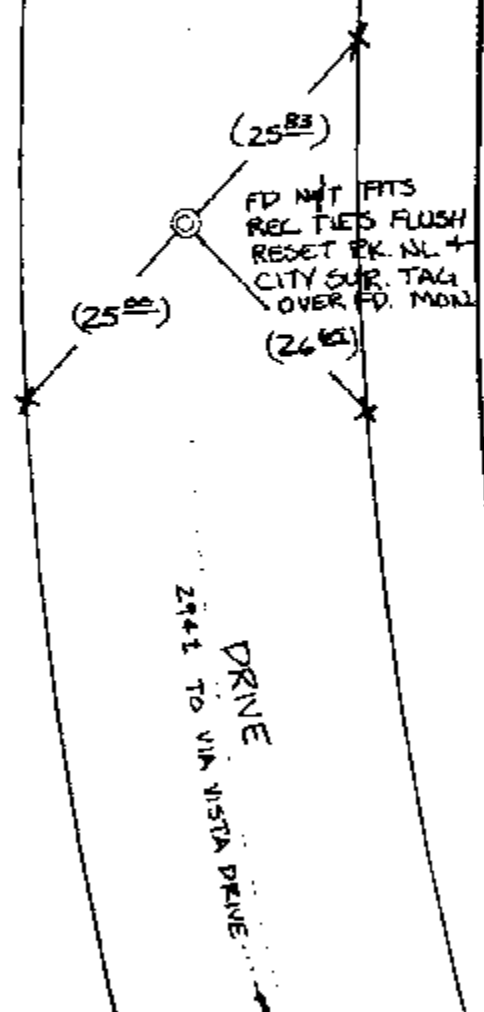
E.C. N. OF VIA VISTA

TRANSIT & SWING TIES

() - REC DIST. PER TIE SHT. FOR TR. 2121

REF. TIE SHT. FOR TR. 2121 MB 40/58-61

WEST VIEW



- ✕ FD. Ramset Nail on T/C
- FD. LD. & TK. on T/C
- FD. "C" Nail on T/C
- Set LD. & TK. on T/C

P.K. and City Engineer tag to be set @ surface after street construction is complete. (If possible)

Scale: 1" = 20'

Date: 07/22/02

Drawn by: Survey

F.B.:

TR-Sec: T3SR4W-6

OFFICIAL TIE PLAT

CITY OF RIVERSIDE

These ties are for the purpose of perpetuating the found monumentation. No claim is made as to the relationship of the points or lines shown hereon to true boundary locations.



Sheet 1 of 1

Cadme MB: 71-1