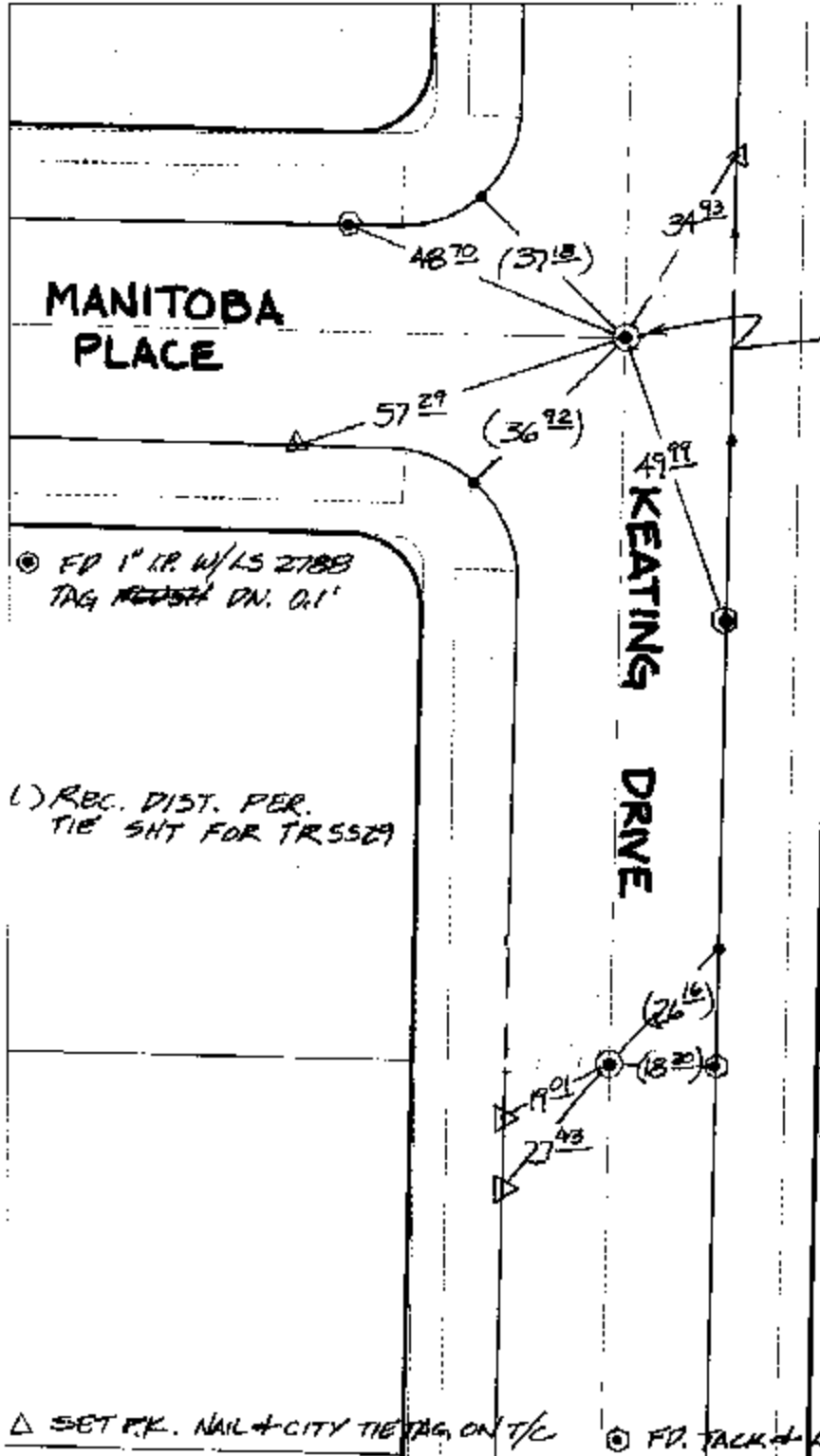


11487.TIE

Street: KEATING DRIVE X-Street: MANITOBA PLACE  
OFFICIAL USE ONLY



REF.: TIE SH. FOR TR5529

FD. 1" I.P. W/LS 2788  
TAG FLUSH RESET  
W/PK. NL + CITY SUR.  
TAG FLUSH

FD. 1" I.P. W/LS 2788  
TAG ~~RESET~~ DN. 0.1'

(1) REC. DIST. PER.  
TIE SH. FOR TR5529

FD. 1" I.P. W/LS 2788  
TAG ~~RESET~~ DN 0.1'

- △ SET P.K. NAIL + CITY TIE TAG ON T/C
  - FD. LD. & TK. on T/C
  - Set LD. & TK. on T/C
  - ⊗ FD. Ramset Nail on T/C
  - FD. "C" Nail on T/C
  - ⊙ FD. TACK + LS. 2788 TAG ON T/C
- P.K. and City Engineer tag to be set @ surface after street construction is complete. (if possible)

Scale: 1" = 30'

Date: 08/20/02

Drawn by: SURVEY

F.B.:

TR-Sec: T2SR6W-36

## OFFICIAL TIE PLAT

### CITY OF RIVERSIDE

*These ties are for the purpose of perpetuating the found monumentation. No claim is made as to the relationship of the points or lines shown hereon to true boundary locations.*



Sheet 1 of 1  
Cadme MB: 49-2