

Street:

BERKELEY ROAD

X-Street:  
OFFICIAL USE ONLY

B.C. & E.C.

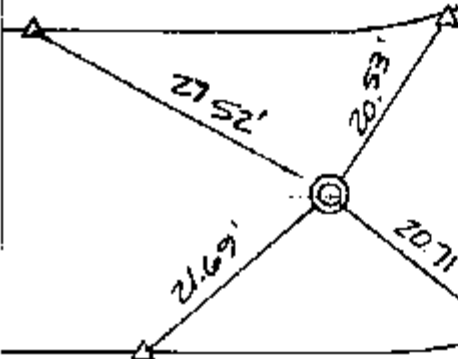
SWING TIES

FD NOTHING @ SURFACE

ROAD

BERKELEY R-95

FD SPIKE  
DN 0.16'  
RESET W/ PK NI  
+ CITY SUR TAG  
A FLUSH



- ✕ FD. Ramset Nail on T/C      ● FD. LD. & TK. on T/C      P.K. and City Engineer tag to be set @ surface after street construction is complete. (if possible)
- FD. "C" Nail on T/C      ○ Set LD. & TK. on T/C

Scale: 1" = 20'  
 Date: 01/30/03  
 Drawn by: SURVEY  
 F.B.:  
 TR-Sec: T2SR5W-35

## OFFICIAL TIE PLAT

### CITY OF RIVERSIDE



*These ties are for the purpose of perpetuating the found monumentation. No claim is made as to the relationship of the points or lines shown hereon to true boundary locations.*

Sheet 1 of 1  
Cadme MB: 54-2