

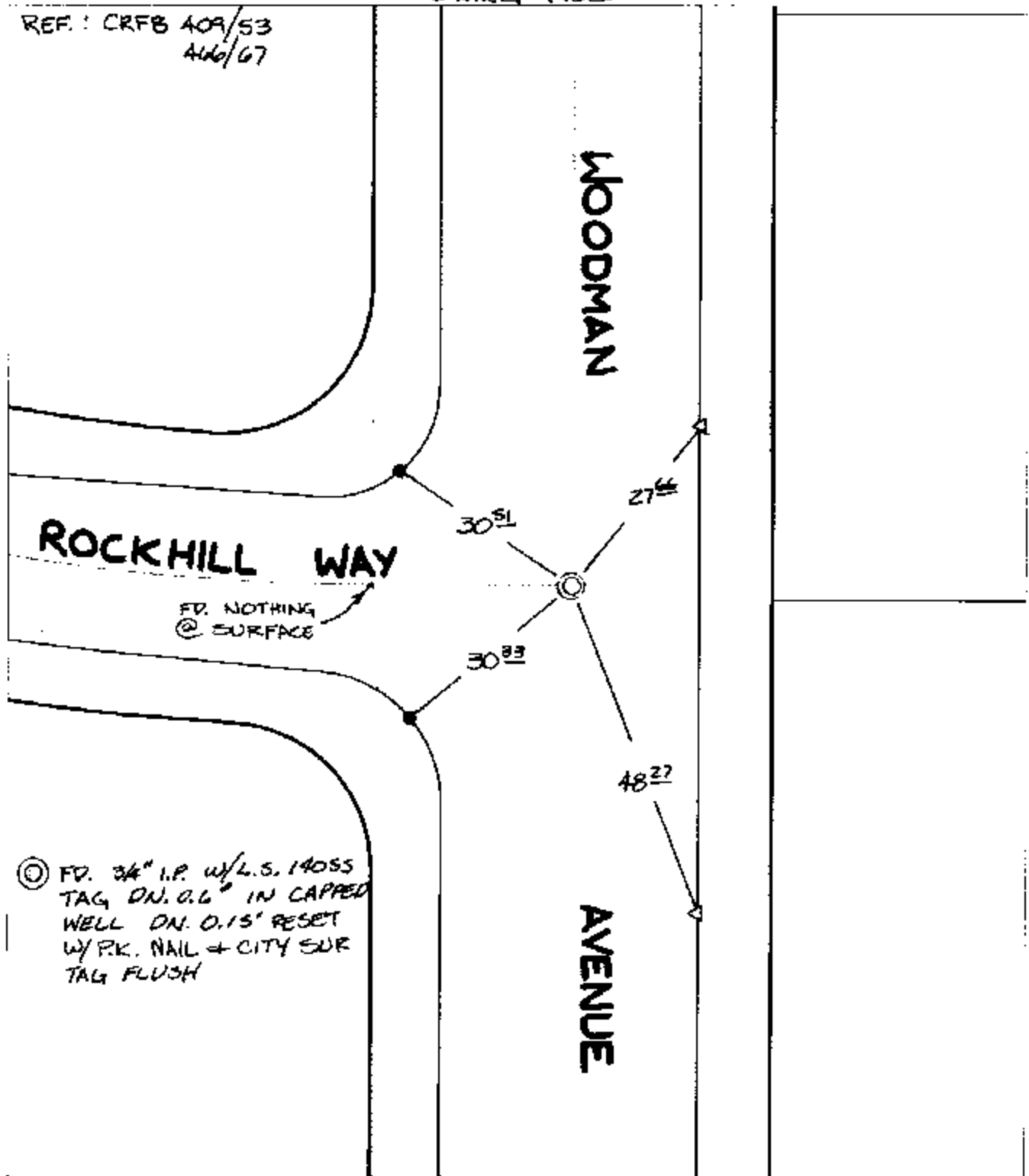
C 11792.T1E

Street: ROCKHILL WAY
X-Street: WOODMAN AVE
WOODMAN AVE

OFFICIAL USE ONLY

SWING TIES

REF: CRFB 409/53
4/6/67



⊙ FD. 3/4" I.P. w/L.S. 14055
TAG DN. 0.6" IN CAPPED
WELL DN. 0.15" RESET
W/P.K. NAIL + CITY SUR
TAG FLUSH

- ⊗ FD. Ramset Nail on T/C ● FD. LD. & TK. on T/C
- FD. "C" Nail on T/C ○ Set LD. & TK. on T/C

P.K. and City Engineer tag to be set @ surface after street construction is complete. (if possible)

Scale: 1" = 20'
 Date: 01/30/03
 Drawn by: SURVEY
 F.B.:
 TR-Sec: T2SR5W-35

OFFICIAL TIE PLAT

CITY OF RIVERSIDE



These ties are for the purpose of perpetuating the found monumentation. No claim is made as to the relationship of the points or lines shown hereon to true boundary locations.

Sheet 1 of 1
 Cadme MB: 39-8